

SWANA/KDHE

Solid Waste Management Conference & Operator Training



November 19-20, 2014
Hilton Garden Inn, Manhattan

Contact Information

Joe Cronin
SW Processing Unit
Solid Waste Permits Section
Bureau of Waste Management
Kansas Department of Health and Environment
Curtis State Office Building
1000 SW Jackson Street, Suite 320
Topeka, Kansas 66612

(W) 785-296-1667

(F) 785-296-1592

jcronin@kdheks.gov

SW Processing & Planning Unit

- Joe Cronin: SW Processors: TS, HHW, Compost.
Med waste, Beneficial Use
- Shelley Schupp: E-waste, Landfarms, Beneficial use
- Stacey Baalman: HHW, TS, DWOPs
- Jessica Willard: HHW Grants & Trng, Pharmaceuticals
- Ken Powell: Compost, Waste tires, Ag Bio-terrorism

Collection/Transfer Station Track

Operational Issues

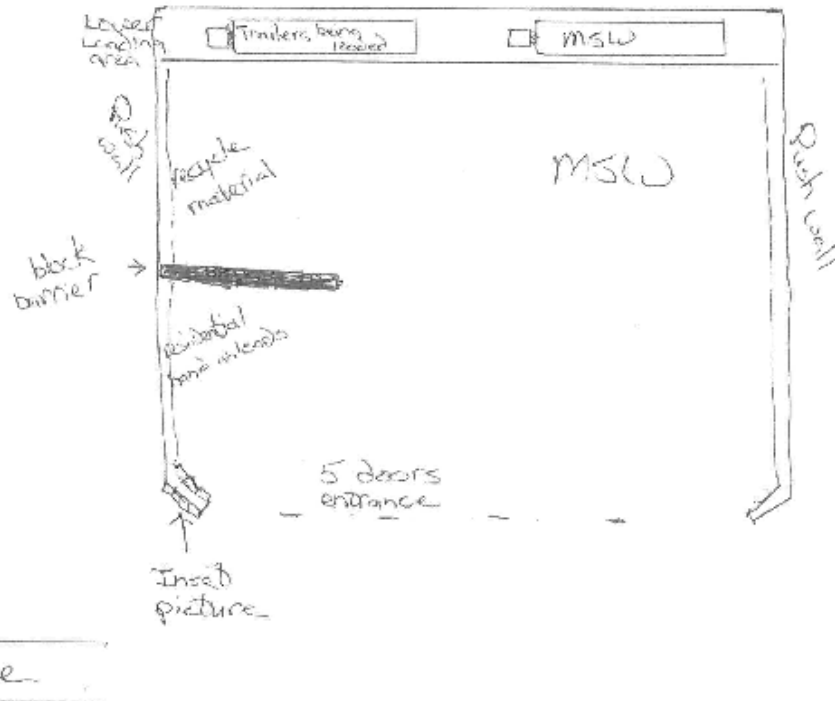
WC TS, SG Co



Our Mission: To protect and improve the health and environment of all Kansans

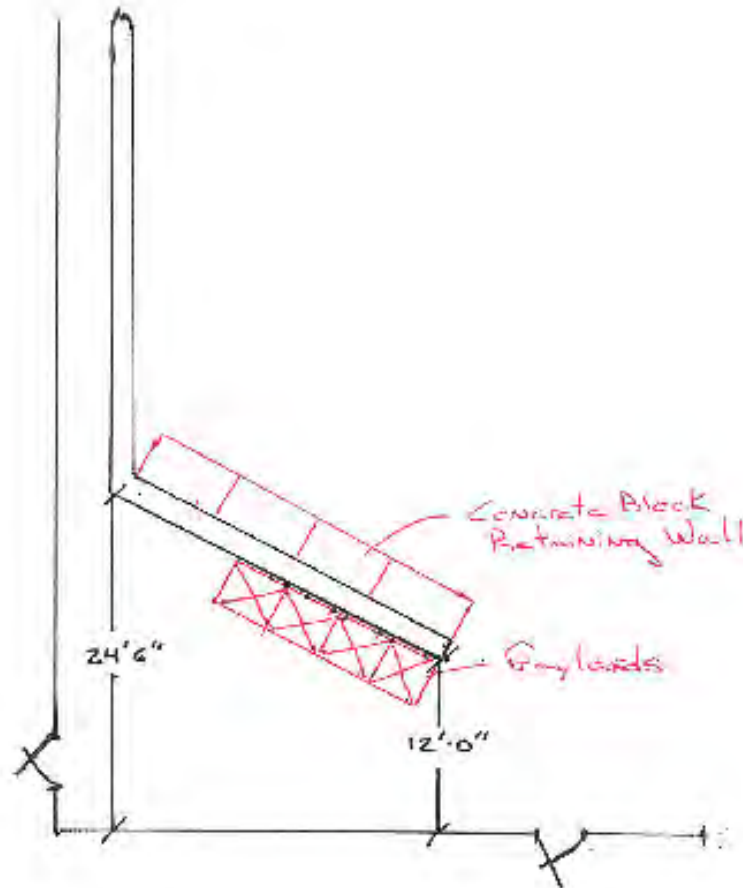
WC TS, SG Co

Tipping Floor Plan



WC TS, SG Co

Tipping Floor Plan





Our Mission: To protect and improve the health and environment of all Kansans



Our Mission: To protect and improve the health and environment of all Kansans



Our Mission: To protect and improve the health and environment of all Kansans



Our Mission: To protect and improve the health and environment of all Kansans



Our Mission: To protect and improve the health and environment of all Kansans



Our Mission: To protect and improve the health and environment of all Kansans

PT Co TS



Our Mission: To protect and improve the health and environment of all Kansans



Our Mission: To protect and improve the health and environment of all Kansans



Our Mission: To protect and improve the health and environment of all Kansans



Our Mission: To protect and improve the health and environment of all Kansans



Our Mission: To protect and improve the health and environment of all Kansans



Our Mission: To protect and improve the health and environment of all Kansans



Our Mission: To protect and improve the health and environment of all Kansans



Our Mission: To protect and improve the health and environment of all Kansans



Our Mission: To protect and improve the health and environment of all Kansans



Our Mission: To protect and improve the health and environment of all Kansans



Our Mission: To protect and improve the health and environment of all Kansans



Our Mission: To protect and improve the health and environment of all Kansans



10/29/2009

Our Mission: To protect and improve the health and environment of all Kansans





10/29/2009

Our Mission: To protect and improve the health and environment of all Kansans





Our Mission: To protect and improve the health and environment of all Kansans



Structure





Our Mission: To protect and improve the health and environment of all Kansans



Our Mission: To protect and improve the health and environment of all Kansans

Floor





Our Mission: To protect and improve the health and environment of all Kansans



Our Mission: To protect and improve the health and environment of all Kansans



Our Mission: To protect and improve the health and environment of all Kansans



Our Mission: To protect and improve the health and environment of all Kansans



Our Mission: To protect and improve the health and environment of all Kansans



Our Mission: To protect and improve the health and environment of all Kansans



Our Mission: To protect and improve the health and environment of all Kansans



Our Mission: To protect and improve the health and environment of all Kansans



Our Mission: To protect and improve the health and environment of all Kansans



Our Mission: To protect and improve the health and environment of all Kansans





Our Mission: To protect and improve the health and environment of all Kansans





Our Mission: To protect and improve the health and environment of all Kansans



Our Mission: To protect and improve the health and environment of all Kansans



Our Mission: To protect and improve the health and environment of all Kansans



Our Mission: To protect and improve the health and environment of all Kansans



Our Mission: To protect and improve the health and environment of all Kansans



Our Mission: To protect and improve the health and environment of all Kansans



Our Mission: To protect and improve the health and environment of all Kansans





Our Mission: To protect and improve the health and environment of all Kansans





Our Mission: To protect and improve the health and environment of all Kansans



Our Mission: To protect and improve the health and environment of all Kansans



Our Mission: To protect and improve the health and environment of all Kansans



Our Mission: To protect and improve the health and environment of all Kansans



Our Mission: To protect and improve the health and environment of all Kansans



Our Mission: To protect and improve the health and environment of all Kansans



Our Mission: To protect and improve the health and environment of all Kansans



Our Mission: To protect and improve the health and environment of all Kansans





Our Mission: To protect and improve the health and environment of all Kansans





Our Mission: To protect and improve the health and environment of all Kansans





Our Mission: To protect and improve the health and environment of all Kansans



Our Mission: To protect and improve the health and environment of all Kansans



Our Mission: To protect and improve the health and environment of all Kansans





Our Mission: To protect and improve the health and environment of all Kansans



Our Mission: To protect and improve the health and environment of all Kansans





Our Mission: To protect and improve the health and environment of all Kansans



Our Mission: To protect and improve the health and environment of all Kansans





Our Mission: To protect and improve the health and environment of all Kansans





Our Mission: To protect and improve the health and environment of all Kansans





Our Mission: To protect and improve the health and environment of all Kansans



Our Mission: To protect and improve the health and environment of all Kansans



Our Mission: To protect and improve the health and environment of all Kansans



WARNING
AVISO



Children can fall into
liquid and drown.
Keep children away from
liquid with even a small
amount of liquid.

Los niños pueden caer
a una cacer y ahogarse.
No deje que los niños se
acercen a una cacer aunque
sea con una pequeña
cantidad de agua.



CORROSIVE



CORROSIVE

MINI-MAX

27.64

No deja que los niños se
acerquen a este cubo aunque
sólo contenga una pequeña
cantidad de agua.



SL13 LABELMASTER

CHICAGO, IL 60646



SL13 LABELMASTER

CHICAGO, IL 60646





WARNING
AVISO



Flammable liquid
Highly flammable liquid
Extremely flammable liquid
Flammable solid
Highly flammable solid
Extremely flammable solid
Flammable gas
Highly flammable gas
Extremely flammable gas
Flammable aerosol
Highly flammable aerosol
Extremely flammable aerosol
Flammable dust
Highly flammable dust
Extremely flammable dust
Flammable liquid
Highly flammable liquid
Extremely flammable liquid
Flammable solid
Highly flammable solid
Extremely flammable solid
Flammable gas
Highly flammable gas
Extremely flammable gas
Flammable aerosol
Highly flammable aerosol
Extremely flammable aerosol
Flammable dust
Highly flammable dust
Extremely flammable dust

FLAMMABLE LIQUID

FLAMMABLE LIQUID

Printed by LABELMASTER, Div. of AMERICAN LABELMARK CO.

FLAMMABLE LIQUID

3

CHICAGO, IL 60646

LS

Printed by LABELMASTER, Div. of AMERICAN LABELMARK CO.

FLAMMABLE LIQUID

3

CHICAGO, IL 60646

LS





**HAZARDOUS
WASTE**

HANDLE WITH CARE!

HAZARDOUS WASTE

FEDERAL LAW PROHIBITS IMPROPER DISPOSAL
IF FOUND, CONTACT THE NEAREST POLICE, OR
PUBLIC SAFETY AUTHORITY, OR THE
U.S. ENVIRONMENTAL PROTECTION AGENCY

PROPER D.O.T.
SHIPPING NAME _____

GENERATOR INFORMATION
NAME _____

ADDRESS _____

CITY _____

STATE _____

ZIP _____

EPA
ID NO. _____

WASTE NO. _____

MANIFEST
DOCUMENT NO. _____

ACCUMULATION
START DATE _____

HANDLE WITH CARE!
CONTAINS HAZARDOUS OR TOXIC WASTES

STYLE 50046

PROPERTY LABEL MATTER: USE OF HAZARDOUS LABELING: C01

CHICAGO, IL 60646









IT'S
A GRENADE!

Special Waste

Special waste is defined by K.A.R 28-29-101(kk) as follows

- “Special Waste” means any solid waste that, due to physical, chemical or biological characteristics, may
 - (1) Present concerns regarding handling, owner or operator safety, management or disposal and
 - (2) Require special management standards

Special Waste

Common Special Wastes

- Non hazardous industrial/commercial waste streams
- Friable asbestos
- Untreated medical waste
- Petroleum contaminated soil

Spills

Leaks

UST Removals (not exempt)

Typical Special Wastes

Typical special waste include but are not limited to:

- Any industrial process waste
- Friable asbestos
- Contaminated soil
- Treated hazardous waste
- Old paint

Typical Special Wastes (cont)

- Paint filters
- Paint waste
- Waste chemicals (outdates or off spec)
- Waste sandblast media
- Medical (red bag) waste
- Sludges
- All drummed waste

Special Waste

K.A.R. 28-29-109

- Special waste disposal authorization
- Between generator and MSWLF
- Can include TS

Special Waste Transferred in CY 2012

Brown County Permit # 0104

<u>NE</u>	2012	2ND Quarter	6.47
	2012	4TH Quarter	13.00
	2012	3RD Quarter	6.00

35.47 Tons

transferred to 0394-S
N.R.Hamm LF

Special Waste Transferred in CY 2012

Ellis County Permit # 0113

<u>KS</u>	2012	4TH Quarter	8.20	0809-
	2012	1STQuarter	15.10	0809-
	2012	2ND Quarter	4.25	0809-
	2012	3RD Quarter	12.65	0809-

40.20 Tons

transferred to 0809-S
FinneyCo. LF

Special Waste Transferred in CY 2012

Marion County Permit # 0744

2012	2ND Quarter	0.39
------	-------------	-------------

0.39 Tons

transferred to 0100-S
ButlerCo. LF

Special Waste Transferred in CY 2012

Leavenworth County	Permit #	0755	
<u>KS</u>	2012	2ND Quarter	6.21
			6.21 Tons
<u>transferred to</u>	0342-S	Rolling Meadows LF	

Special Waste Transferred in CY 2012

McPherson Area Solid Waste	Permit #	0779	
2012	1S Quarter	339.78	0723-
2012	3RD Quarter	258.53	
2012	4TH Quarter	99.66	
2012	1S Quarter	110.90	0144-S
2012	3RD Quarter	86.69	
2012	4TH Quarter	106.34	
		1,001.90	Tons
<u>transferred to</u>	0723-S	Reno County LF	
	0144-S	City of Salina LF	

Special Waste Transferred in CY 2012**American Disposal Services of MO, Inc. Permit # 0710**

2012	3RD Quarter	26.22
2012	1ST Quarter	69.95
2012	2ND Quarter	56.72
2012	4TH Quarter	57.24

210.13 Tonstransferred to **Missouri****Special Waste Transferred in CY 2012****Harvey County Permit # 0812**

2012	1ST Quarter	24.37
2012	2ND Quarter	23.62
2012	3RD Quarter	28.82
2012	4TH Quarter	30.32

107.13 Tonstransferred to 0723-S Reno County LF**Special Waste Transferred in CY 2012****Mitchell
County Permit # 0129**

2012	1ST Quarter	6.77	KS
2012	2ND Quarter	6.61	
2012	3RD Quarter	8.62	

22.00 Tonstransferred to 0342-S Rolling Meadows LF

Customer Service Applause Now

Our Mission: To protect and improve the health and environment of all Kansans

