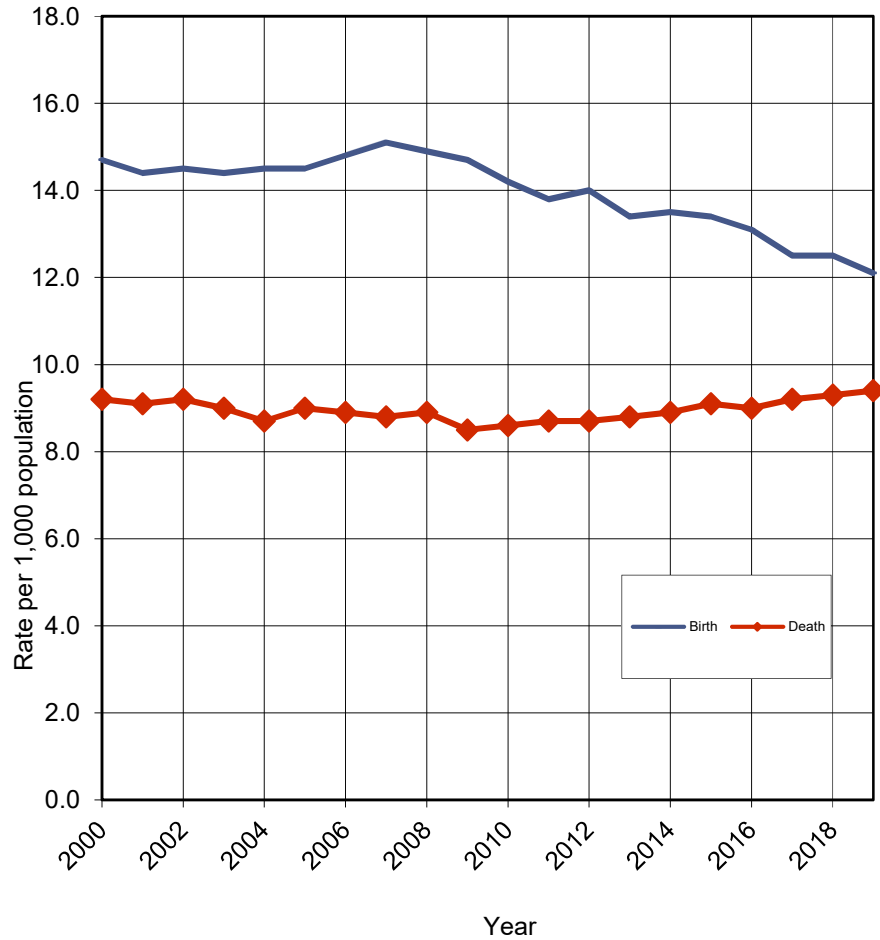
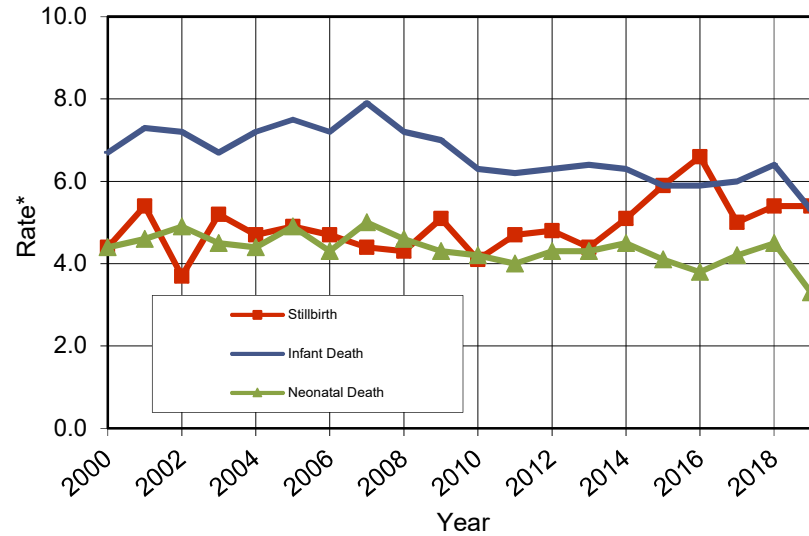


Selected Vital Event Rates  
Kansas, 2000-2019

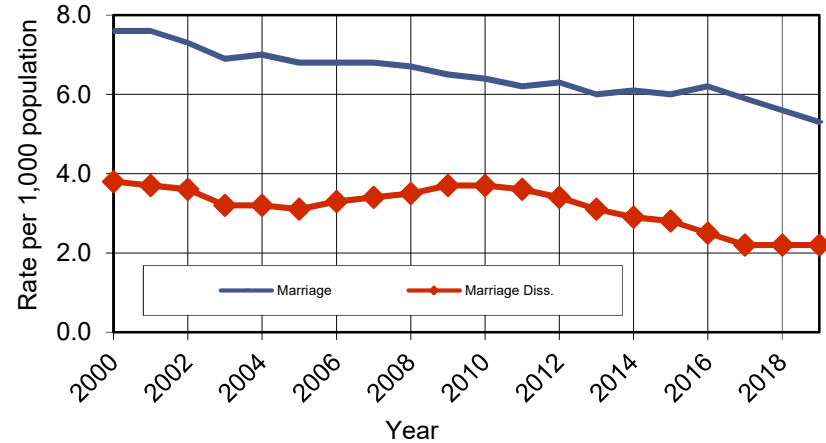
Birth and Death Rates  
Kansas, 2000-2019



Stillbirth\*, Infant, and Neonatal Death Rates  
Kansas, 2000-2019



Marriage and Marriage Dissolution Rates  
Kansas, 2000-2019



\* Stillbirth rates are per 1,000 Livebirths + Stillbirths;  
Infant death and Neonatal death rates are per 1,000 Livebirths.

Figure A3

