



# Population Health Webinar

April 23, 2019

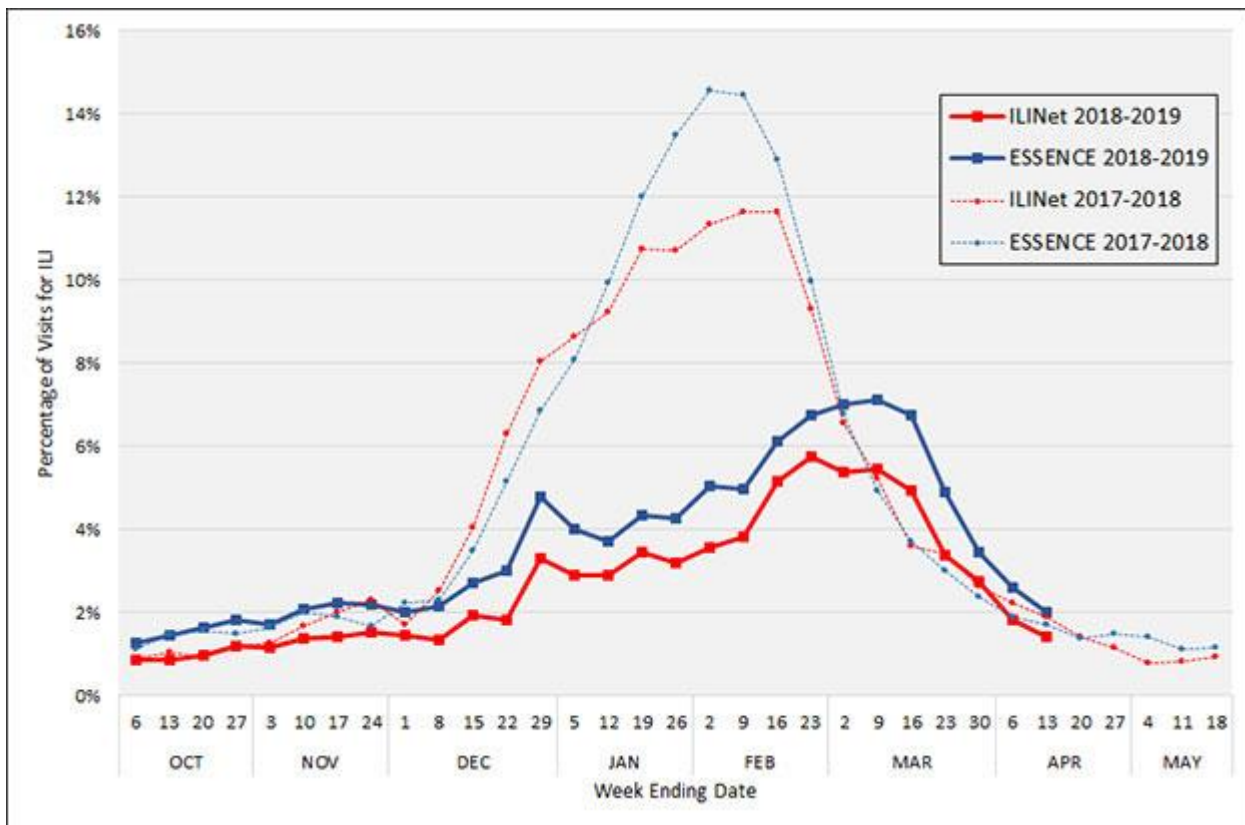


Department of Health  
and Environment  
*Division of Public Health*



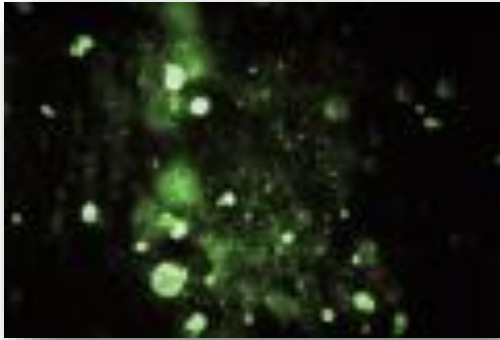
**Farah S. Ahmed, MPH, PhD**  
Bureau of Epidemiology and Public Health Informatics

# New Data and Reports: Influenza Surveillance



- A weekly report is available on the KDHE website at <http://www.kdheks.gov/flu/surveillance.htm>.
- Kansas is at local influenza activity.

# Rabies Investigation Update



CDC/ Rabies Virus



CDC / Rabid Dog

- Rabid dog from Egypt confirmed
- Strain is not found in the US but consistent with the circulating strain in Egypt
- Rabid dog was with a group of 26 dogs
- Remaining 25 dogs were returned to the shelter and are in quarantine
- All dogs are still healthy and none have developed signs of rabies



# Salmonella in Melons Multi-State Outbreak



Image courtesy of: Public Health Image Library <https://phil.cdc.gov>

<https://www.cdc.gov/salmonella/carrau-04-19/index.html>

- On April 12, the CDC and FDA announced a multistate outbreak linked to pre-cut melons supplied by Caito Foods, LLC.
- 93 cases from 9 states have been reported
- Caito Foods LLC recalled pre-cut watermelon, honeydew melon, cantaloupe, and pre-cut fruit medley products.
- Only one store in Kansas, the Leawood (Johnson County) Trader Joe's had received the implicated product.
- There are no known Kansas cases at this time.

# Public Health Alerts: Stem Cell Product Recall and Warning



USA News and World Report

- Liveyon stem cell product
- Recalled October 2018
- Multiple types of bacteria isolated from unopened vials
- Seven providers in Kansas treated patients with this product
- Notifications of patients is occurring

<https://www.fda.gov/Safety/Recalls/ucm623039.htm>

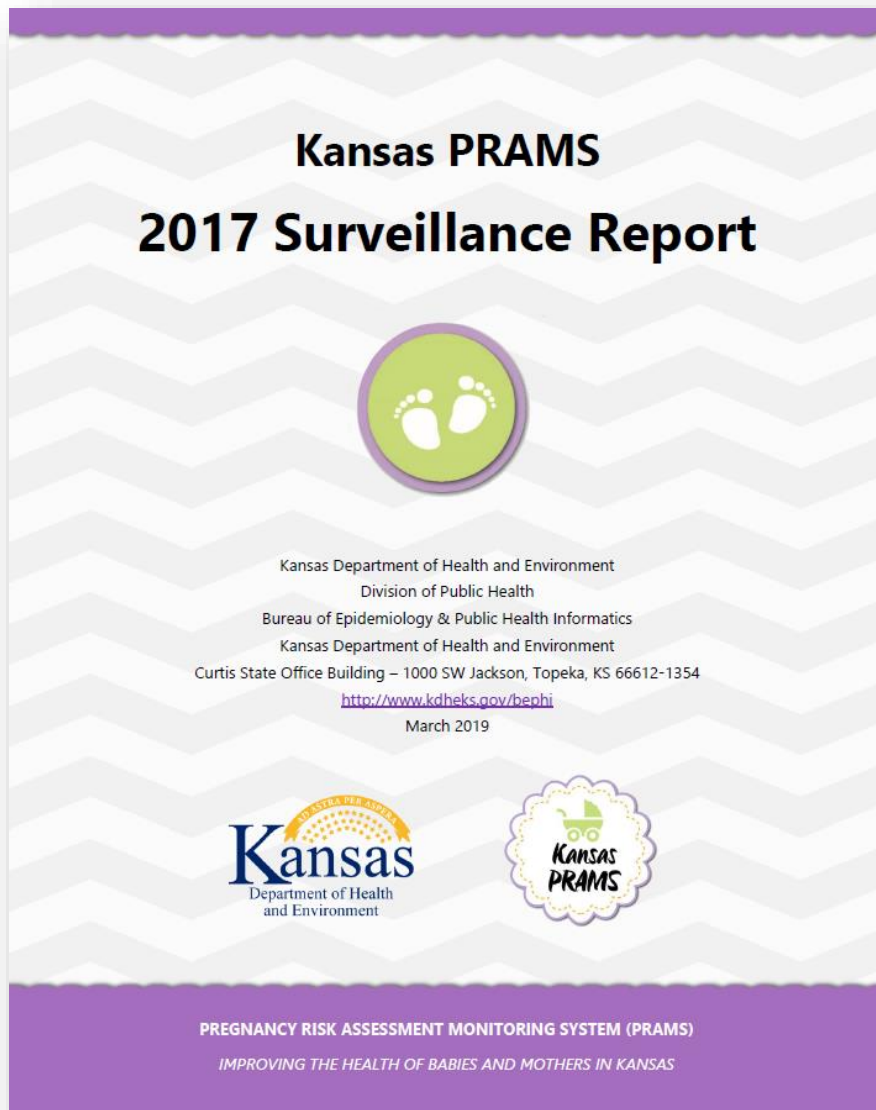
<https://www.cdc.gov/mmwr/volumes/67/wr/pdfs/mm6750a5-H.pdf>

# Public Health Alerts: Animal Rabies in Kansas



County	Bat	Cat	Dog	Sheep	Skunk	Total
Barton	0	0	0	0	2	<b>2</b>
Butler	0	0	0	0	1	<b>1</b>
Comanche	0	1	0	0	0	<b>1</b>
Ellsworth	0	0	0	1	0	<b>1</b>
Jefferson	0	0	0	0	1	<b>1</b>
Johnson	0	0	1	0	0	<b>1</b>
Marion	0	0	0	0	1	<b>1</b>
Saline	0	0	0	0	1	<b>1</b>
Scott	0	0	0	0	1	<b>1</b>
Sedgwick	1	0	0	0	1	<b>2</b>
Wichita	0	0	0	0	1	<b>1</b>
<b>Total</b>	<b>1</b>	<b>1</b>	<b>1</b>	<b>1</b>	<b>9</b>	<b>13</b>

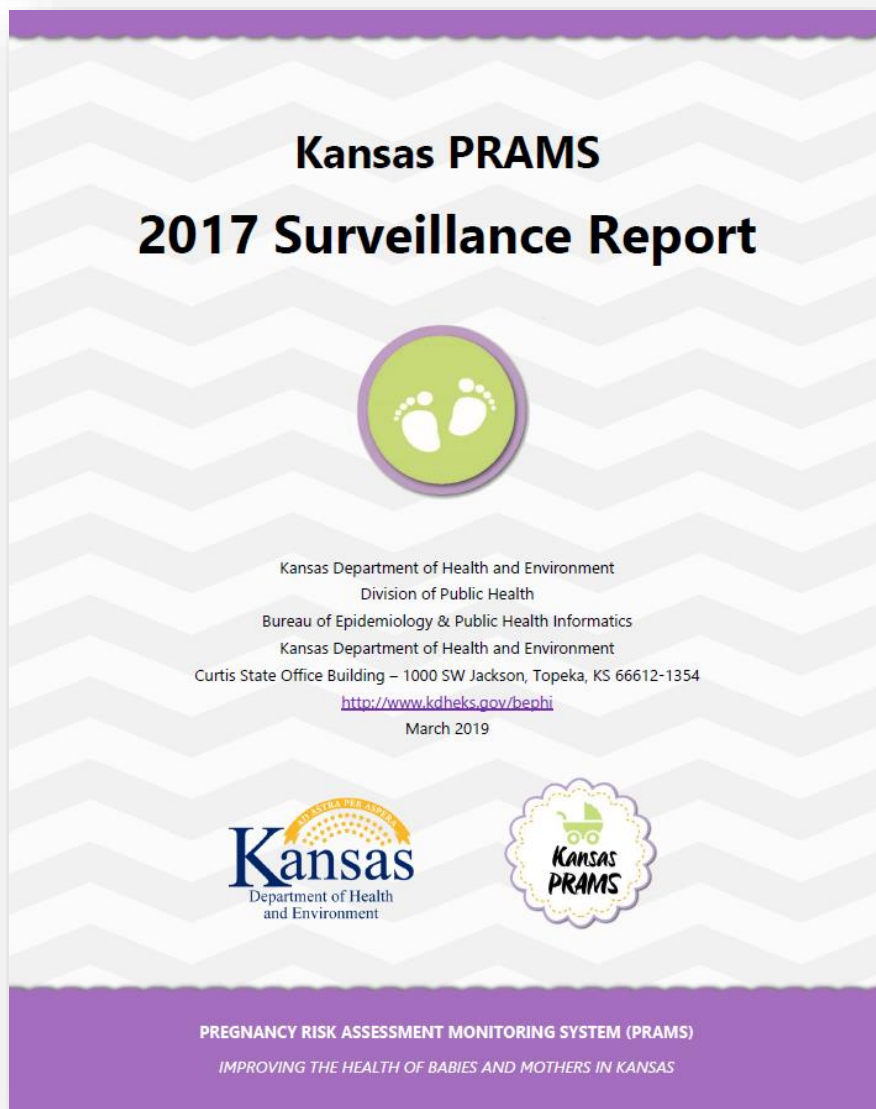
# New Data and Reports: PRAMS Report Issued



- Report covers the results of surveys of almost 1,000 women who had babies in 2017.
- Results include:
  - Two-thirds of mothers (67.0%) had a health care visit in the year before their pregnancy.
  - More than 4 in 5 mothers (85.7%) received prenatal care during the first trimester of pregnancy.
  - Almost 1 in 8 mothers (12.4%) exhibited signs of having depression in the 2 to 3 months after giving birth.
  - Nearly 3 in 4 mothers (72.6%) had experienced at least one stressful life event during the year before delivery.
  - Approximately 9 in 10 infants (90.1%) had been breastfed or fed breast milk, even if only for a short period of time.
  - Most mothers reported placing their infants to sleep on the infant's back most frequently (80.2%), versus on his/her side, stomach, or a combination of back, side, and/or stomach.



# New Data and Reports: PRAMS Report Issued



- Report available at:  
[http://www.kdheks.gov/prams/downloads/Kansas\\_PRAMS\\_2017\\_Surveillance\\_Report.pdf](http://www.kdheks.gov/prams/downloads/Kansas_PRAMS_2017_Surveillance_Report.pdf)
- Second year 2018 of Survey nearly complete
- Look for PRAMS Staff at the upcoming WIC Conference
- PRAMS Staff will also present at the KDHE local health department regional roundtable meetings beginning in October.

# Harmful Algal Bloom Season



- During summer months, people and animals will be at a higher risk to be exposed to harmful algal blooms (HABs).
- Public Health advisories related to HABs are available on the KDHE website at:  
<http://www.kdheks.gov/algae-illness/index.htm>
- Report to KDHE any suspected case of HAB-related illness or death in humans and animals. The reporting forms are available at:  
[http://www.kdheks.gov/algae-illness/reporting\\_incidents.htm](http://www.kdheks.gov/algae-illness/reporting_incidents.htm)

# Harmful Algal Bloom Season

Human Cases					
Year	Reported	Probable	Suspected	Confirmed	Total HAB-Likely
2015	4	1	0	0	1
2016	8	3	1	1	5
2017	8	5	0	0	5
2018	2	1	0	0	1
Total	22	10	1	1	12
Animal Cases					
Year	Reported	Probable	Suspected	Confirmed	Total HAB-Likely
2015	0	0	0	0	0
2016	9	0	0	0	0
2017	3	0	0	0	0
2018	1	1	0	0	1
Total	13	1	0	0	1



## Thank you/Questions

**Farah Ahmed, MPH, PhD**  
Environmental Health Officer & State  
Epidemiologist

[Farah.Ahmed@ks.gov](mailto:Farah.Ahmed@ks.gov)

(785) 296–6426



# Cristi Cain Local Public Health Program



- Thank you for attending the Governor's Public Health Conference. The next conference is March 31-April 2, 2020 in Wichita.
- Please type your favorite aspect of the conference in the chat/question box and/or an idea for next year!
- Don't forget to fill out the Kan Be Healthy survey!
- Regional meetings this quarter feature: Extreme Event Preparedness Game, Community Health Resources from WSU IMPACT Center: Support Group Services & KanCare Ombudsman Services, and EpiTrax: New and Improved





- Are you interested in having yourself or staff certified as Mental Health First Aid trainers? KDHE is hosting a 5 day training July 29-August 2 in Wichita. Let me know if you are interested.
- HRSA grant writing training—May 20 in Manhattan. Registration now open (link will be included in webinar notes).



## Thank you/Questions

**Cristi Cain**

Director, Local Public Health Program  
and Accreditation Coordinator

[Cristi.Cain@ks.gov](mailto:Cristi.Cain@ks.gov)

(785) 296–6549

# Tyson Rensch, MPH

## KansasTRAIN Updates



## 2019 KDEM G300 & G400 Training

- No current sessions scheduled but more information coming from KDEM soon!

## AWR-136: Essentials of Community Cybersecurity

- **Description:** provides individuals, community leaders, and first responders with information on how cyber-attacks can impact, prevent, and/or stop operations and emergency responses in a community.
- **Course ID= 1083364**
  - May 2<sup>nd</sup>, Hays – 3 seats available
  - June 18<sup>th</sup>, Wichita – 4 seats available
  - June 20<sup>th</sup>, Beloit – 25 seats available

## Additional Course Information

- **Sex Trafficking in Kansas: What you need to know (1081006)**
  - Now reviewed by the Attorney Generals office and available.
- **Preparedness Monthly Webinar (1079774)**
  - Scheduled for May 8<sup>th</sup> 10 am – 11 am



## Thank you/Questions

**Tyson Rensch, MPH**  
Kansas Train Administrator

[Tyson.Rensch@ks.gov](mailto:Tyson.Rensch@ks.gov) or  
[Kdhe.kstrain@ks.gov](mailto:Kdhe.kstrain@ks.gov)  
(785) 296–1190

**Philip Harris, MA, CHES®**  
**Bureau of Health Promotion**

## Staff Update

- Jeff Wilhelm is the new Kansas Violent Death Reporting Coordinator



## Staff Update

- Meredith Slan is the new Diabetes Public Health Educator

## Staff Updates

- Ann Elifrits is the new Section Director
- Julie Sergeant is the new Population Health Strategies Director
- Kelly Nightengale is the new Community Health Worker Coordinator
- Tarrah McMillian is the new NE EDW Regional Nurse

## UPCOMING WEBINAR

**12-1 p.m., Monday, May 20**

### **Tobacco Free Parks: Pursuing Healthy Spaces for Healthy Communities**

To help local communities and organizations develop and implement policies for tobacco-free parks and other outdoor areas, the **Kansas Department of Health Environment's Tobacco Use Prevention Program** will be holding a webinar covering the impact of strong policies and using the **Young Lungs at Play! Toolkit**.

To register, visit [www.kdheks.gov/tobacco](http://www.kdheks.gov/tobacco).





## Thank you/Questions

**Philip Harris, MA, CHES®**  
**BHP Communications Coordinator**

[Philip.Harris@ks.gov](mailto:Philip.Harris@ks.gov)

**(785) 296–2923**