

An aerial photograph showing a train wreck in a rural area. The train cars are derailed and crushed, with a large plume of white smoke rising from the wreckage. The surrounding landscape is dry and grassy.

The Butler County Train Wreck January 12, 2008

**Linda Johnson, E-Waste Coordinator
Dianne Rollins, Solid Waste Coordinator**

**Butler County Public Works
El Dorado, Kansas**

Initial Evaluation

- **Contactors for BNSF contacted the landfill immediately regarding disposal.**
- **It was determined that much of the debris was organic and could be composted.**



Time Was Of The Essence

- We were informed that BNSF was losing \$1 million an hour while the tracks were closed.



The debris needed to be removed as quickly as possible to reopen the tracks.



KDHE Response

- KDHE was contacted for guidance on redirecting the waste.
- Ken Powell arrived the next morning to evaluate the situation.
- Recommendations were made on a compost site location and laboratory testing.

Location, Location, Location

- It was determined that the best area for composting was a future expansion site for the C&D landfill.
- The area was already designed with ditches for run-off directed to a sedimentation pond and a constructed wetland before entering a creek.

Equipment Needs

- With the large quantity of material involved we discussed the need for a screen or turner.
- We decided a screen would be most valuable with the amount of contaminants from the train wreck

Equipment Issues

- We obtained a used screen with a rent to buy option.
- There were lots of maintenance issues and then it began to rain.
- Before the rain stopped the unit was sold.

More Equipment Issues

- We eventually located another screen that could be left on site.
- Rental rate for the screen is \$110/hour
- So far it has been used 41 hours for a cost of \$4510.

The Screening Plant

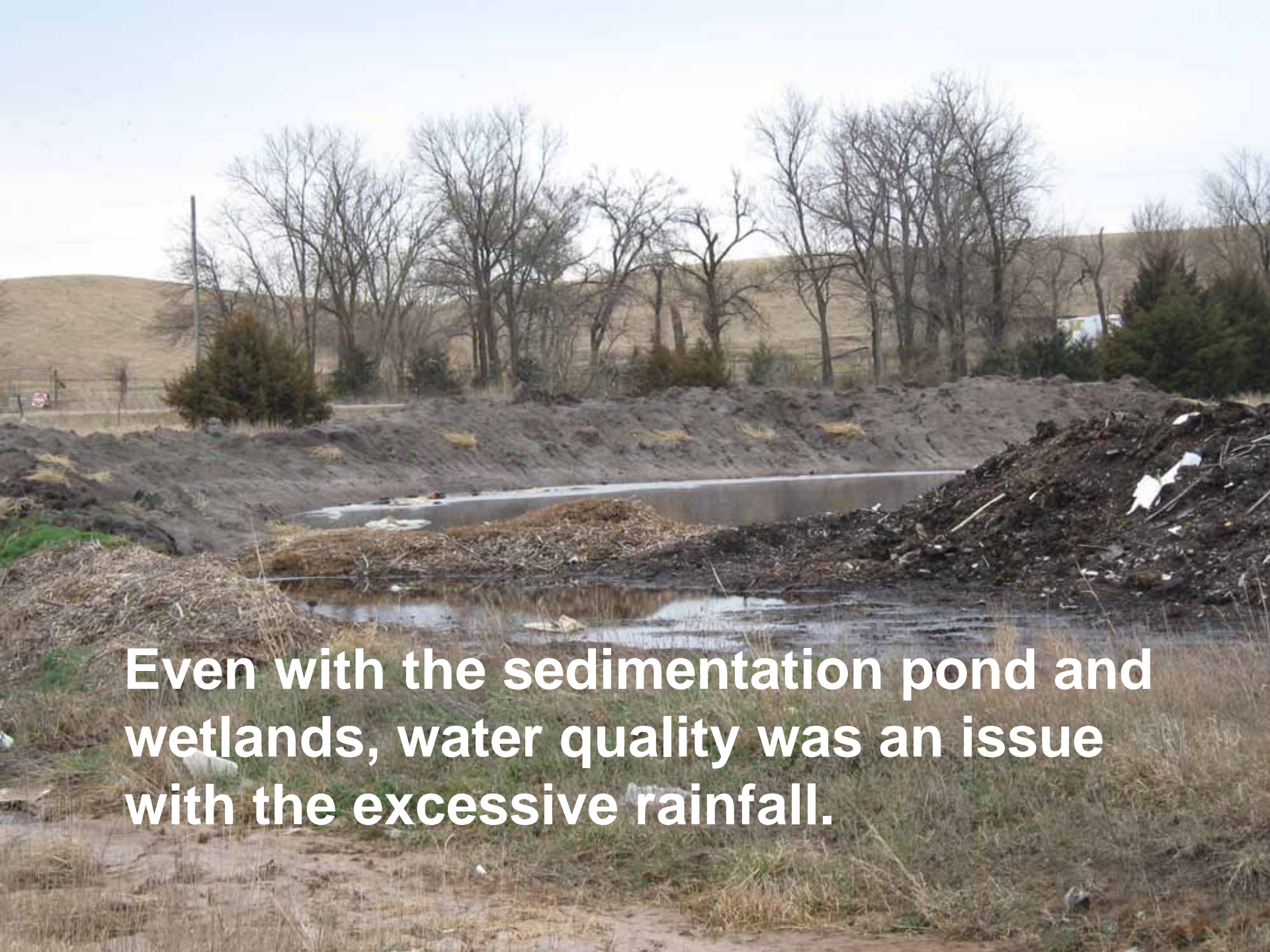


Forces Of Nature

- **Our average rainfall here is less than 30" per year. Last year we received over 50".**

- **Wet conditions impeded screening and turning operations all year long.**





Even with the sedimentation pond and wetlands, water quality was an issue with the excessive rainfall.

Total Waste Received – 6,467 Tons

4,122 tons of distillers grain, fruit and other organics were composted.

2,272 tons went to the MSW landfill.


44 tons of trees went to wood waste.

29 tons of RR ties went to the C&D.

The Good

- Revenue from composting diverted material was \$123,660 and saved landfill space.
- KDHE cooperation and assistance was outstanding.

The Bad

- The yearlong heavy rainfall caused water quality issues.
 - Wet conditions did not allow us to work the compost as needed so odors were an issue.
- 
- A photograph showing a large, dark, conical pile of compost in a rural, overcast setting. The ground is muddy and wet, with several puddles reflecting the grey sky. In the background, there are several bare, leafless trees and rolling hills under a heavy, grey sky. To the right of the main compost pile, there is a smaller, more chaotic pile of what appears to be waste or debris.

Train Derailment





















Special Thanks To...

- **KDHE**
- **BNSF**
- **Butler County**
- **Young Construction**