

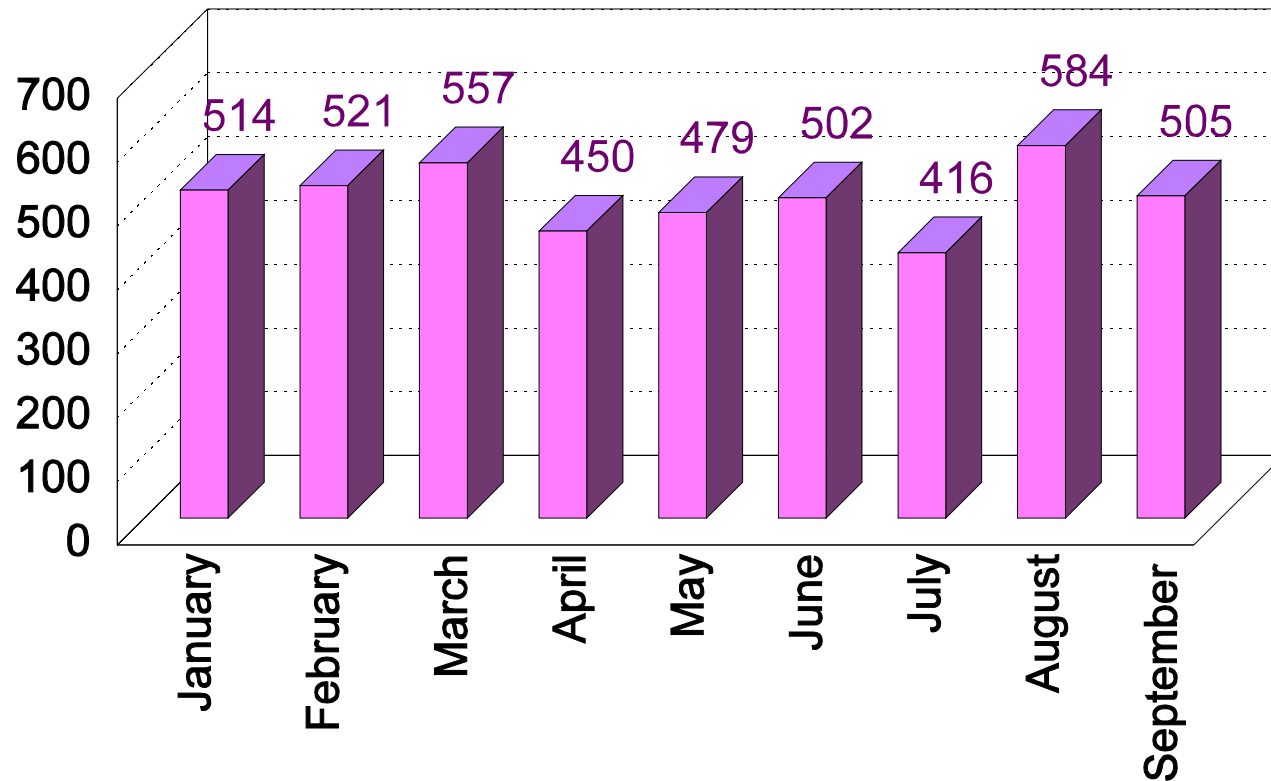
**KANSAS DEPARTMENT OF HEALTH AND ENVIRONMENT
BUREAU OF EPIDEMIOLOGY AND DISEASE PREVENTION
SEXUALLY TRANSMITTED DISEASE PROGRAM**

TABLE OF CONTENTS

JANUARY - SEPTEMBER, 2000

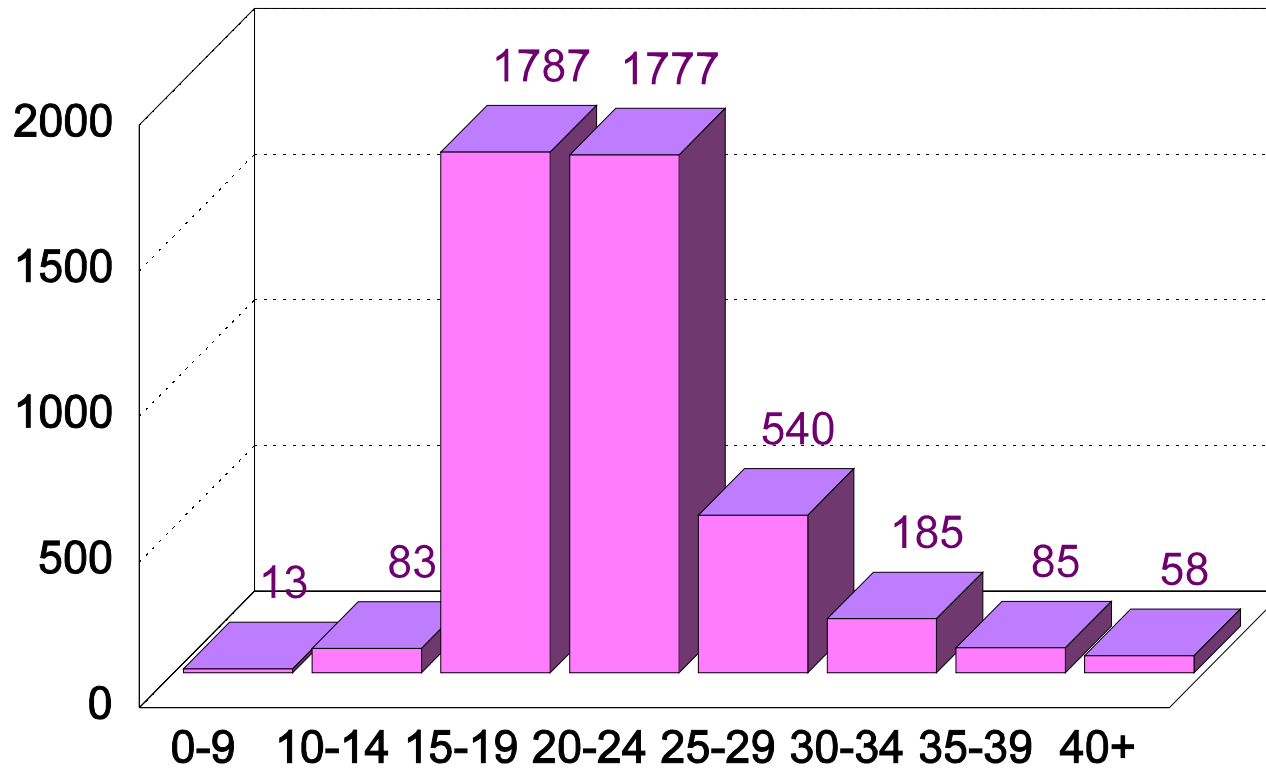
1.....	Reported Cases of Chlamydia by Month
2.....	Reported Cases of Chlamydia by Age
3.....	Reported Cases of Chlamydia by Race
4.....	Reported Cases of Chlamydia by Sex
5.....	Reported Cases of Chlamydia by County
6.....	Reported Cases of Gonorrhea by Month
7.....	Reported Cases of Gonorrhea by Age
8.....	Reported Cases of Gonorrhea by Race
9.....	Reported Cases of Gonorrhea by Sex
10.....	Reported Cases of Gonorrhea by County
11.....	Reported Cases of Early Syphilis by Month
12.....	Reported Cases of Early Syphilis by Age
13.....	Reported Cases of Early Syphilis by Race
14.....	Reported Cases of Early Syphilis by Sex
15.....	Reported Cases of Primary and Secondary Syphilis by County
16.....	Reported Cases of Early Latent Syphilis by County
17.....	Reported Cases of Early Syphilis by County

State of Kansas Reported Cases of Chlamydia by Month January - September 2000



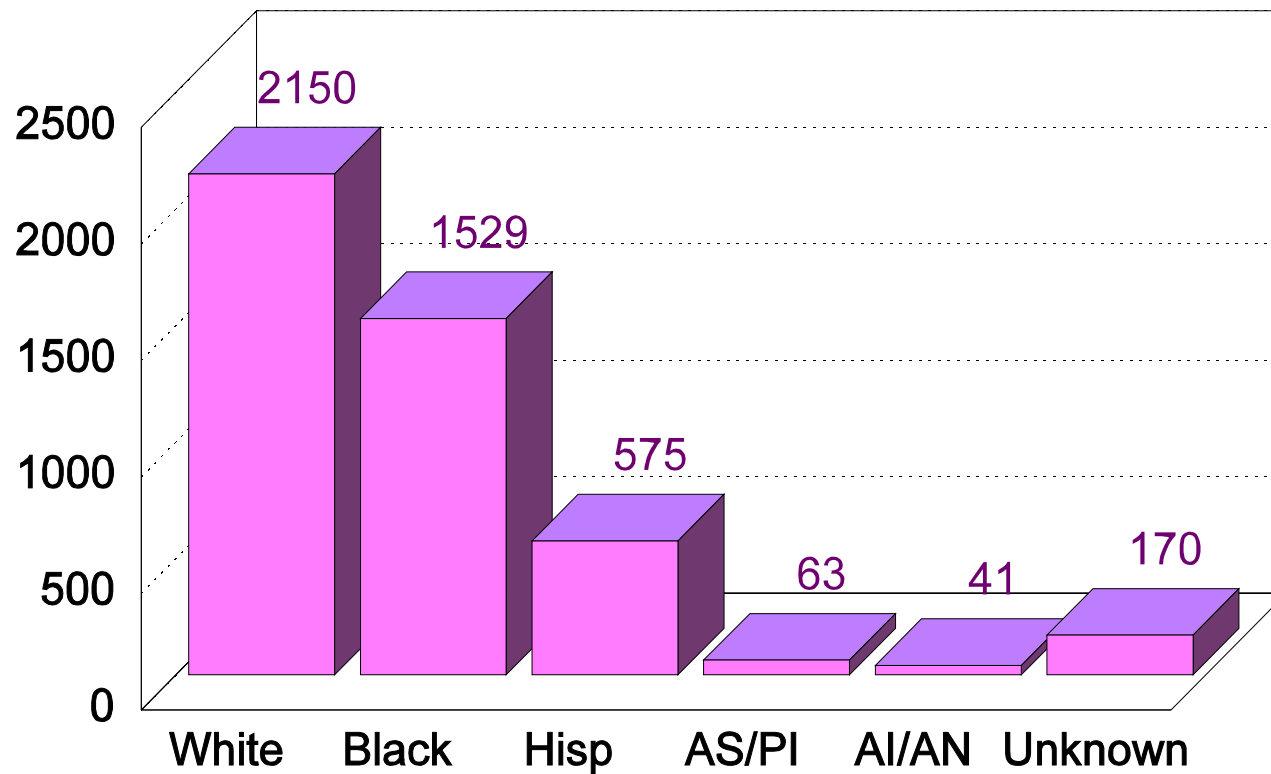
Total 4528

State of Kansas Reported Cases of Chlamydia by Age January - September 2000



Total 4528

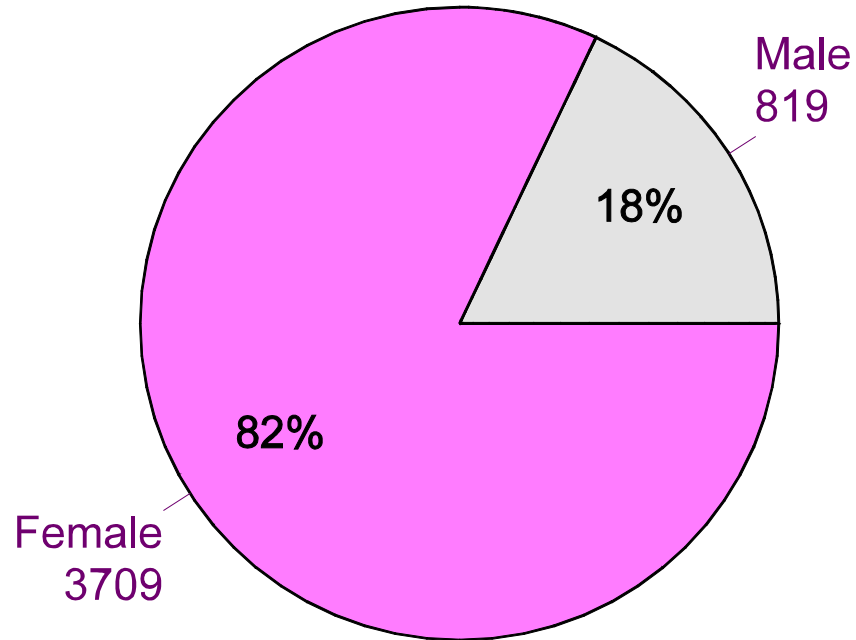
State of Kansas Reported Cases of Chlamydia by Race January - September 2000



Total 4528

State of Kansas Reported Cases of Chlamydia by Sex

January - September 2000



Total 4528

State of Kansas

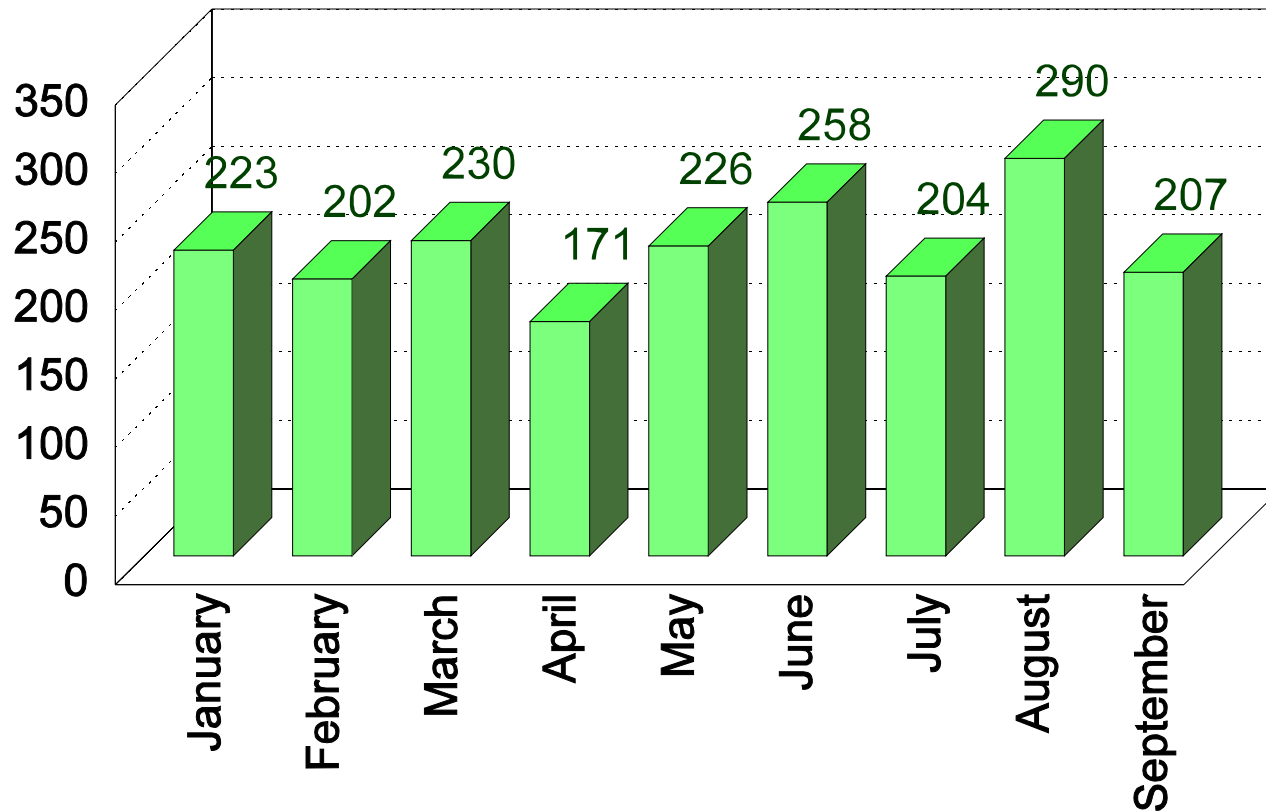
Reported Cases of Chlamydia by County

January - September 2000

CHEYENNE	RAWLINS	DECATUR	NORTON	PHILLIPS	SMITH	JEWELL	REPUBLIC	WASHINGTON	MARSHALL	NEMAHA	BROWN	DONIPHAN
2			2	1	1		2	1	4	7	9	9
SHERMAN	THOMAS	SHERIDAN	GRAHAM	ROOKS	OSBORNE	MITCHELL	CLOUD	CLAY	POTTAWATOMIE	JACKSON	ATCHISON	JEFFERSON
4	6	1		7	3	6	6	3	12	13	18	7
WALLACE	LOGAN	GOVE	TREGO	ELLIS	RUSSELL	LINCOLN	OTTAWA	DICKINSON	RILEY	SHAWNEE	LEAVENWORTH	WYANDOTTE
2			6	55	1	1	1	21	133	389	88	790
GREELEY	WICHITA	SCOTT	LANE	NESS	RUSH	BARTON	SALINE	MCPHERSON	GEARY	WABAUNSEE	JOHNSON	MIAMI
5	1	1				40	85	16	194	2	315	16
HAMILTON	KEARNEY	FINNEY	HODGEMAN	PAWNEE	STAFFORD	RENO	ELLSWORTH	MARION	MORRIS	LYON	OSAGE	DOUGLAS
5	7	104		4	2	85	1	9	6	68	11	198
STANTON	GRANT	HASKELL	GRAY	EDWARDS	FORD	HARVEY	RICE	MCPHERSON	CHASE	COFFEY	FRANKLIN	MIAMI
4	18		2		73	42	6	16	4	7	32	16
MORTON	STEVENS	SEWARD	MEADE	CLARK	KIOWA	PRATT	PAWNEE	MCPHERSON	BUTLER	GREENWOOD	ANDERSON	LINN
3	6	30	5		1	8	4	16	54	3	1	8
				COMANCHE	BARBER	HARPER	RENO	MCPHERSON	GREENWOOD	WOODSON	ALLEN	BOURBON
						7	85	16	3	1	12	18
							KINGMAN	MCPHERSON	SEDGWICK	WILSON	NEOSHO	CRAWFORD
							3	16	1163	9	11	70
							BARBER	MCPHERSON	SUMNER	ELK	LINN	CHEROKEE
								7	23	1	8	10
									COWLEY	CHAUTAQUA	MONTGOMERY	LABELLE
									45		34	28

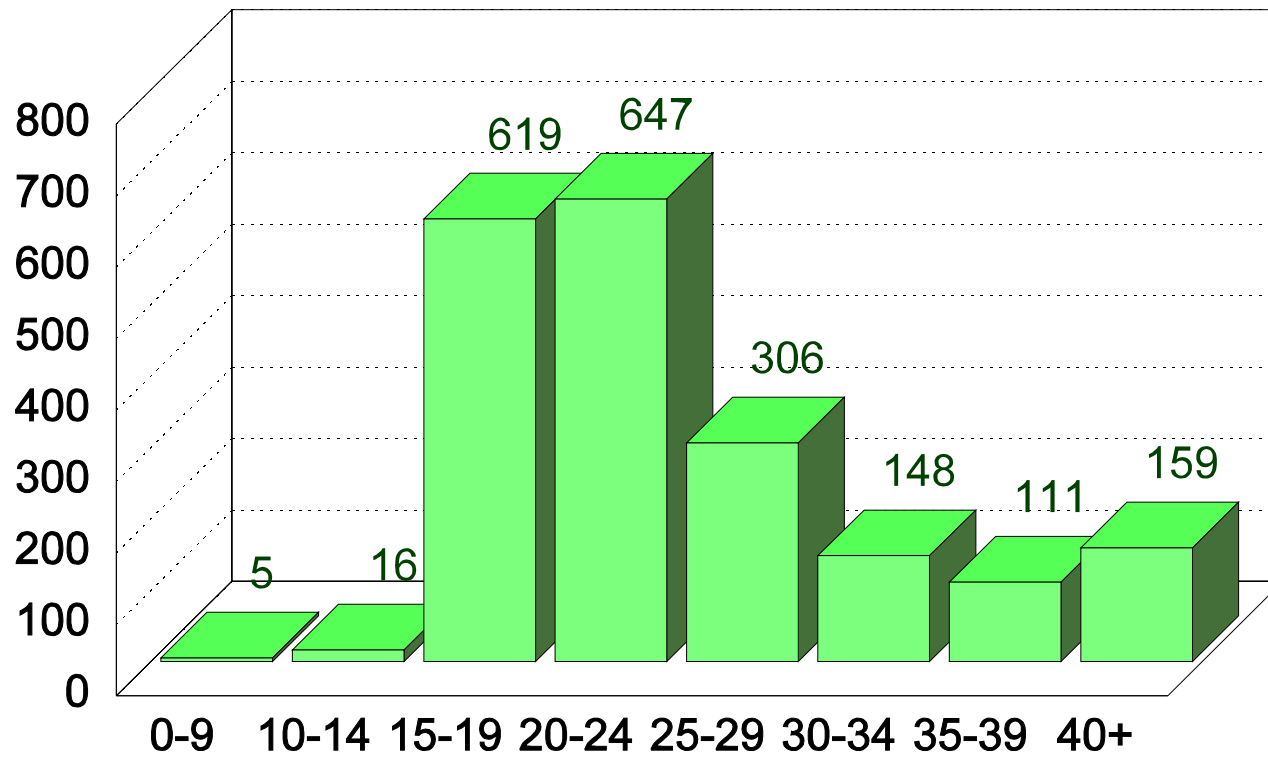
Total 4528

State of Kansas Reported Cases of Gonorrhea by Month January - September 2000



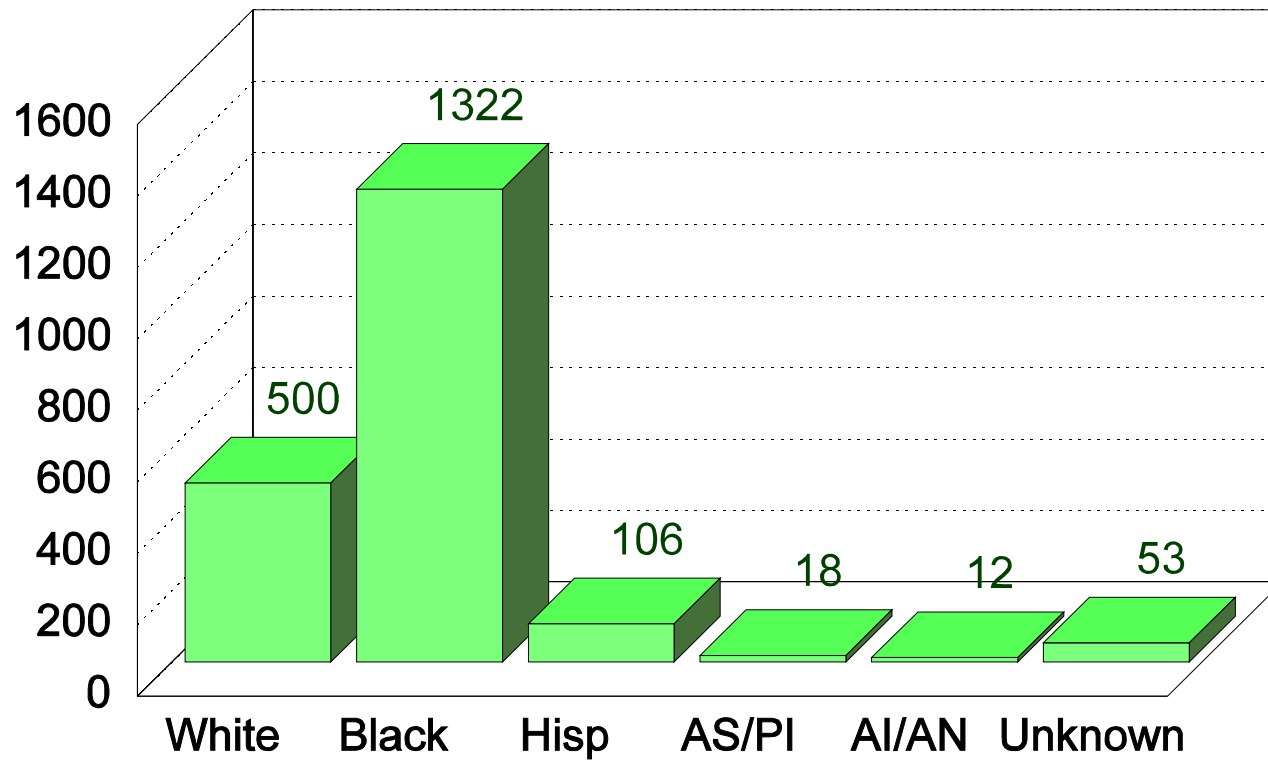
Total 2011

State of Kansas Reported Cases of Gonorrhea by Age January - September 2000



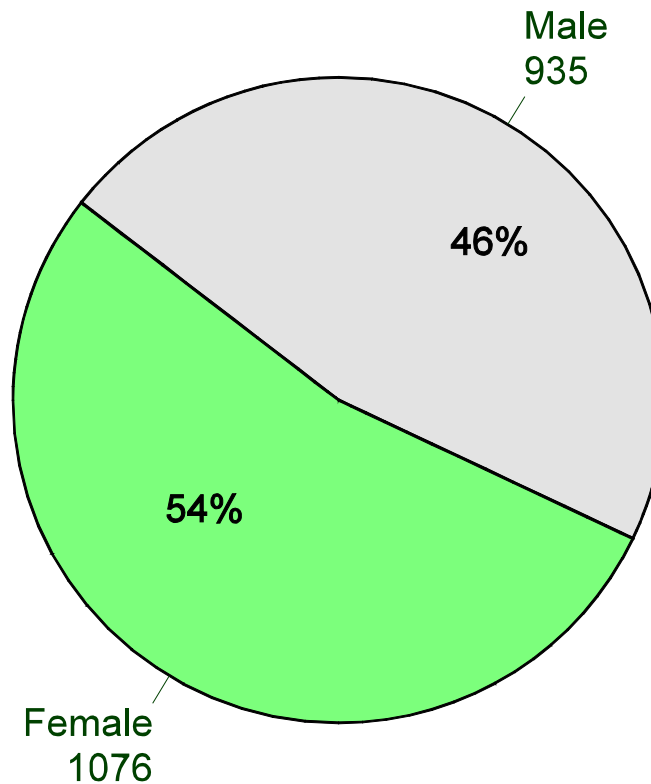
Total 2011

State of Kansas Reported Cases of Gonorrhea by Race January - September 2000



Total 2011

State of Kansas Reported Cases of Gonorrhea by Sex January - September 2000



Total 2011

State of Kansas

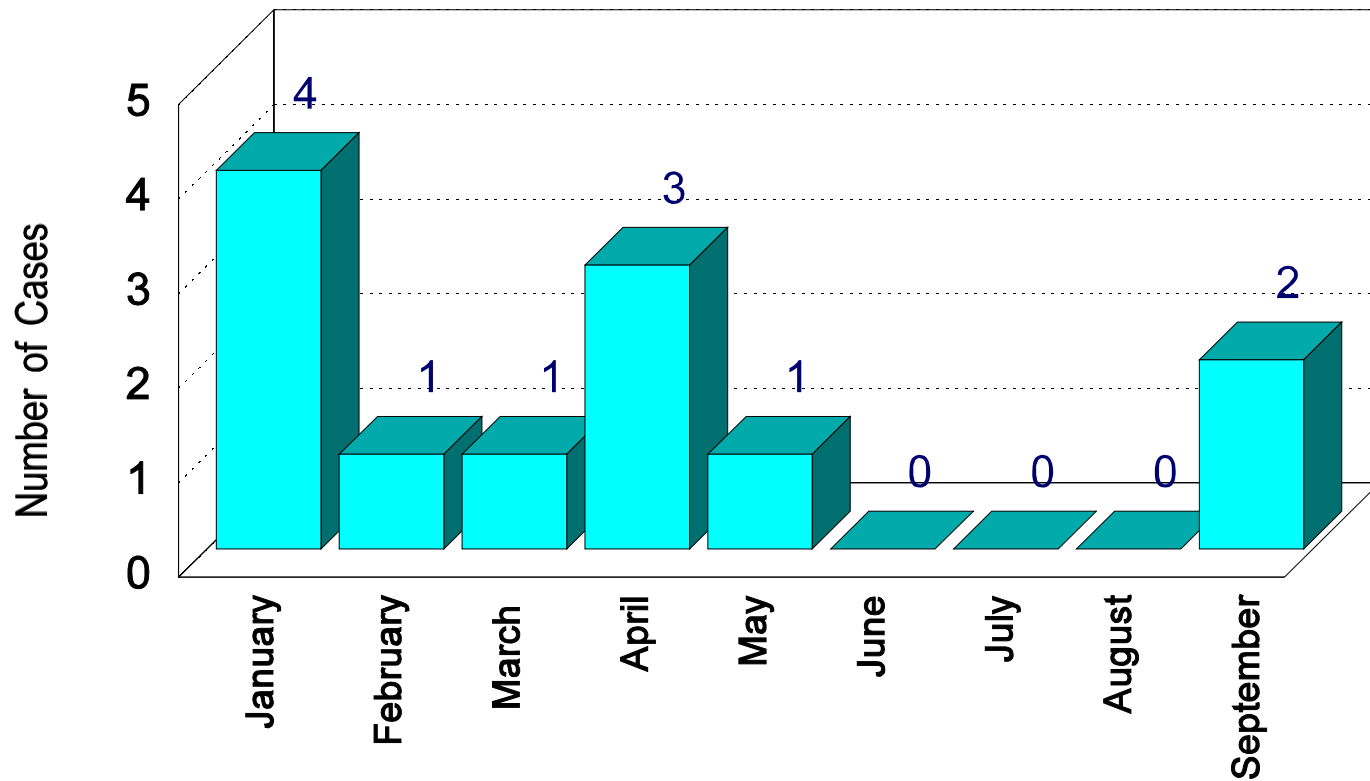
Reported Cases of Gonorrhea by County

January - September 2000

CHEYENNE	RAWLINS	DECATUR	NORTON	PHILLIPS	SMITH	JEWELL	REPUBLIC	WASHINGTON	MARSHALL	NEMAHA	BROWN	DONIPHAN
			1							1	1	3
SHERMAN	THOMAS	SHERIDAN	GRAHAM	ROOKS	OSBORNE	MITCHELL	CLOUD	CLAY	POTTAWATOMIE	JACKSON	ATCHISON	
						2	1		1	3	6	
WALLACE	LOGAN	GOVE	TREGO	ELLIS	RUSSELL	LINCOLN	OTTAWA	DICKINSON	RILEY	SHAWNEE	JEFFERSON	LEAVENWORTH
			1	7			3		23		5	45
						ELLSWORTH	SALINE		GEARY	WABAUNSEE	271	WYANDOTTE
							35	4	83	1		713
GREELEY	WICHITA	SCOTT	LANE	NESS	RUSH	BARTON	MCPHERSON	MARION	MORRIS	LYON	OSAGE	DOUGLAS
						9	8		1	10	1	66
					PAWNEE	STAFFORD	RICE		CHASE		COFFEY	FRANKLIN
									1		1	5
HAMILTON	KEARNEY	FINNEY	HODGEMAN				RENO	HARVEY				MIAMI
	2	13					17	2				2
			GRAY	FORD	EDWARDS	PRATT	KINGMAN	SEDGWICK	BUTLER	GREENWOOD	WOODSON	ALLEN
				3				507	6	1		BOURBON
STANTON	GRANT	HASKELL			KIOWA						WILSON	NEOSHO
	1											1
			MEADE	CLARK	COMANCHE	BARBER	HARPER	SUMNER	COWLEY	ELK		
			2					2	9			
MORTON	STEVENS	SEWARD								CHAUTAQUA	MONTGOMERY	LABETTE
	1	5								1	10	7
												CHEROKEE
												4

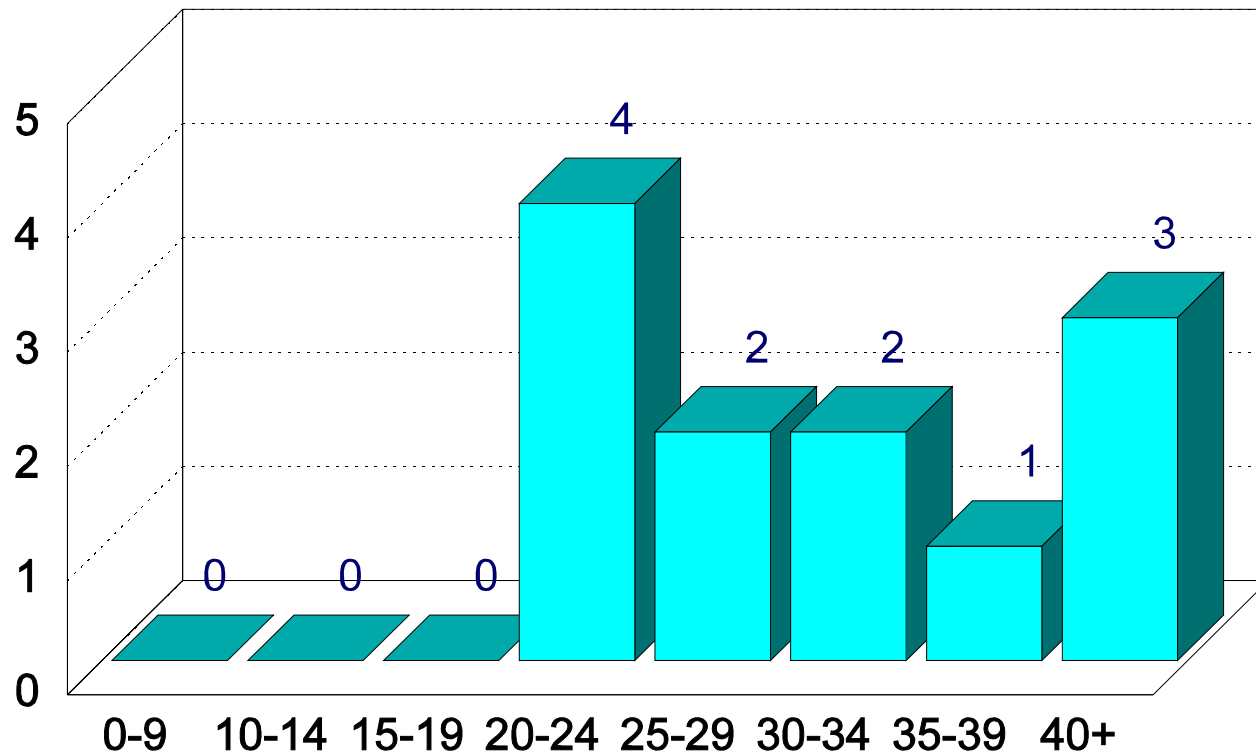
Total 2011

State of Kansas Reported Cases of Early Syphilis by Month January - September 2000



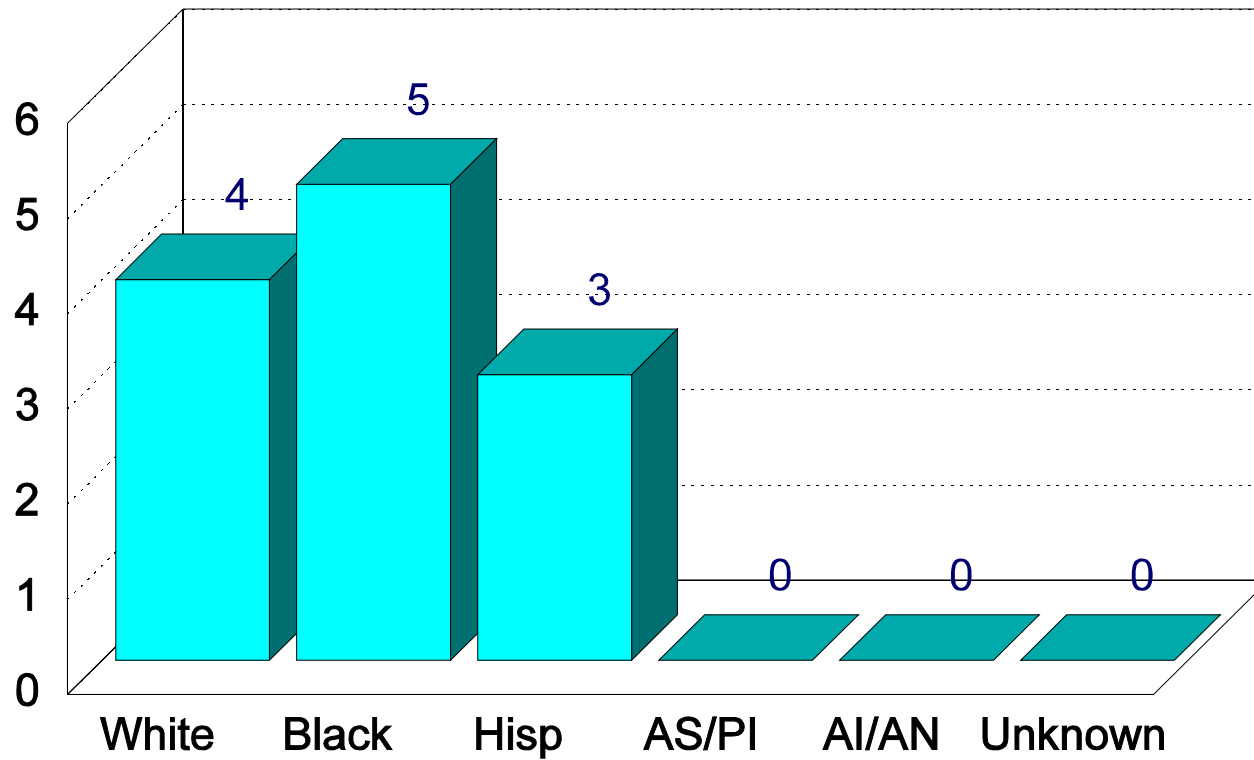
Total 12

State of Kansas Reported Cases of Early Syphilis by Age January - September 2000



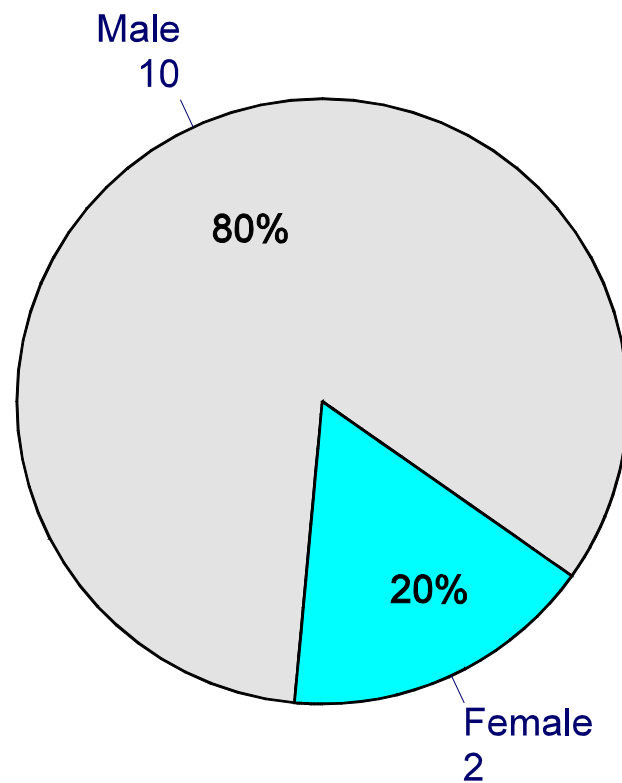
Total 12

State of Kansas Reported Cases of Early Syphilis by Race January - September 2000



Total 12

State of Kansas Reported Cases of Early Syphilis By Sex January - September 2000



Total 12

State of Kansas

Reported Cases of Primary and Secondary Syphilis by County

January - September 2000

CHEYENNE	RAWLINS	DECATUR	NORTON	PHILLIPS	SMITH	JEWELL	REPUBLIC	WASHINGTON	MARSHALL	NEMAHA	BROWN	DONIPHAN
SHERMAN	THOMAS	SHERIDAN	GRAHAM	ROOKS	OSBORNE	MITCHELL	CLOUD	CLAY	POTTAWATOMIE	JACKSON	ATCHISON	JEFFERSON
WALLACE	LOGAN	GOVE	TREGO	ELLIS	RUSSELL	LINCOLN	OTTAWA	RILEY	SHAWNEE	LEAVENWORTH	WYANDOTTE	1
GREELEY	WICHITA	SCOTT	LANE	NESS	RUSH	BARTON	SALINE	DICKINSON	GEARY	WABAUNSEE	2	JOHNSON
HAMILTON	KEARNEY	FINNEY	HODGEMAN	PAWNEE	RICE	MCPHERSON	MARION	MORRIS	LYON	OSAGE	DOUGLAS	1
STANTON	GRANT	HASKELL	GRAY	FORD	EDWARDS	STAFFORD	RENO	HARVEY	CHASE	COFFEY	FRANKLIN	MIAMI
MORTON	STEVENS	SEWARD	MEADE	CLARK	COMANCHE	BARBER	KINGMAN	SEDGWICK	BUTLER	GREENWOOD	WOODSON	ALLEN
								1	WILSON	NEOSHO	BOURBON	CRAWFORD
									ELK	LABETTE	CHEROKEE	
									CHAUTAUQUA	MONTGOMERY		

Total 5

State of Kansas

Reported Cases of Early Latent Syphilis by County

January - September 2000

CHEYENNE	RAWLINS	DECATUR	NORTON	PHILLIPS	SMITH	JEWELL	REPUBLIC	WASHINGTON	MARSHALL	NEMAHA	BROWN	DONIPHAN	
SHERMAN	THOMAS	SHERIDAN	GRAHAM	ROOKS	OSBORNE	MITCHELL	CLOUD	CLAY	POTTAWATOMIE	JACKSON	ATCHISON		
WALLACE	LOGAN	GOVE	TREGO	ELLIS	RUSSELL	LINCOLN	OTTAWA	RILEY	SHAWNEE	JEFFERSON	LEAVENWORTH	WYANDOTTE	
								2	GEARY	WABAUNSEE	1	JOHNSON	
						ELLSWORTH	SALINE	DICKINSON	MORRIS	OSAGE	DOUGLAS	MIAMI	
GREELEY	WICHITA	SCOTT	LANE	NESS	RUSH	BARTON	MCPHERSON	MARION	LYON	FRANKLIN			
							RICE		CHASE	COFFEY	ANDERSON	LINN	
					PAWNEE	STAFFORD	RENO	HARVEY	BUTLER	GREENWOOD	WOODSON	ALLEN	BOURBON
HAMILTON	KEARNEY	FINNEY		HODGEMAN									
		1	GRAY	FORD	EDWARDS	PRATT	SEDGWICK	1					
STANTON	GRANT	HASKELL			KIOWA	KINGMAN				WILSON	NEOSHO	CRAWFORD	
									ELK				
MORTON	STEVENS	SEWARD	MEADE	CLARK	COMANCHE	BARBER	HARPER	SUMNER	COWLEY	ELK			
										CHAUTAQUA	MONTGOMERY	LABETTE	CHEROKEE
											2		

Total 7

State of Kansas

Reported Cases of Early Syphilis by County

January - September 2000

CHEYENNE	RAWLINS	DECATUR	NORTON	PHILLIPS	SMITH	JEWELL	REPUBLIC	WASHINGTON	MARSHALL	NEMAHA	BROWN	DONIPHAN
SHERMAN	THOMAS	SHERIDAN	GRAHAM	ROOKS	OSBORNE	MITCHELL	CLOUD	CLAY	POTTAWATOMIE	JACKSON	ATCHISON	
WALLACE	LOGAN	GOVE	TREGO	ELLIS	RUSSELL	LINCOLN	OTTAWA	RILEY	SHAWNEE	JEFFERSON	LEAVENWORTH	WYANDOTTE
GREELEY	WICHITA	SCOTT	LANE	NESS	RUSH	BARTON	ELLSWORTH	2	GEARY	3	WABAUNSEE	1
HAMILTON	KEARNEY	FINNEY	HODGEMAN	PAWNEE	RICE	MCPHERSON	MARION	MORRIS	LYON	OSAGE	DOUGLAS	1
STANTON	GRANT	HASKELL	FORD	EDWARDS	STAFFORD	RENO	HARVEY	CHASE	COFFEY	ANDERSON	MIAMI	LINN
MORTON	STEVENS	SEWARD	MEADE	CLARK	COMANCHE	BARBER	HARPER	BUTLER	GREENWOOD	WOODSON	ALLEN	BOURBON
			1	GRAY	KIOWA	PRATT	KINGMAN	2	SEDGWICK	WILSON	NEOSHO	CRAWFORD
								SUMNER	ELK	WILSON	NEOSHO	CRAWFORD
										2	LABETTE	CHEROKEE
									CHAUTAQUA	MONTGOMERY	LABETTE	CHEROKEE

Total 12