

**KANSAS DEPARTMENT OF HEALTH AND ENVIRONMENT
BUREAU OF EPIDEMIOLOGY AND DISEASE PREVENTION
SEXUALLY TRANSMITTED DISEASE PROGRAM**



TABLE OF CONTENTS

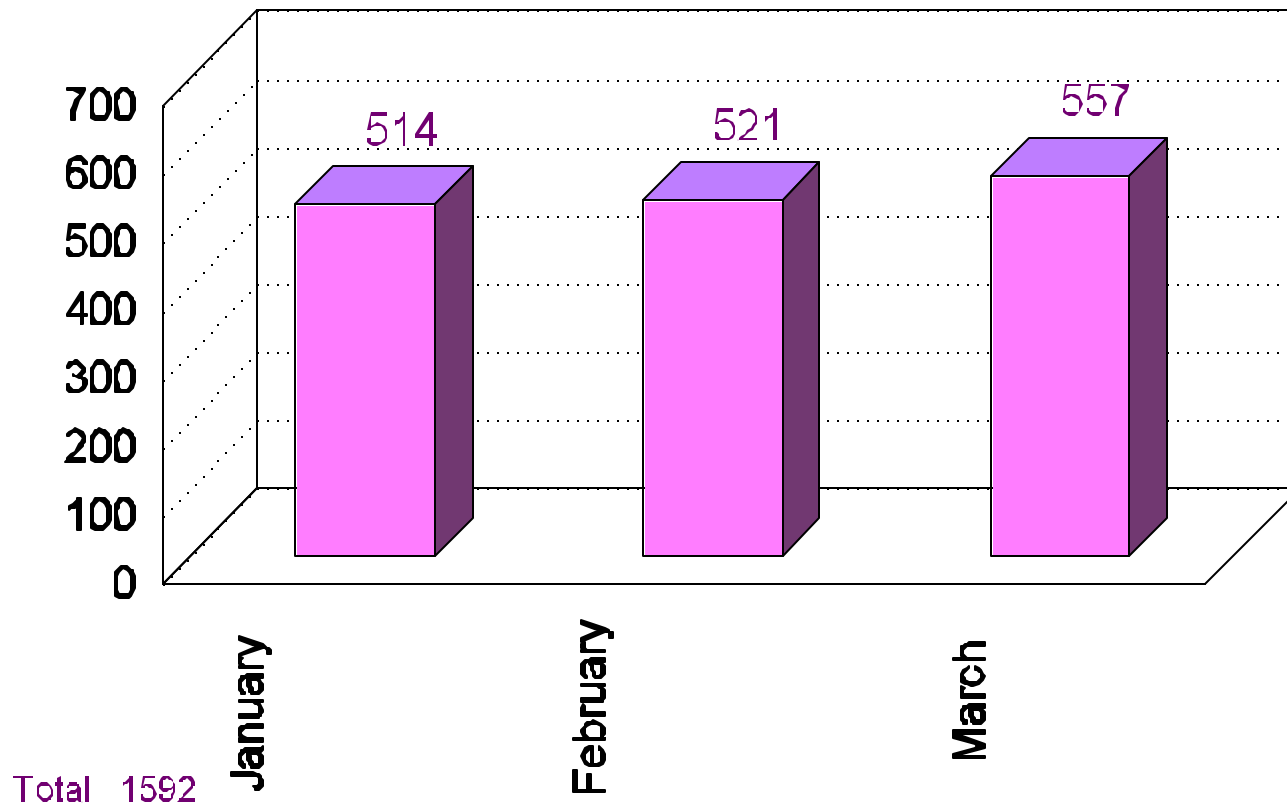
JANUARY - MARCH, 2000

1.....Reported Cases of Chlamydia by Month
2.....Reported Cases of Chlamydia by Age
3.....Reported Cases of Chlamydia by Race
4.....Reported Cases of Chlamydia by Sex
5.....Reported Cases of Chlamydia by County

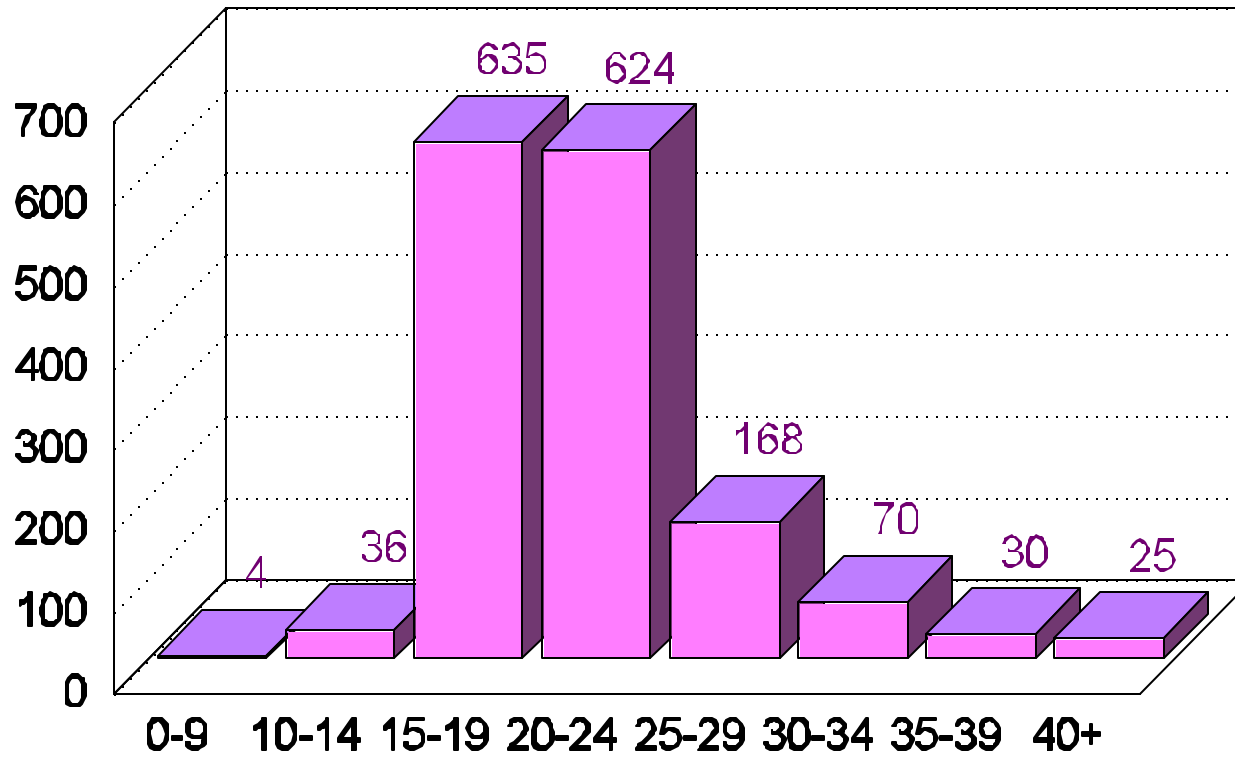
6.....Reported Cases of Gonorrhea by Month
7.....Reported Cases of Gonorrhea by Age
8.....Reported Cases of Gonorrhea by Race
9.....Reported Cases of Gonorrhea by Sex
10.....Reported Cases of Gonorrhea by County

11.....Reported Cases of Early Syphilis by Month
12.....Reported Cases of Early Syphilis by Age
13.....Reported Cases of Early Syphilis by Race
14.....Reported Cases of Early Syphilis by Sex
15.....Reported Cases of Primary and Secondary Syphilis by County
16.....Reported Cases of Early Latent Syphilis by County
17.....Reported Cases of Early Syphilis by County

State of Kansas Reported Cases of Chlamydia by Month January - March 2000

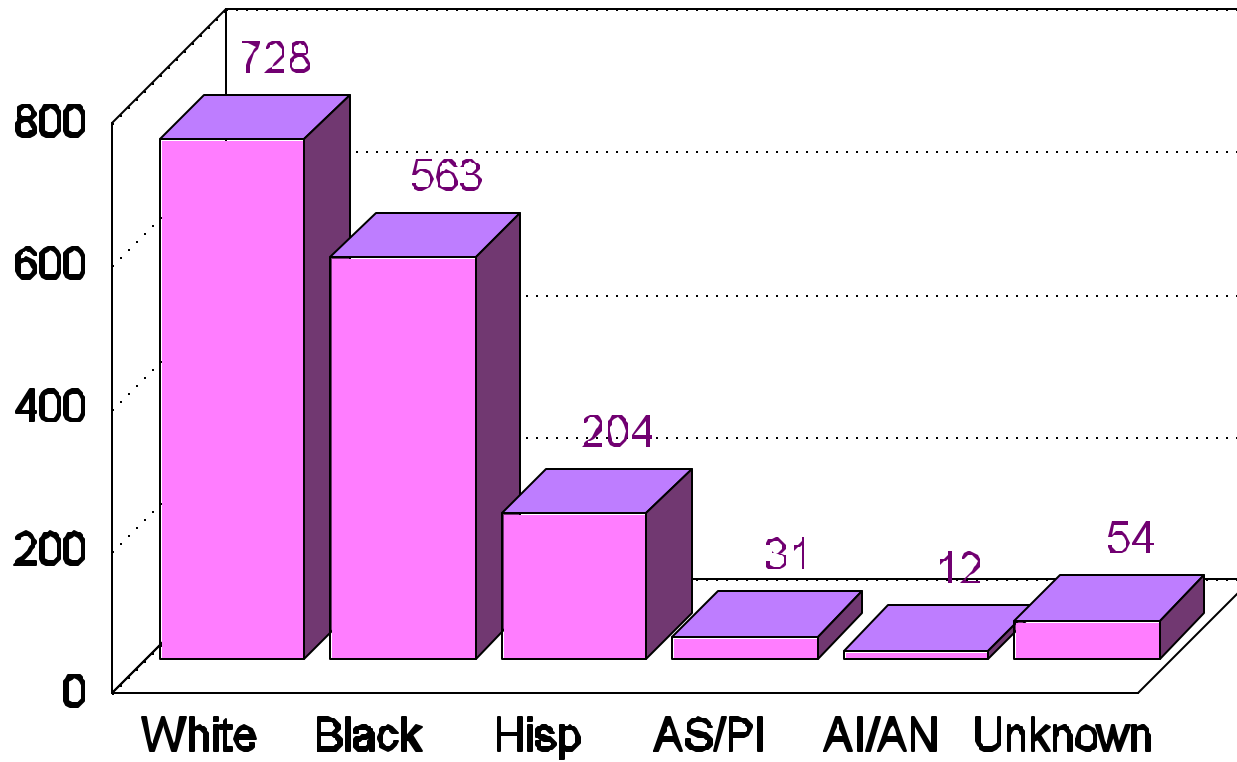


State of Kansas Reported Cases of Chlamydia by Age January - March 2000



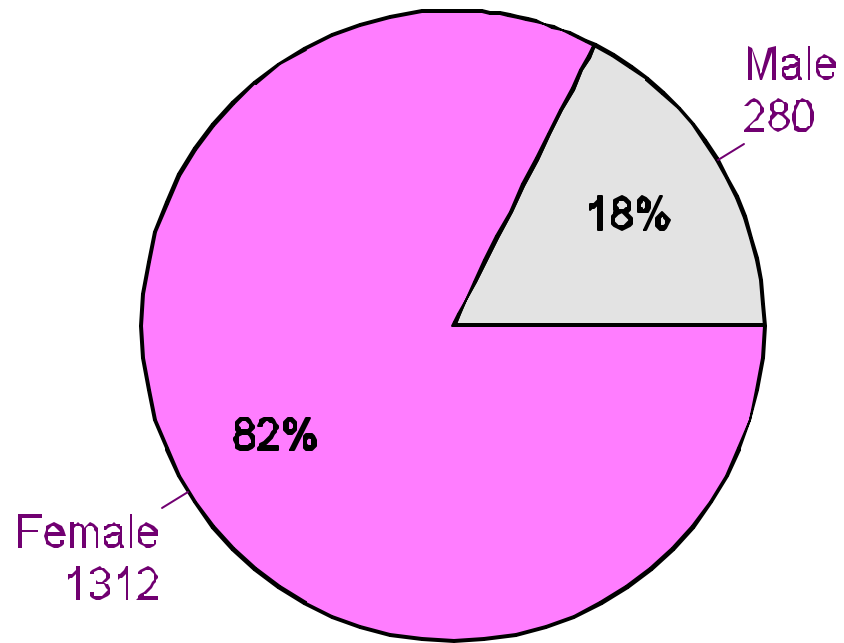
Total 1592

State of Kansas Reported Cases of Chlamydia by Race January - March 2000



Total 1592

State of Kansas
Reported Cases of Chlamydia by Sex
January - March 2000



Total 1592

State of Kansas

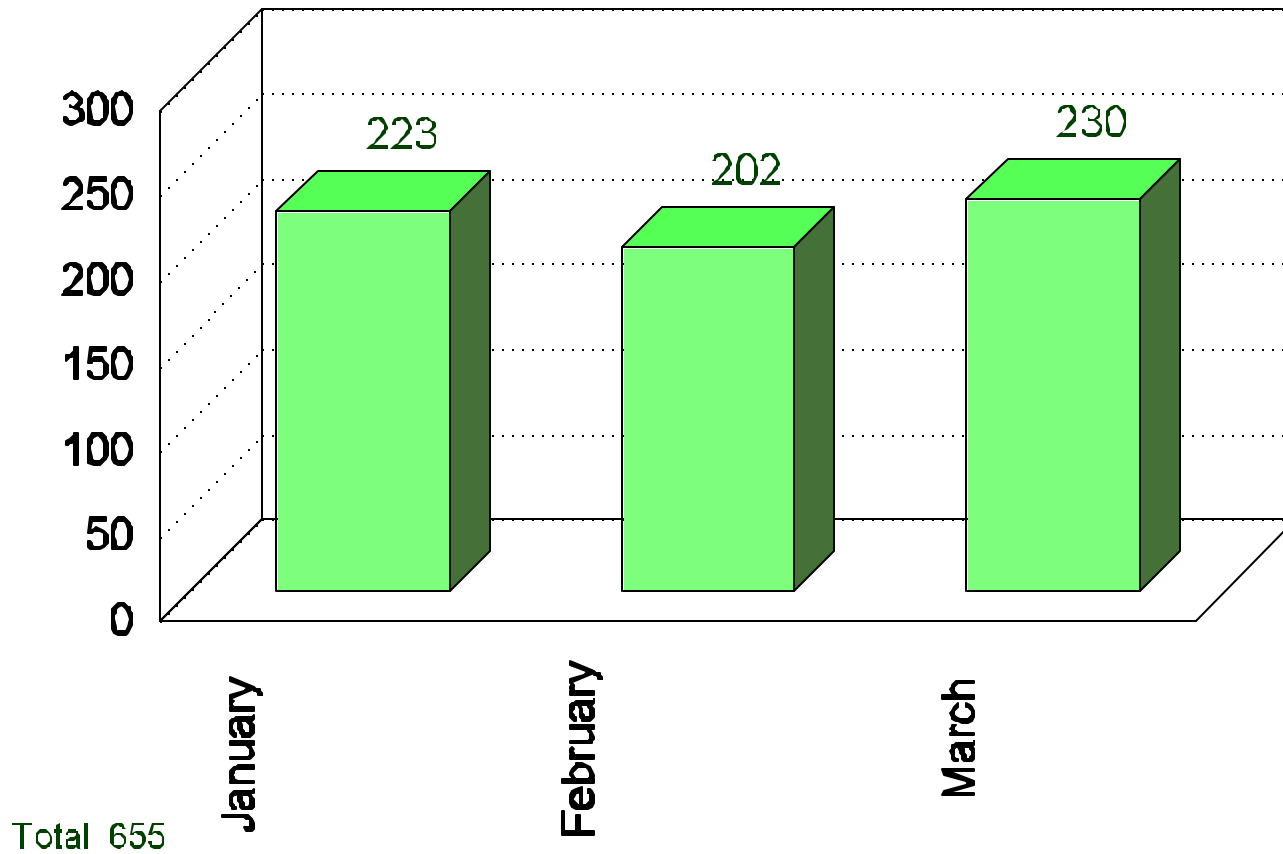
Reported Cases of Chlamydia by County

January - March 2000

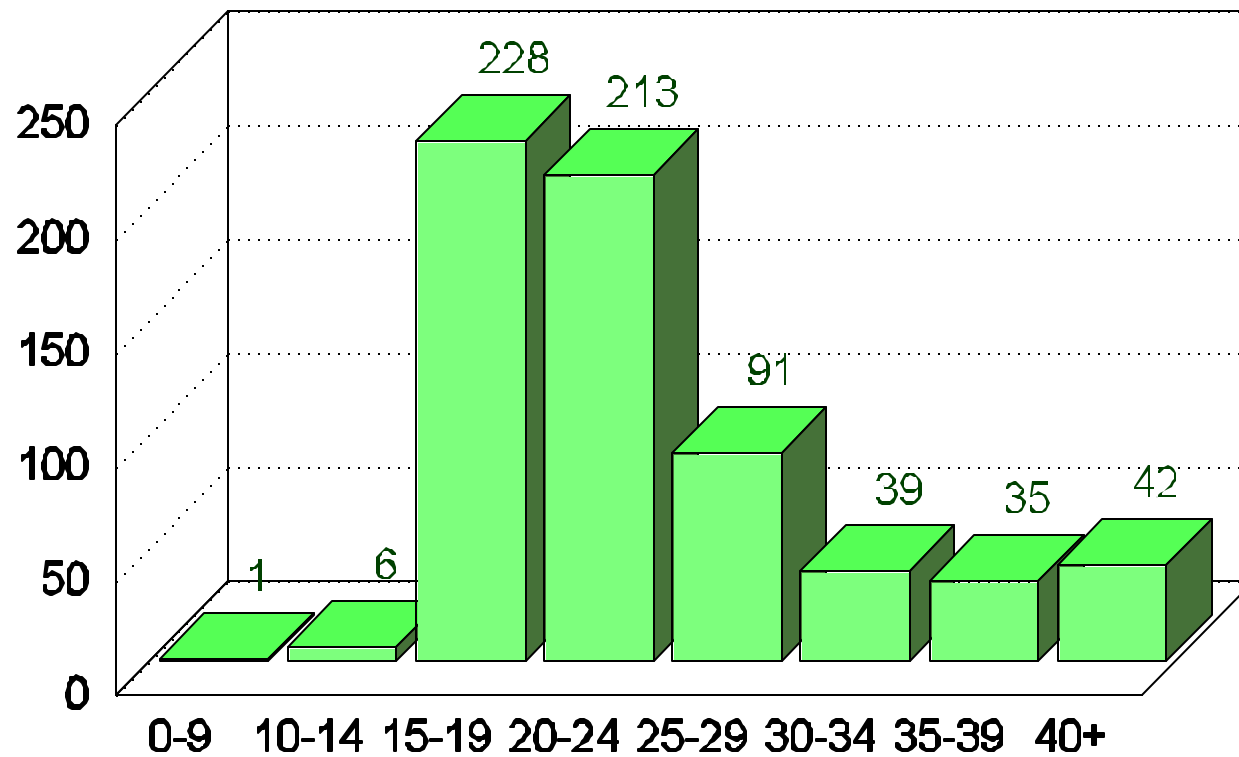
CHEYENNE	RAMBLE	DECATUR	NORTON	PHILLIPS	SMITH	JEWELL	REPUBLIC 1	WASHINGTON 1	MARSHALL 3	NEMAHA 2	BROWN	DONIPHAN 4
SHERMAN 1	THOMAS	SHERIDAN 1	GRAHAM	ROCKS 3	OSBORNE 2	MITCHELL 1	CLOUD 2	CLAY 2	POTTAWATOMIE 5	JACKSON 2	ATCHISON 5	JEFFERSON 3
WALLACE 1	LOGAN	COVE	TREDD 2	ELLIS 14	RUSSELL 1	LINCOLN	OTTAWA	DICKINSON 9	RILEY 41	SHAWNEE 119	LEAVENWORTH 28	WYANDOTTE 297
GREELEY	WICHITA	SCOTT	LANE	NESS	RUSH	BARTON 10	SALINE 33	MCPHERSON 5	WABALNSEE 67	MORRIS 1	OSAGE 5	DOUGLASS 65
HAMILTON 2	KEARNEY 2	FINNEY 32	HODGEMAN	PAWNEE	EDWARDS	STAFFORD 2	ELLSWORTH	MARION 4	GEARY 1	LYON 18	FRANKLIN 16	MAMI 6
STANTON 2	GRANT 9	HASKELL	GRAY 1	FORD 26	KIOWA 1	PRATT 3	MCPHERSON 5	CHASE 1	MORRIS 1	COFFEY 2	ANDERSON	LINN
MORTON	STEVENS 4	SEWARD 12	MEADE 3	CLARK	COMANCHE	BARBER	RENS 26	HARVEY 18	BUTLER 22	GREENWOOD 1	WOODSON 4	BOURBON 5
							KINDMAN 2	SEDGWICK 445	ELK 4	WILSON 4	NEOSHO 3	CRAWFORD 12
							HARPER	SUMNER 7	CHAUTAUKIA	MONTGOMERY 7	LABETTE 10	CHEROKEE 5
								COWLEY 20				

Total 1592

State of Kansas Reported Cases of Gonorrhea by Month January - March 2000

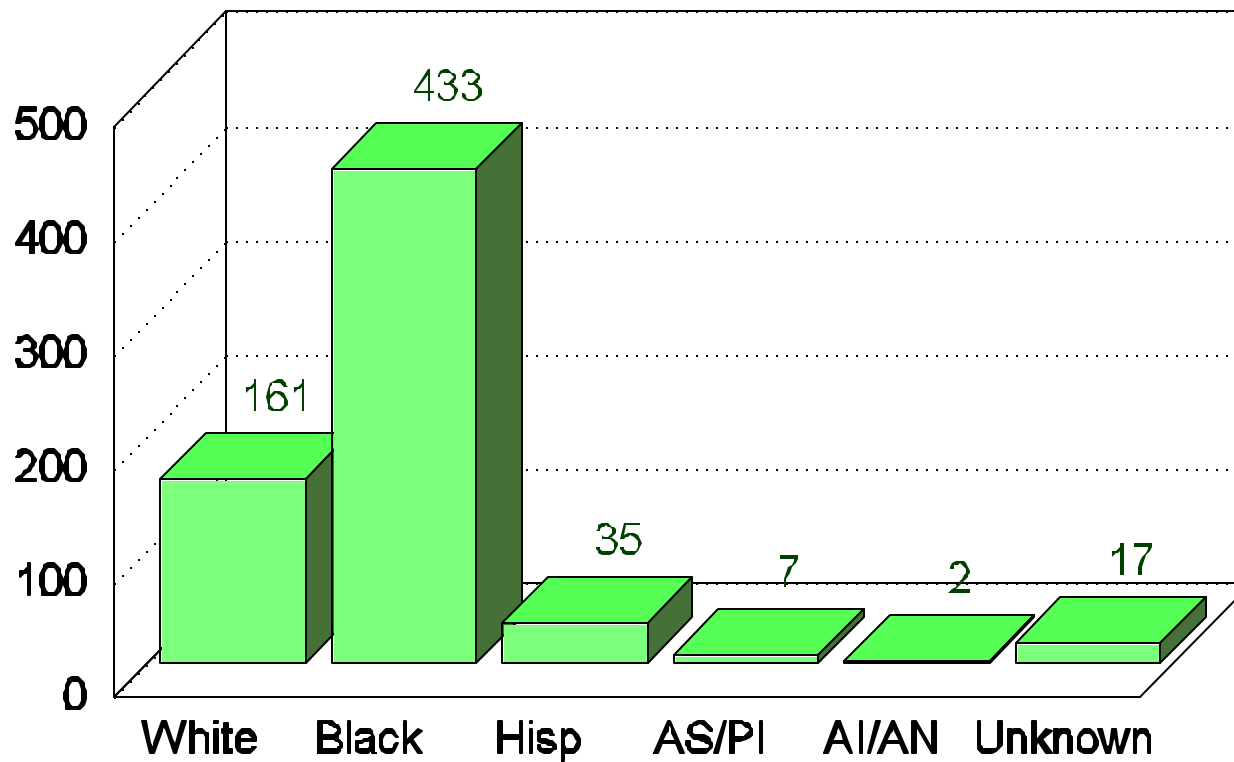


State of Kansas Reported Cases of Gonorrhea by Age January - March 2000



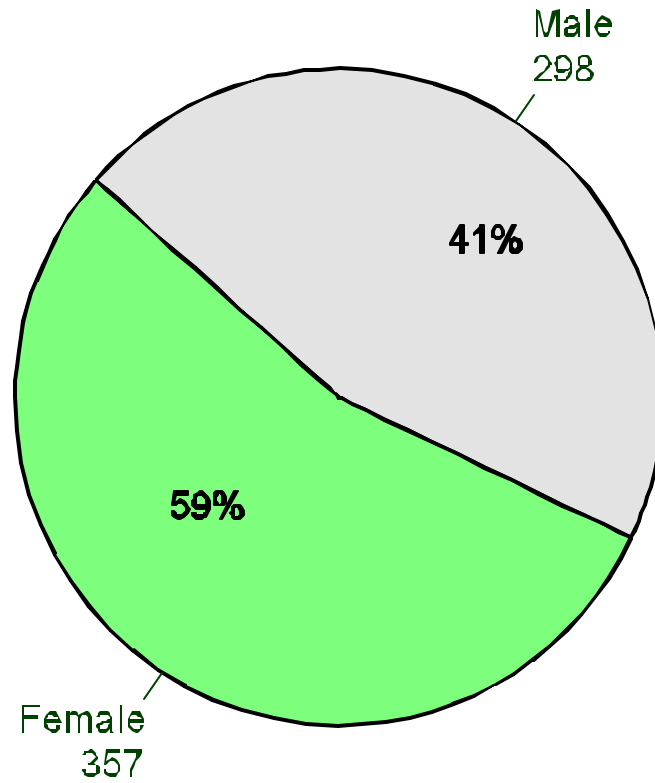
Total 655

State of Kansas Reported Cases of Gonorrhea by Race January - March 2000



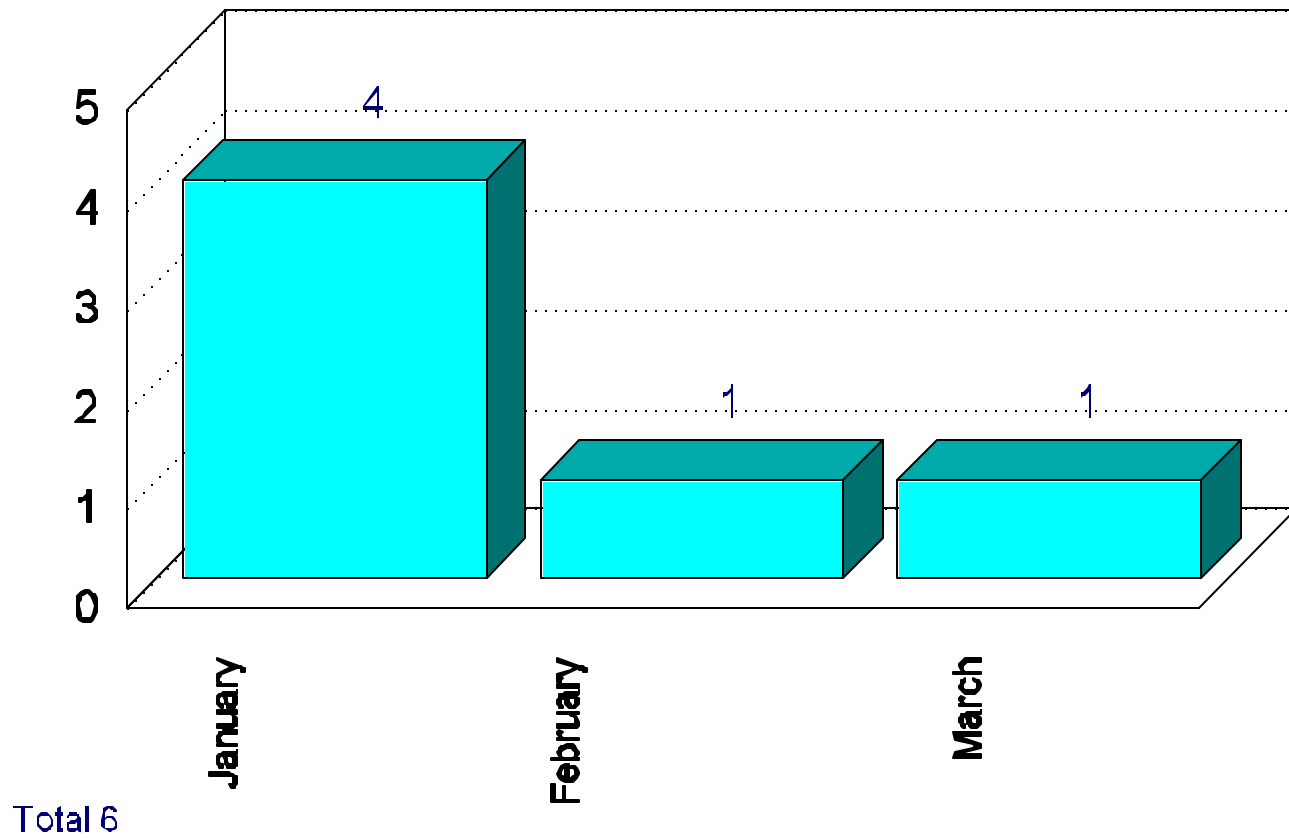
Total 655

State of Kansas
Reported Cases of Gonorrhea by Sex
January - March 2000

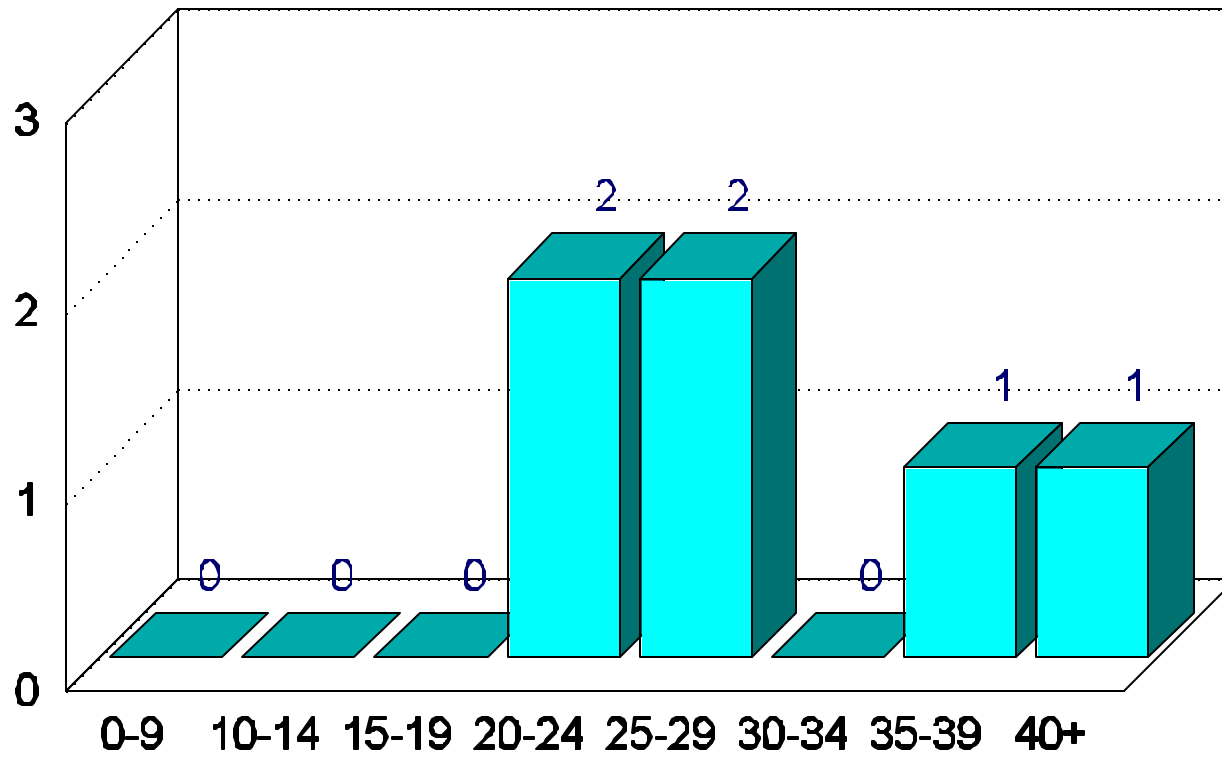


Total 655

State of Kansas Reported Cases of Early Syphilis by Month January - March 2000

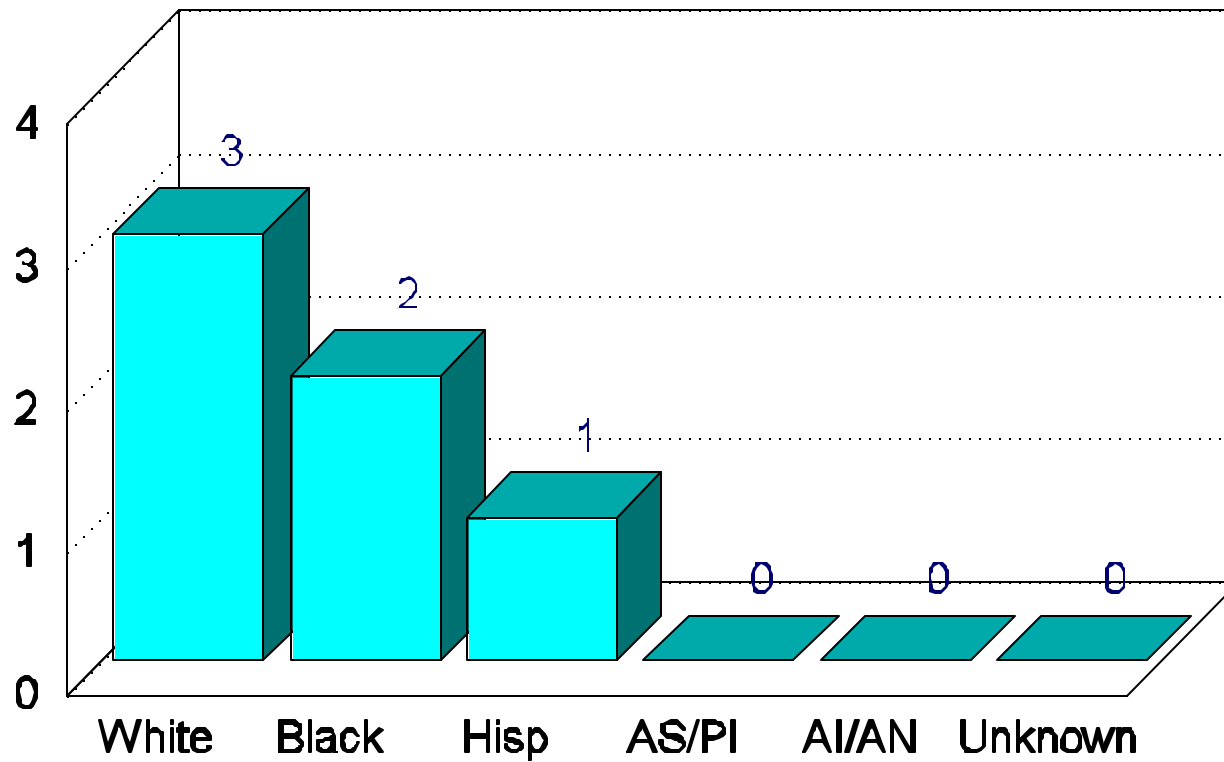


State of Kansas Reported Cases of Early Syphilis by Age January - March 2000



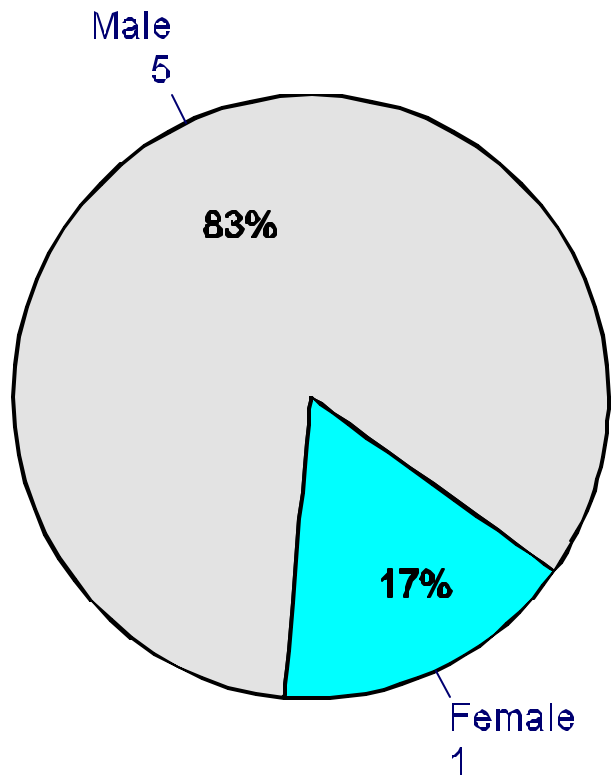
Total 6

State of Kansas Reported Cases of Early Syphilis by Race January - March 2000



Total 6

State of Kansas
Reported Cases of Early Syphilis By Sex
January - March 2000



Total 6

State of Kansas

Reported Cases of Primary and Secondary Syphilis by County

January - March 2000

CHEYENNE	RAVINE	DECATUR	NORTON	PHILLIPS	SMITH	JEWELL	REPUBLIC	WASHINGTON	MARSHALL	NEMAHA	BROWN	DONIPHAN
SHERMAN	THOMAS	HERIDAN	GRAHAM	ROOKS	OSBORNE	MITCHELL	CLOUD	CLAY	RILEY	POTTAWATOMIE	JACKSON	ATCHISON
WALLACE	LOGAN	COVE	TREGG	ELLIS	RUSSELL	LINCOLN	OTTAWA	DICKINSON	GEARY	WABALNSEE	SHAWNEE	JEFFERSON
OREGON	WICHITA	SCOTT	LANE	NESS	RUSH	BARTON	ELLSWORTH	SALINE	MORRIS	LYON	DEAGE	DOUGLAS
HAMILTON	KEARNEY	FINNEY	HODGEMAN	PAWNEE	STAFFORD	RICE	MCPherson	MARION	CHASE	COFFEY	ANDERSON	JOHNSON
STANTON	GRANT	HASKELL	GRAY	EDWARDS	PRATT	RENO	HARVEY	BUTLER	GREENWOOD	WOODSON	ALLEN	MAMI
MORTON	STEVENS	BENARD	MEADE	CLARK	KIOWA	KINSMAN	SEDGWICK	ELK	WILSON	NEOSHO	BOURBON	CRANFORD
				COMANCHE	BARBER	HARPER	GLIMMER	COALEY	CHATHAQUA	MONTGOMERY	LABETTE	CHEROKEE

Total 2

State of Kansas

Reported Cases of Early Latent Syphilis by County

January - March 2000

CHEYENNE	RAWLINS	DECATUR	NORTON	PHILLIPS	SMITH	JEWELL	REPUBLIC	WASHINGTON	MARSHALL	NEMAHA	BROWN	DONIPHAN
SHERMAN	THOMAS	SHERIDAN	GRAHAM	ROCKS	OSBORNE	MITCHELL	CLOUD	CLAY	POTTAWATOMIE	JACKSON	ATCHESON	JEFFERSON
WALLACE	LOGAN	GOVE	TREGG	ELLIS	RUSSELL	LINCOLN	OTTAWA	RILEY	SHAWNEE	LEAVENWORTH	WYANDOTTE	JOHNSON
GREELEY	WICHITA	SCOTT	LANE	NESS	RUSH	BARTON	ELLSWORTH	SALINE	DICKINSON	OSAGE	DOUGLAS	MAMI
HAMILTON	KEARNEY	FINNEY	HOOBEMAN	PAVNEE	BARTON	STAFFORD	ELLSWORTH	MCPHERSON	MARION	LYDN	FRANKLIN	ANN
STANTON	GRANT	HASKELL	GRAY	EDWARDS	STAFFORD	RENO	RENO	HARVEY	BUTLER	GREENWOOD	WOODSON	ALLEN
MORTON	STEVENS	SEWARD	MEADE	CLARK	KIOWA	PRATT	KIOWA	SEDGWICK	1	ELK	WILSON	NEOSHO
					COMANCHE	BARBER	HARPER	ELMER	COMLEY	CHAUTAUGIA	MONTGOMERY	2
												CHEROKEE

Total 4

State of Kansas

Reported Cases of Early Syphilis by County

January - March 2000

CHEYENNE	RAWLINS	DECATUR	NORTON	PHILLIPS	SMITH	JEWELL	REPUBLIC	WASHINGTON	MARSHALL	NEMAHA	BROWN	DONIPHAN
SHERMAN	THOMAS	SHERIDAN	GRAHAM	ROCKS	OSBORNE	MITCHELL	CLOUD	CLAY	RITAMA-TOME	JACKSON	ATCHISON	
WALLACE	LOGAN	GOVE	TREGG	ELLIS	RUSSELL	LINCOLN	OTAWA	RILEY	SHAWNEE	JEFFERSON	LEAVENWORTH	WYANDOTTE
OREELEY	WICHITA	SCOTT	LANE	NESS	RUSH	BARTON	SALINE	DICKINSON	DEARBORN	WABALUNSEE	2	JOHNSON
HAMILTON	KEARNEY	FINNEY	HODGEMAN	PAWNEE		STAFFORD	ELLSWORTH	MCHERRISON	MARION	MORRIS	OSAGE	DOUGLAS
STANTON	GRANT	HASKELL	GRAY		EDWARDS	STAFFORD	RICE	RENO	HARVEY	CHASE	LYON	FRANKLIN
MORTON	STEVENS	SEWARD	MEADE	CLARK	KOOWA	PRATT		SEDGWICK	2	BUTLER	GREENWOOD	WOODSON
					COMANCHE	BARBER	HARPER	SUMNER	COALEY	ELK	WALSON	NEOSHO
										CHALITALQUA	MONTGOMERY	LABETTE
											2	CHEROKEE

Total 6