

**KANSAS DEPARTMENT OF HEALTH AND ENVIRONMENT  
BUREAU FOR DISEASE PREVENTION AND HEALTH PROMOTION  
SEXUALLY TRANSMITTED DISEASE CONTROL PROGRAM**

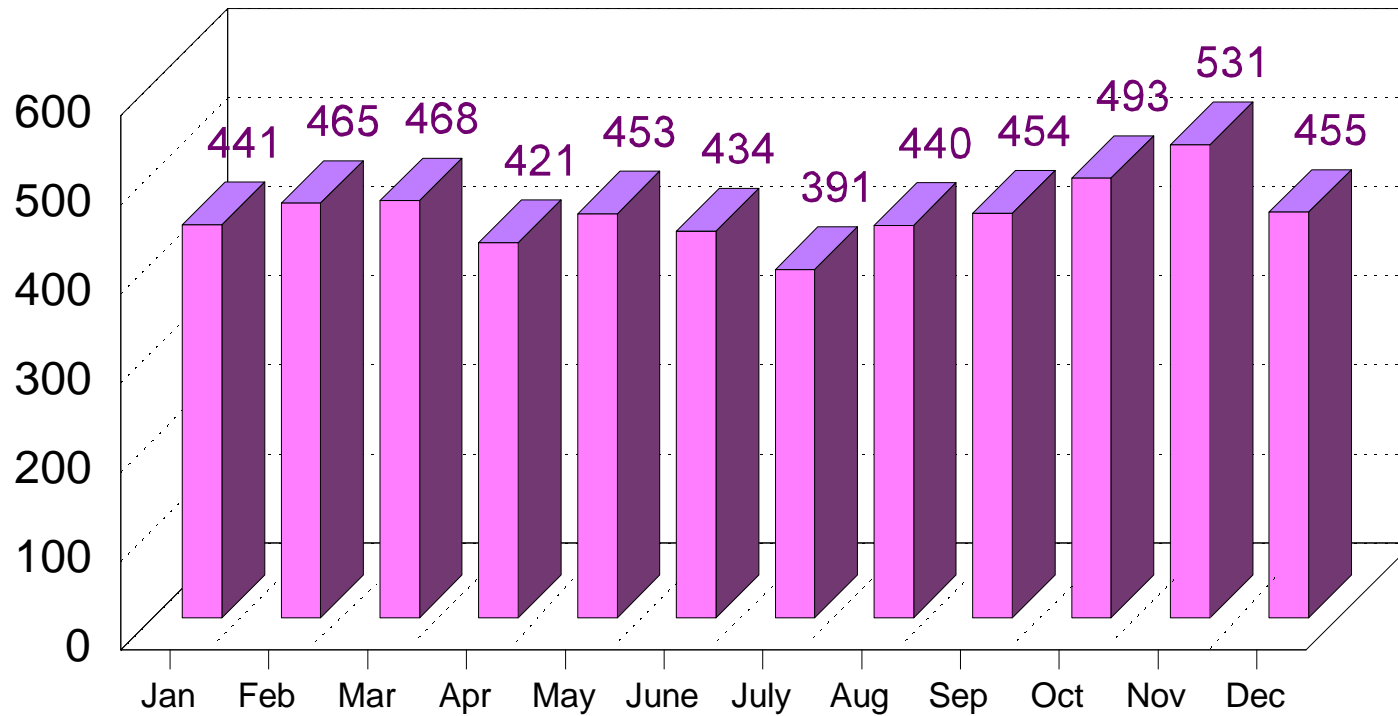
TABLE OF CONTENTS

**JANUARY - DECEMBER, 1998**

1.....	Chlamydia Morbidity
2.....	Chlamydia By Age
3.....	Chlamydia By Race
4.....	Chlamydia By Sex
5.....	Chlamydia Morbidity By County
6.....	Gonorrhea Morbidity
7.....	Gonorrhea By Age
8.....	Gonorrhea By Race
9.....	Gonorrhea By Sex
10.....	Gonorrhea Morbidity By County
11.....	Early Syphilis Morbidity
12.....	Early Syphilis By Age
13.....	Early Syphilis By Race
14.....	Early Syphilis By Sex
15.....	Early Syphilis (P&S) By County
16.....	Early Syphilis (EL) By County
17.....	Early Syphilis (Total) By County
18.....	Sexually Transmitted Disease Morbidity By County

# Chlamydia Morbidity

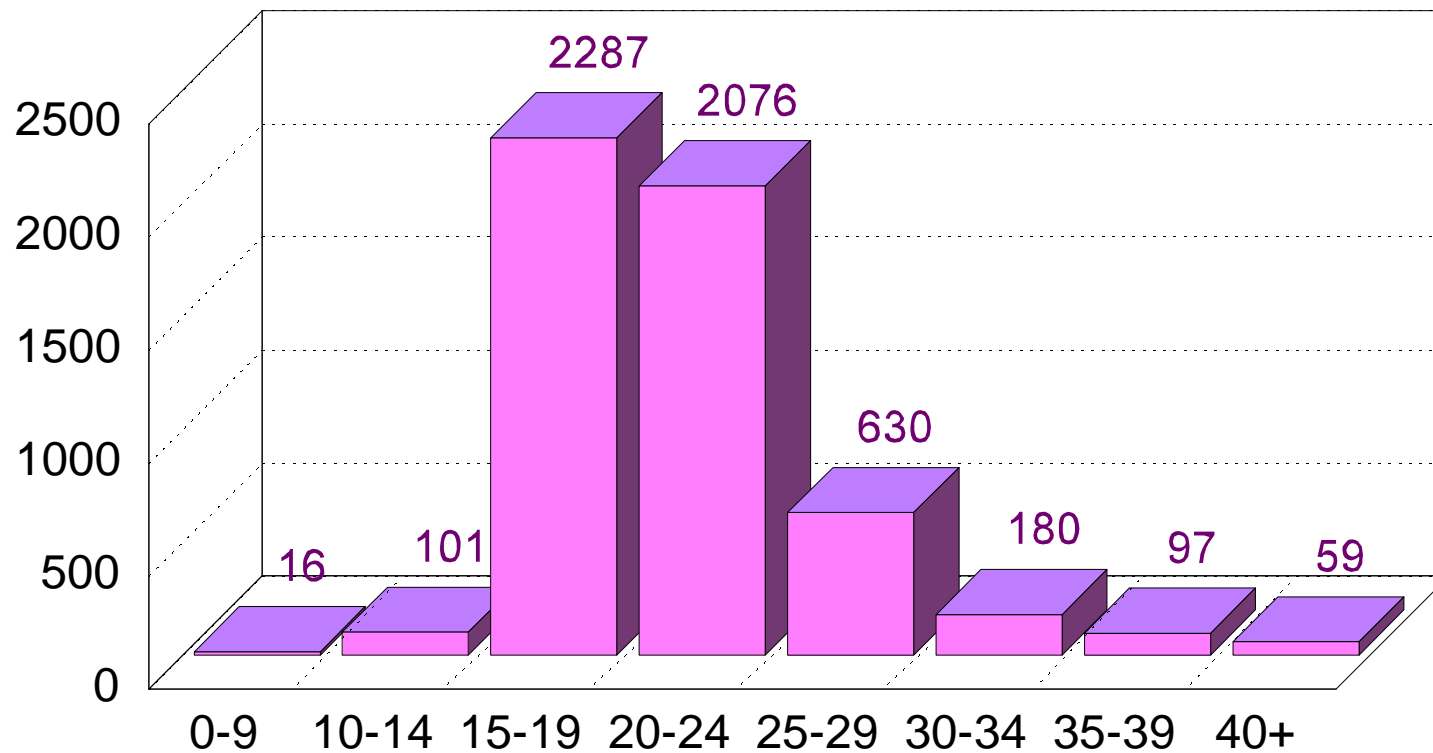
January - December 1998



Total 5446

# Chlamydia By Age

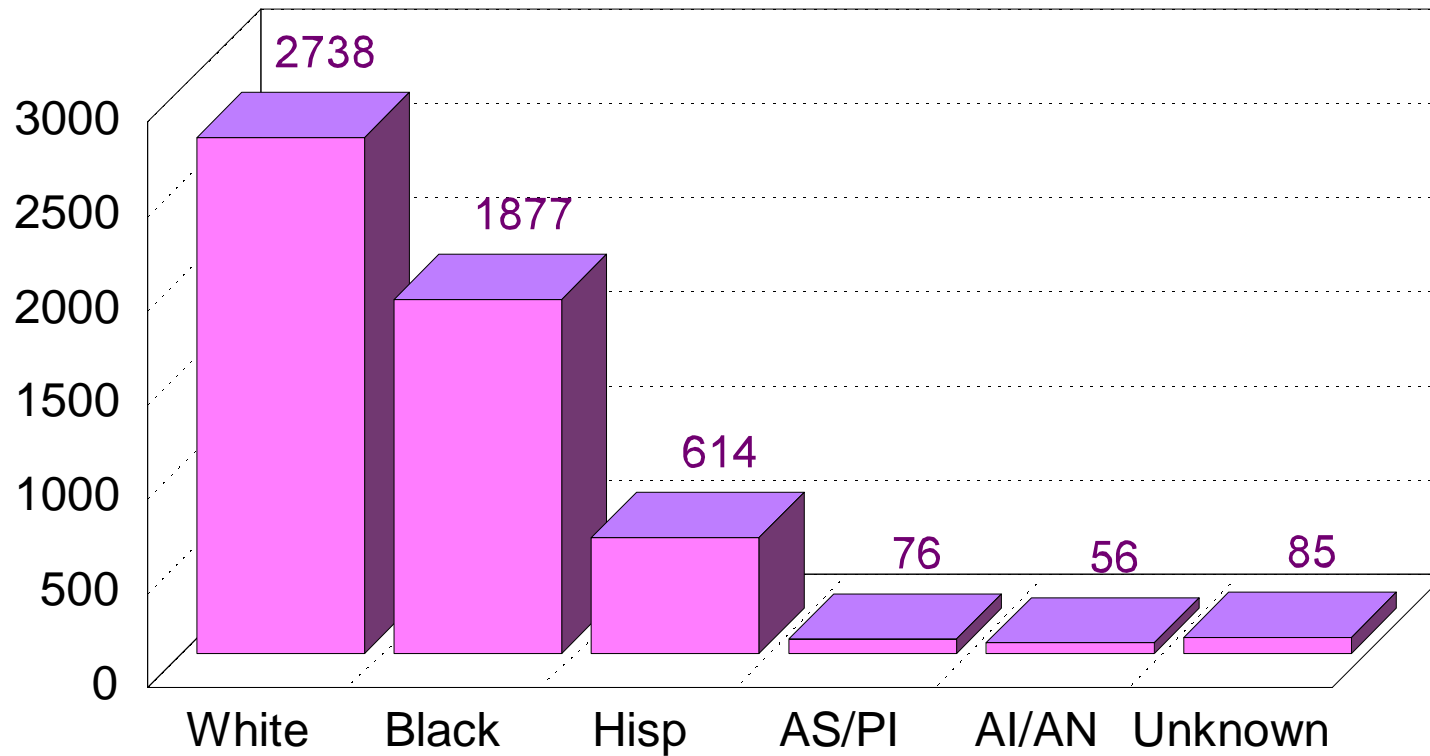
January - December 1998



Total 5446

# Chlamydia By Race

January - December 1998

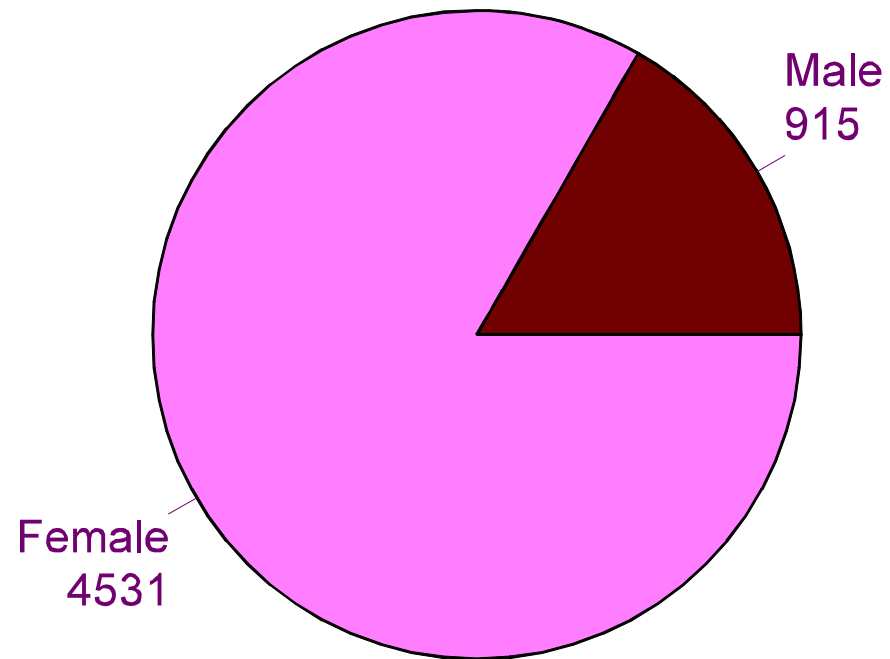


Total 5446

# Chlamydia By Sex

January - December 1998

---



Total 5446

# CHLAMYDIA

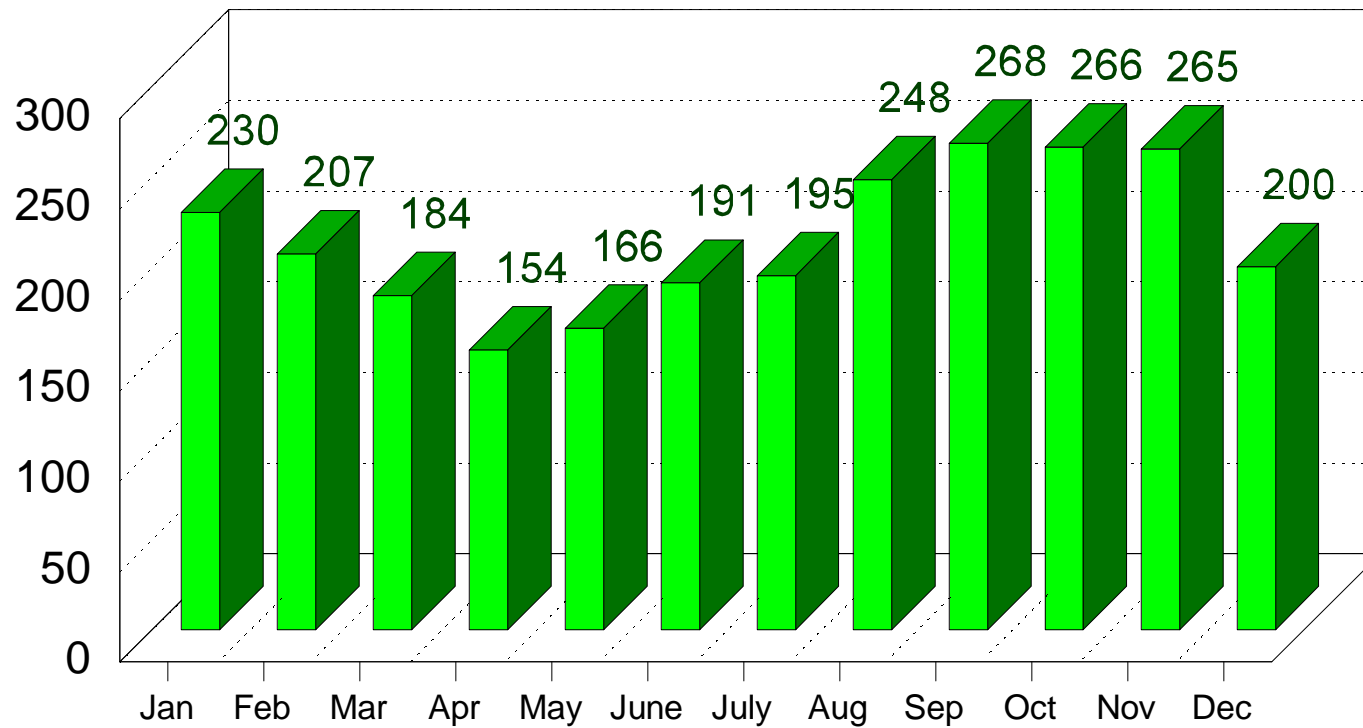
## January - December 1998

CHEYENNE	RAWLINS 2	DECATUR 5	NORTON 1	PHILLIPS 1	SMITH 1	JEWELL 3	REPUBLIC 4	WASHINGTON	MARSHALL 6	NEMAHA	BROWN 9	DONIPHAN 4			
SHERMAN 4	THOMAS 20	SHERIDAN	GRAHAM 1	ROOKS 6	OSBORNE 2	MITCHELL 17	CLOUD 14	CLAY 4	POTTAWA-TOMIE 21	JACKSON 7	ATCHISON 25	JEFF-ERSON 9	LEAVEN-WORTH 95	WYAN-DOTTE 955	
WALLACE	LOGAN	GOVE 1	TREGO 4	ELLIS 62	RUSSELL 4	LINCOLN 2	OTTAWA 4	DICKINSON 23	GEARY 363	WABAUNSEE 3	SHAWNEE 429	MORRIS 4	OSAGE 12	DOUGLAS 236	JOHNSON 351
GREELEY 2	WICHITA 3	SCOTT 2	LANE	NESS 2	RUSH 3	BARTON 24	ELLSWORTH 3	SALINE 107	MCPHERSON 28	MARION 2	CHASE 1	LYON 57	OSAGE 12	FRANKLIN 41	MIAMI 19
HAMILTON	KEARNEY 8	FINNEY 99	HODGEMAN 3	PAWNEE 7	STAF-FORD 4	RENO 97	EDWARDS 1	HARVEY 48	BUTLER 53	GREENWOOD 2	WOODSON 9	ANDERSON 8	COFFEY 8	FRANKLIN 41	LINN 7
STANTON 2	GRANT 8	HASKELL 2	GRAY 2	FORD 85	KIOWA 1	PRATT 9	KINGMAN 4	SEDGWICK 1414	ELK 2	WILSON 5	ALLEN 36	ANDERSON 8	COFFEY 8	FRANKLIN 41	BOURBON 20
MORTON 1	STEVENS 1	SEWARD 26	MEADE 2	CLARK	COMANCHE	BARBER 2	HARPER 5	SUMNER 30	COWLEY 71	ELK 2	WILSON 5	NEOSHO 5	COFFEY 8	FRANKLIN 41	CRAWFORD 67
										CHAUTAUQUA 2	MONT-GOMERY 54	LABETTE 23	COFFEY 8	FRANKLIN 41	CHEROKEE 6

**TOTAL 5446**

# Gonorrhoea Morbidity

January - December 1998

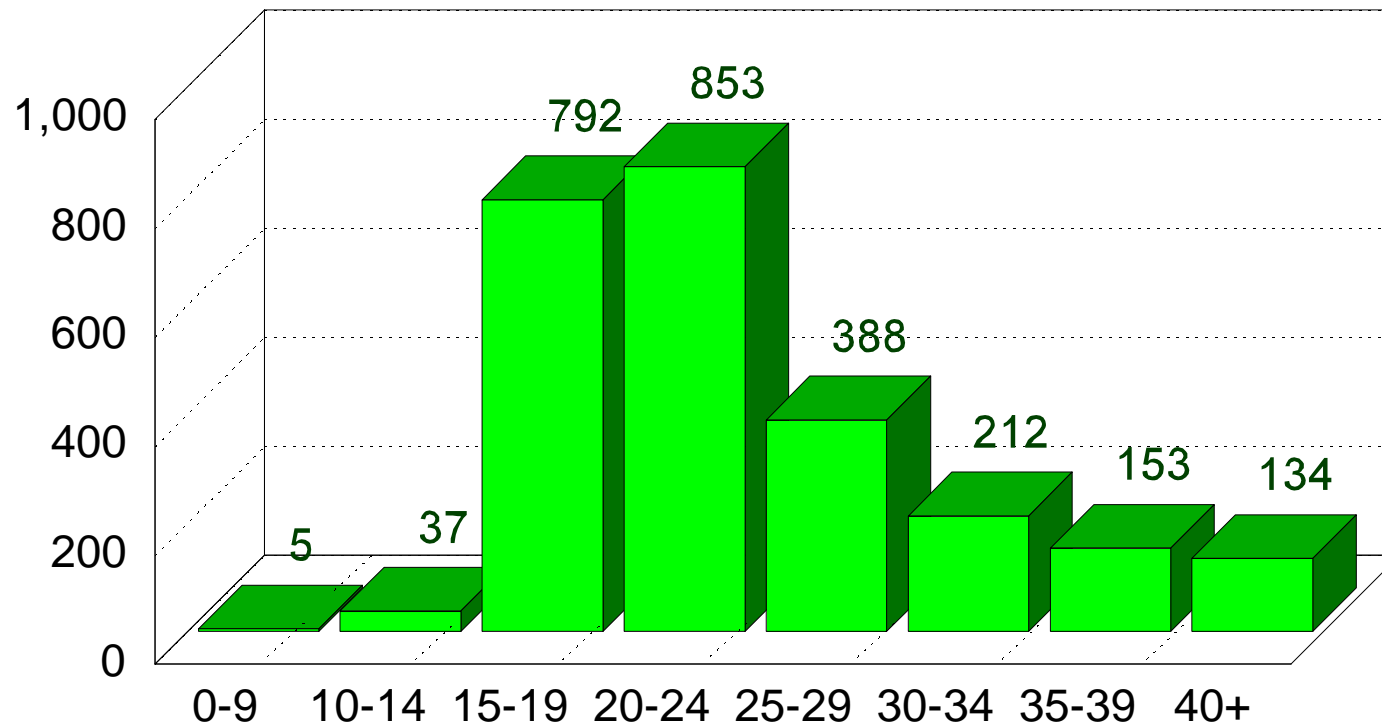


Total 2574

# Gonorrhea By Age

January - December 1998

---



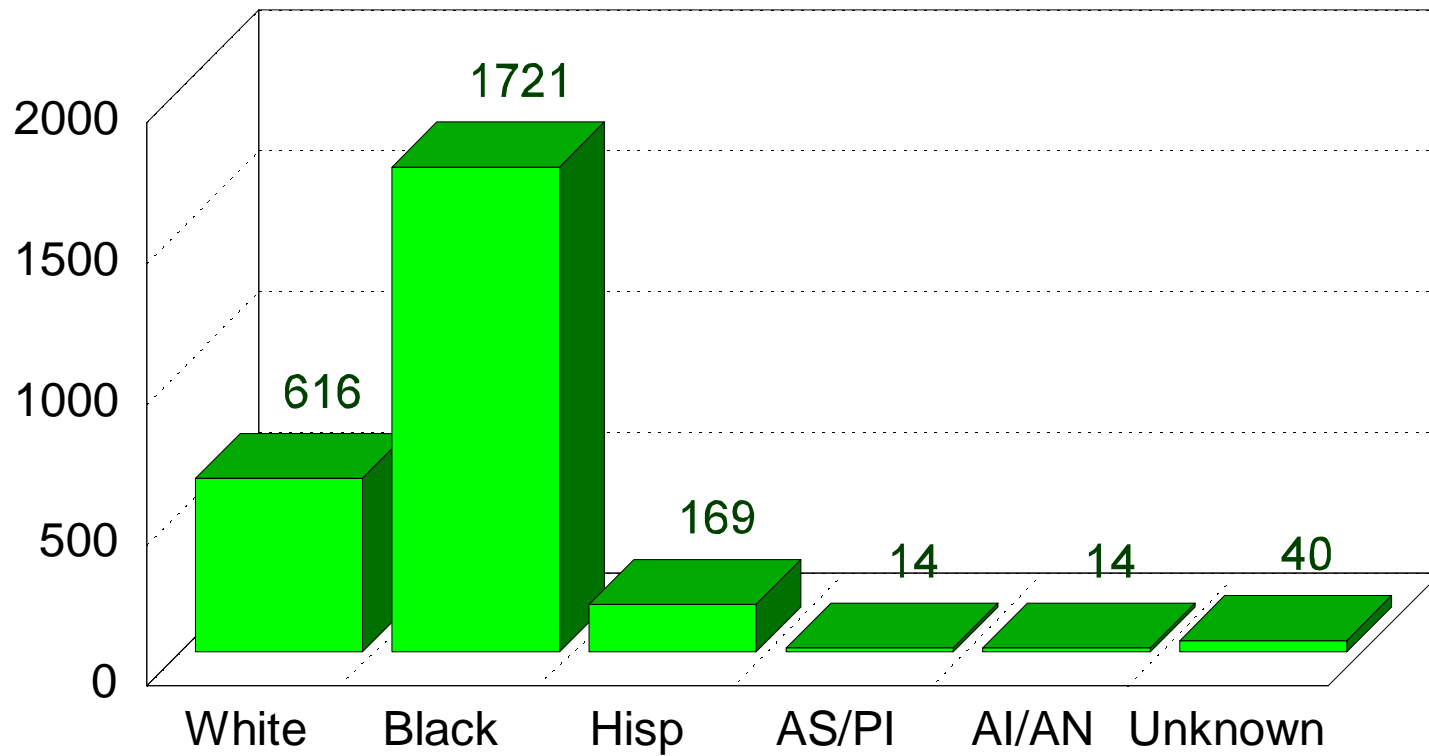
Total 2574



# Gonorrhea By Race

January - December 1998

---

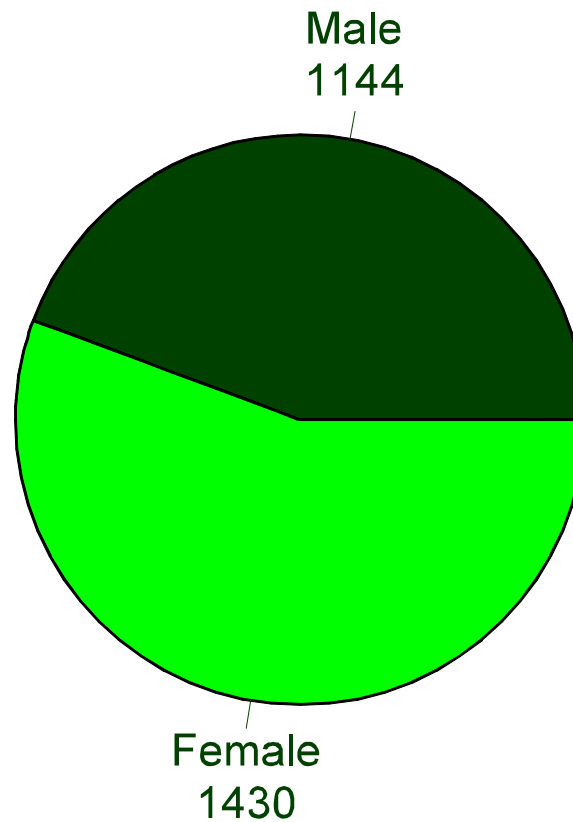


Total 2574

# Gonorrhea By Sex

January - December 1998

---

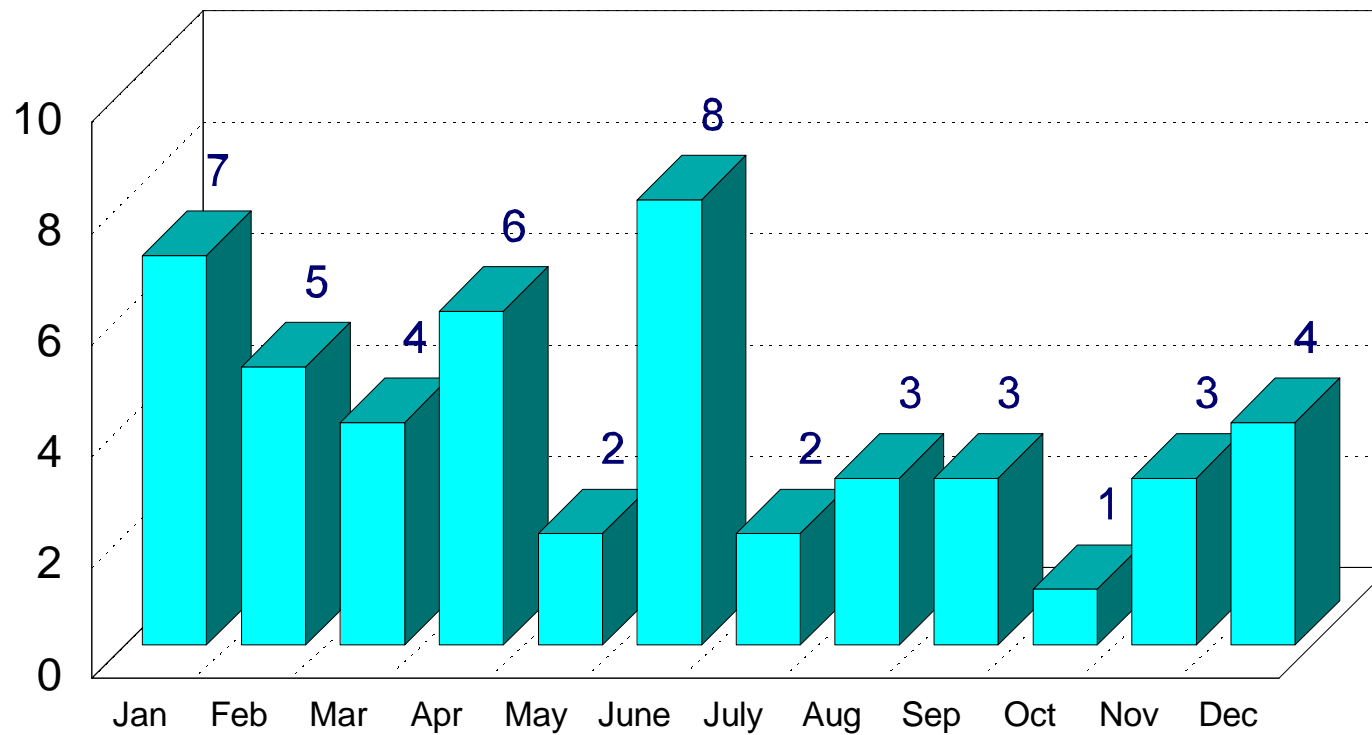


Total 2574



# Early Syphilis Morbidity

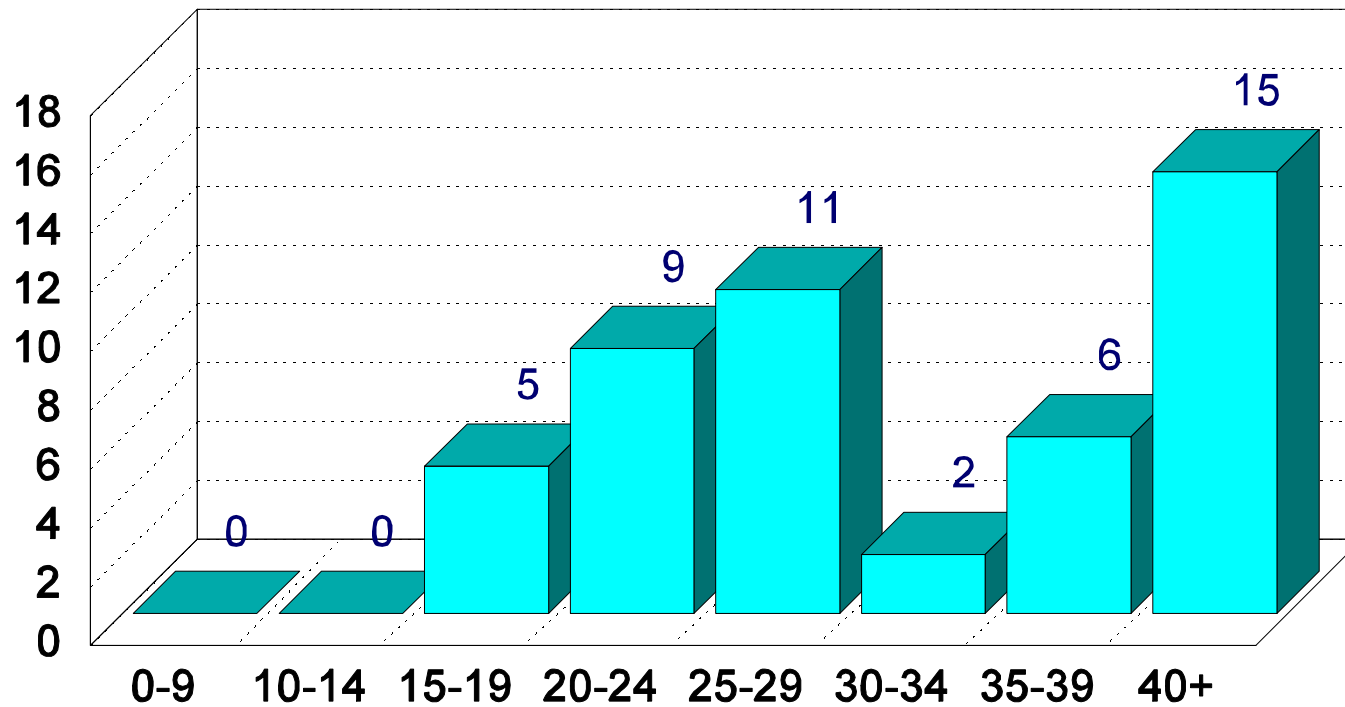
January - December 1998



Total 48

# Early Syphilis By Age

January - December 1998

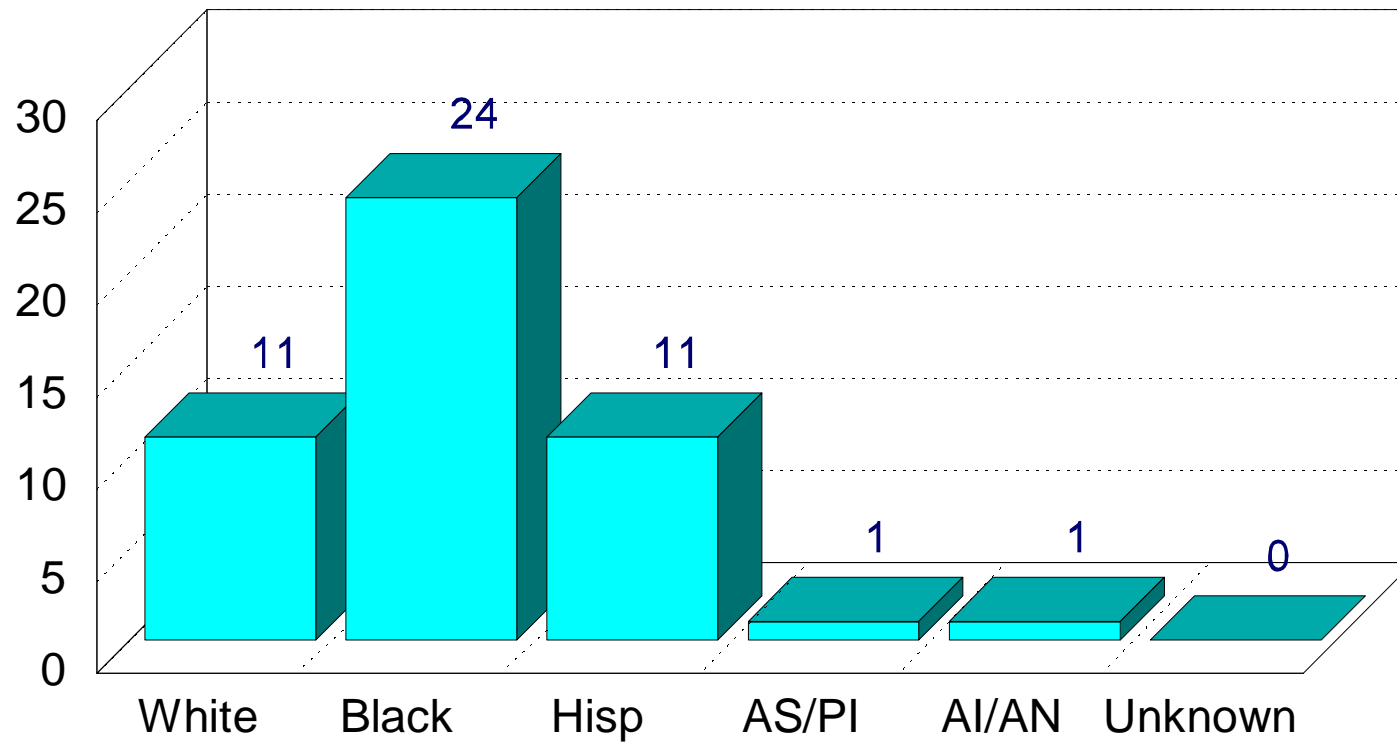


Total 48

# Early Syphilis By Race

January - December 1998

---

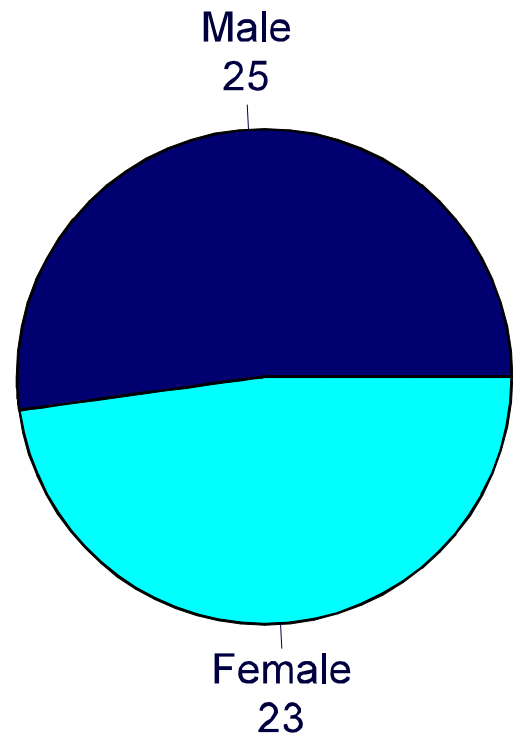


Total 48

# Early Syphilis By Sex

January - December 1998

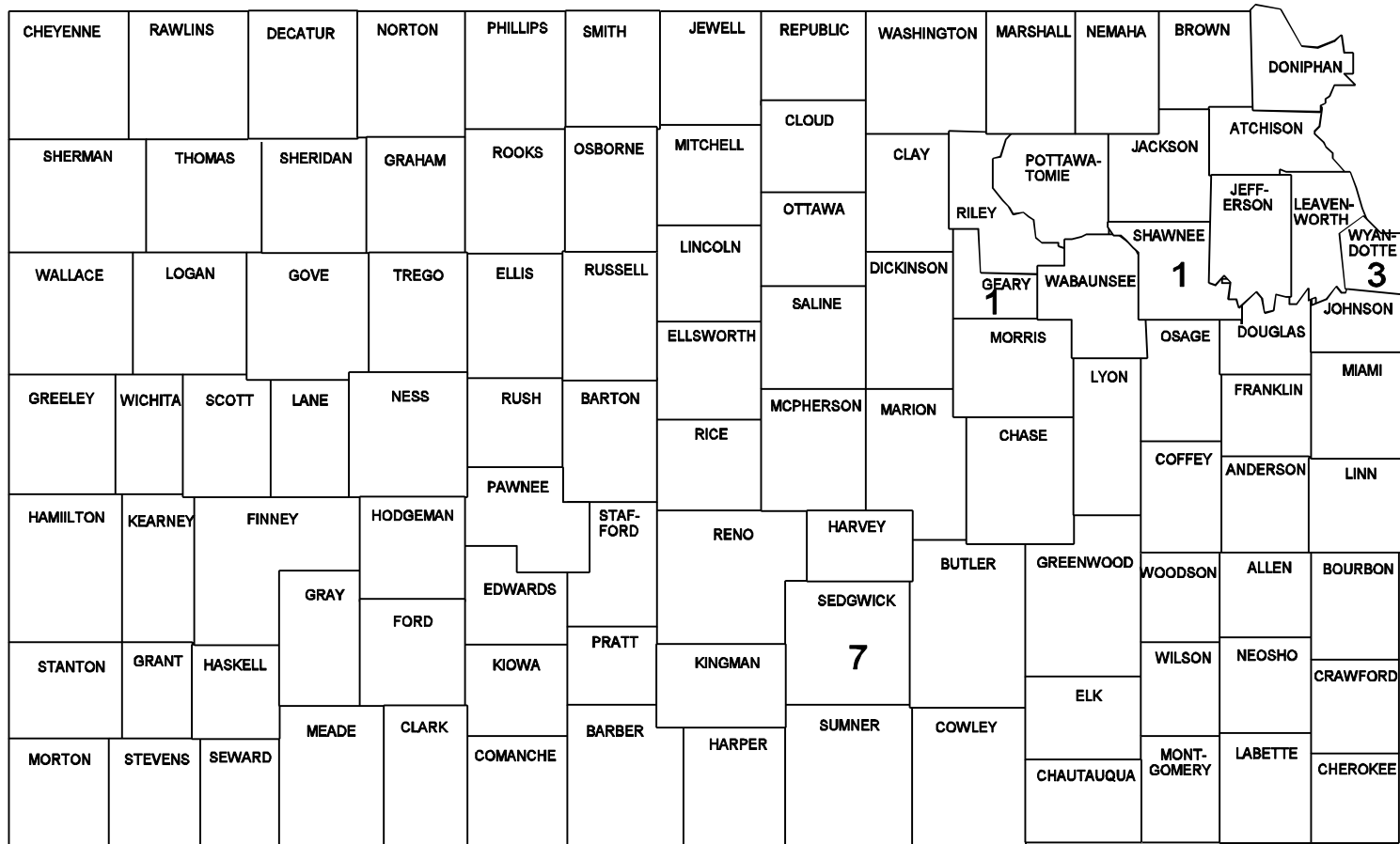
---



Total 48

# PRI AND SEC SYPHILIS

## January - December 1998

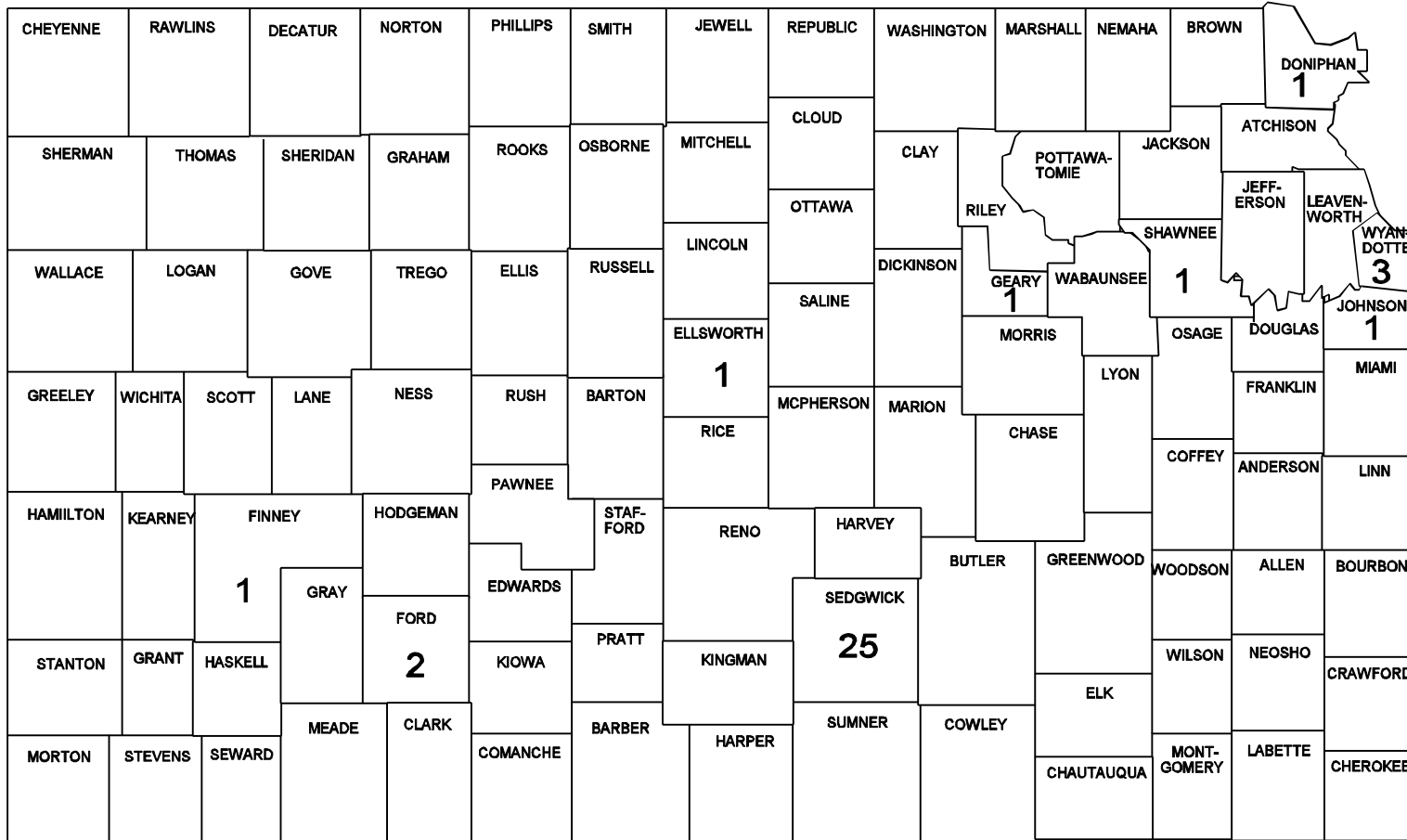


**TOTAL 12 CASES**



# EARLY LATENT SYPHILIS

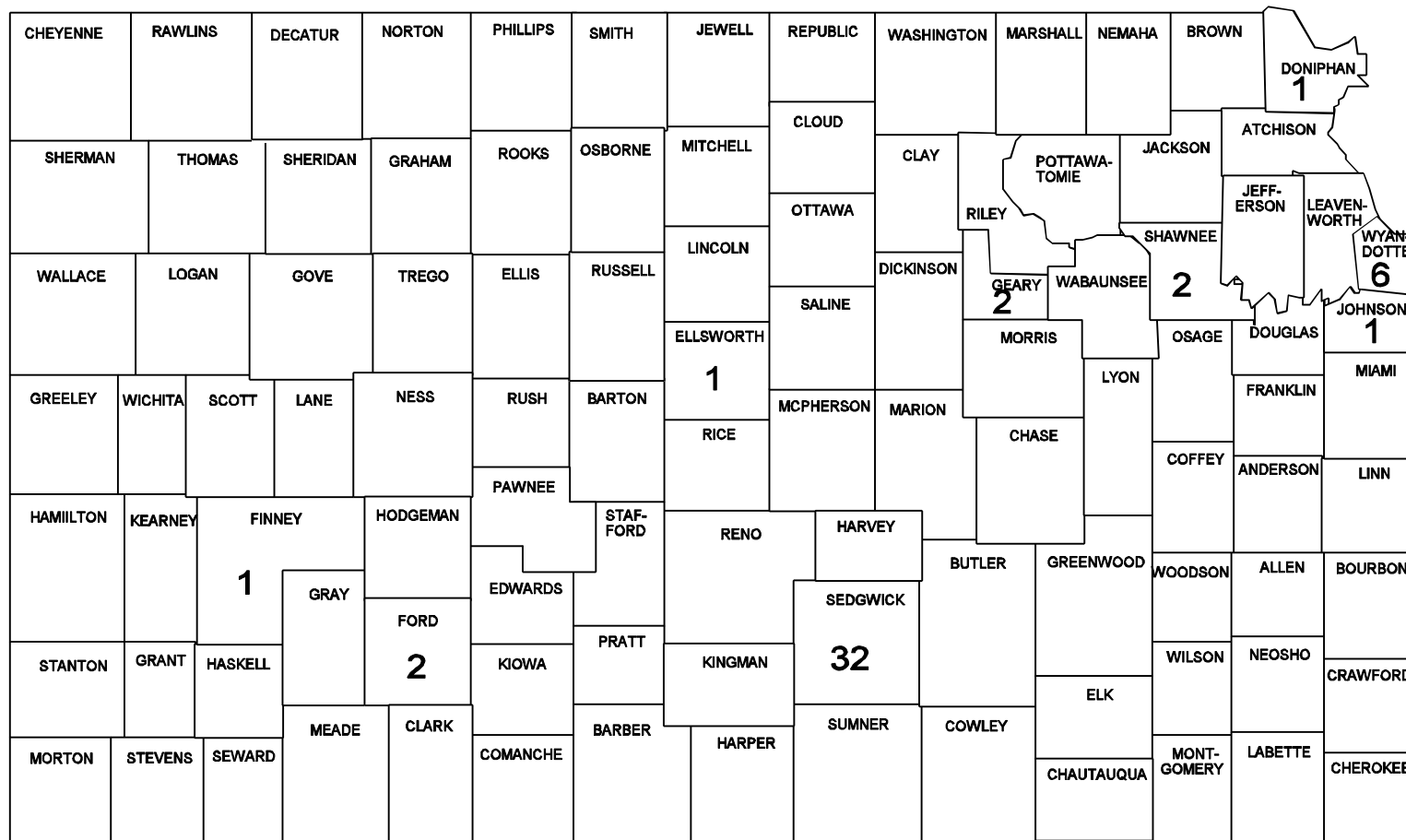
## January - December 1998



**TOTAL 36 CASES**

# EARLY SYPHILIS

## January - December 1998



**TOTAL 48 CASES**

**SEXUALLY TRANSMITTED DISEASE MORBIDITY BY COUNTY  
REPORT PERIOD: JANUARY - DECEMBER, 1998**

COUNTY	PRI & SEC SYPHILIS	EARLY LATENT SYPHILIS	OTHER SYPHILIS	GONOR- RHEA	CHLA- MYDIA	CHAN- CROID	LGV	NSU	NSV
ALLEN				1	36				
ANDERSON					8				
ATCHISON			1	5	25				
BARBER					2				
BARTON				6	24				
BOURBON				3	20				
BROWN				2	9				
BUTLER			1	15	53			2	
CHASE					1				
CHAUTAUQUA									
CHEROKEE				2	6				
CHEYENNE									
CLARK									
CLAY				1	4				
CLOUD				3	14				
COFFEY					8				

**SEXUALLY TRANSMITTED DISEASE MORBIDITY BY COUNTY**  
**REPORT PERIOD: JANUARY - DECEMBER, 1998**

COUNTY	PRI & SEC SYPHILIS	EARLY LATENT SYPHILIS	OTHER SYPHILIS	GONOR- RHEA	CHLA- MYDIA	CHAN- CROID	LGV	NSU	NSV
COMANCHE									
COWLEY				4	71			1	
CRAWFORD				6	67				
DECATUR					5				
DICKINSON				1	23				
DONIPHAN		1		2	4				1
DOUGLAS				88	236			3	1
EDWARDS					1				
ELK					2				
ELLIS			1	5	62				
ELLSWORTH		1			3				
FINNEY		1	5	15	99				
FORD		2	3	12	85				
FRANKLIN				2	41			1	
GEARY	1	1	4	147	363				1
GOVE				1	1				

**SEXUALLY TRANSMITTED DISEASE MORBIDITY BY COUNTY  
REPORT PERIOD: JANUARY - DECEMBER, 1998**

COUNTY	PRI & SEC SYPHILIS	EARLY LATENT SYPHILIS	OTHER SYPHILIS	GONOR- RHEA	CHLA- MYDIA	CHAN- CROID	LGV	NSU	NSV
GRAHAM					1				
GRANT					8				
GRAY				1	2				
GREELEY					2				
GREENWOOD					2				
HAMILTON									
HARPER				1	5				
HARVEY			1	11	48				
HASKELL					2				
HODGEMAN					3				
JACKSON					7				
JEFFERSON				1	9				
JEWELL					3				
JOHNSON		1	2	135	351			5	2
KEARNY					8				

KINGMAN					4				
---------	--	--	--	--	---	--	--	--	--

**SEXUALLY TRANSMITTED DISEASE MORBIDITY BY COUNTY  
REPORT PERIOD: JANUARY - DECEMBER, 1998**

COUNTY	PRI & SEC SYPHILIS	EARLY LATENT SYPHILIS	OTHER SYPHILIS	GONOR- RHEA	CHLA- MYDIA	CHAN- CROID	LGV	NSU	NSV
KIOWA					1				
LABETTE				12	23				
LANE									
LEAVENWORTH			2	20	95			4	1
LINCOLN					2				
LINN				4	7				
LOGAN									
LYON				7	57				
MARION					2				
MARSHALL					6				
MCPHERSON			1	6	28				
MEADE					2				
MIAMI				6	19				
MITCHELL				1	17				

MONTGOMERY				27	54				
MORRIS				1	4				

**SEXUALLY TRANSMITTED DISEASE MORBIDITY BY COUNTY  
REPORT PERIOD: JANUARY - DECEMBER, 1998**

COUNTY	PRI & SEC SYPHILIS	EARLY LATENT SYPHILIS	OTHER SYPHILIS	GONOR- RHEA	CHLA- MYDIA	CHAN- CROID	LGV	NSU	NSV
MORTON					1				
NEMAHA									
NEOSHO				5	5				
NESS					2				
NORTON					1			2	4
OSAGE				2	12				
OSBORNE					2				
OTTAWA					4				
PAWNEE				1	7				
PHILLIPS					1				
POTTAWATOMIE				1	21				
PRATT			1		9				
RAWLINS					2				

RENO			2	23	97			7	4
REPUBLIC					4				
RICE			1	3	15			1	1

**SEXUALLY TRANSMITTED DISEASE MORBIDITY BY COUNTY  
REPORT PERIOD: JANUARY - DECEMBER, 1998**

COUNTY	PRI & SEC SYPHILIS	EARLY LATENT SYPHILIS	OTHER SYPHILIS	GONOR- RHEA	CHLA- MYDIA	CHAN- CROID	LGV	NSU	NSV
RILEY				35	186				
ROOKS					6				
RUSH					3				
RUSSELL			1		4				
SALINE				48	107				
SCOTT					2				
SEDGWICK	7	25	8	753	1414			115	
SEWARD			1	5	26				
SHAWNEE	1	1	8	264	429			2	
SHERIDAN									
SHERMAN				4	4				
SMITH					1				



STAFFORD				2	4				
STANTON			1		2				
STEVENS					1				
SUMNER				12	30				

**SEXUALLY TRANSMITTED DISEASE MORBIDITY BY COUNTY  
REPORT PERIOD: JANUARY - DECEMBER, 1998**

COUNTY	PRI & SEC SYPHILIS	EARLY LATENT SYPHILIS	OTHER SYPHILIS	GONOR- RHEA	CHLA- MYDIA	CHAN- CROID	LGV	NSU	NSV
THOMAS				4	20				
TREGO				2	4				
WABAUNSEE					3				
WALLACE				2					
WASHINGTON									
WICHITA					3				
WILSON				1	5				
WOODSON				1	9				
WYANDOTTE	3	3	14	852	955	1		214	26
***** **									
<b>TOTAL</b>	12	36	58	2574	5446	1		357	41