

FACT CHECK

SEXUAL VIOLENCE & CHRONIC HEALTH CONDITIONS

IN THE CONTEXT OF THIS DATA...

Sexual violence is if, in your lifetime, you have experienced **unwanted sex** including someone putting anything into your vagina, anus, or mouth or making you do these things to them after you said or showed that you didn't want to. This also includes times when you were **unable to consent**, for example, you were drunk or asleep, or you thought you would be hurt or punished if you refused.

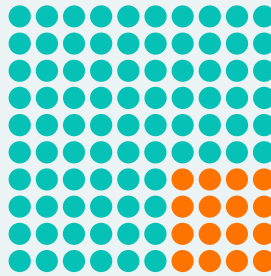
PREVALENCE OF SEXUAL VIOLENCE

~184,000
OF KANSAS ADULTS EVER EXPERIENCED SEXUAL VIOLENCE.



8.4% OF KANSAS ADULTS

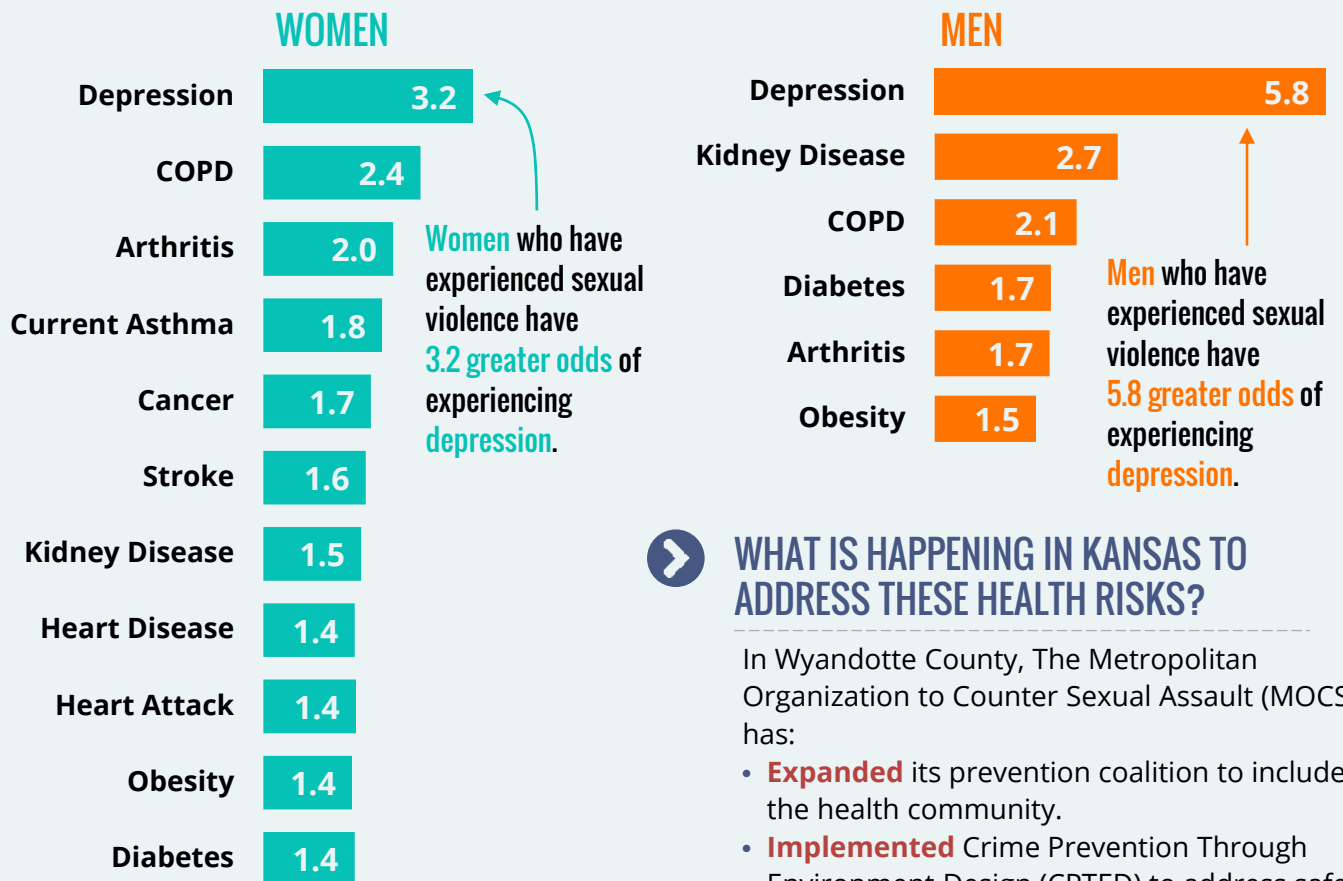
85% OF SEXUAL VIOLENCE VICTIMS WERE FEMALE AND 15% WERE MALE.



KANSAS ADULTS WHO IDENTIFIED AS LESBIAN, GAY, OR BISEXUAL HAD A

3.2 GREATER ODDS OF EXPERIENCING SEXUAL VIOLENCE.

KANSAS ADULTS WHO HAVE EVER EXPERIENCED SEXUAL VIOLENCE HAVE GREATER ODDS OF HAVING CHRONIC HEALTH CONDITIONS.



WHAT IS HAPPENING IN KANSAS TO ADDRESS THESE HEALTH RISKS?

In Wyandotte County, The Metropolitan Organization to Counter Sexual Assault (MOCSA) has:

- **Expanded** its prevention coalition to include the health community.
- **Implemented** Crime Prevention Through Environment Design (CPTED) to address safety and health.

WHAT CAN WE DO TO HELP?

- **SHARE** this information with others.
- **LEARN** how to respond to sexual assault survivors.
- **INCLUDE** sexual violence in your prevention efforts.
- **COLLABORATE** with others to prevent both sexual violence and chronic health conditions.