

**COMMUNITY INVOLVEMENT PLAN**

**NEODESHA REFINERY SITE  
NEODESHA, KANSAS**

**OCTOBER 2008**



**KANSAS DEPARTMENT OF HEALTH AND ENVIRONMENT  
BUREAU OF ENVIRONMENTAL REMEDIATION**

CONCURRENCE PAGE

COMMUNITY INVOLVEMENT PLAN  
NEODESHA REFINERY SITE

OCTOBER 2008

KANSAS DEPARTMENT OF HEALTH AND ENVIRONMENT

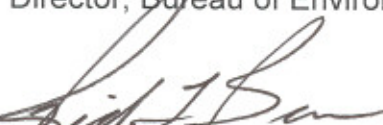
REVIEWED AND APPROVED BY:

  
Maggie Thompson  
Director of Communications

10/23/08  
Date

  
Gary Blackburn, LG  
Director, Bureau of Environmental Remediation

10/21/08  
Date

  
Rick L. Bean, LG  
Chief, Remedial Section

10/17/2008  
Date

  
E. Jean Underwood, LG  
Chief, Site Remediation Unit

10/17/2008  
Date

  
Christopher Carey  
Project Manager

10/17/2008  
Date

## TABLE OF CONTENTS

Section		Page
1.0	Overview of the Community Involvement Plan.....	5
2.0	Site Description.....	5
2.1	Site History .....	5
2.2	Site Description/Location.....	6
2.3	Site Inspections and Cleanup Activities.....	6
3.0	Community Background.....	7
3.1	Community Profile .....	7
3.2	History of Community Involvement.....	7
3.3	Key Community Concerns.....	8
3.4	Response to Community Concerns.....	10
3.5	Summary of Communication Needs.....	11
4.0	KDHE's Community Involvement Program .....	11
4.1	The Plan .....	12
4.2	Time Frame Summary for Community Involvement Activities .....	16
Figure	Site Location Map .....	17
Appendices:		
A	KDHE Contacts .....	18
B	Local Officials.....	19
C	State Elected Officials .....	20
D	Federal Elected Officials .....	21
E	Environmental and Active Citizens Groups .....	22
F	Responsible Party Representatives .....	23
G	Media Contacts .....	24
H	Meeting Locations.....	25
I	Repository Locations.....	26

## LIST OF ACRONYMS

BER	Bureau of Environmental Remediation
BP	BP Products North America, Inc.
BTEX	Benzene, toluene, ethylbenzene, and xylene
CAD	Corrective Action Decision
CAG	Community Advisory Group
CAS	Corrective Action Study
CIP	Community Involvement Plan
KDHE	Kansas Department of Health and Environment
LNAPL	Light non-aqueous phase liquid
RI	Remedial Investigation
SVOC	Semi-volatile organic compound
USD	Unified School District
VOC	Volatile organic compound

## **SECTION 1.0 - OVERVIEW OF THE COMMUNITY INVOLVEMENT PLAN**

The Kansas Department of Health and Environment (KDHE) developed this Community Involvement Plan to facilitate two-way communication between the community surrounding the Neodesha Refinery Site and KDHE and to encourage community involvement in site activities. KDHE will utilize the community involvement activities outlined in this plan to ensure that residents are informed on a routine basis and provided opportunities to be involved in the cleanup process.

This Community Involvement Plan presents a brief description of the Site (Section 2.0), provides a background of the community (Section 3.0), presents KDHE's community involvement program (Section 4.0), and provides a listing of resources available (Appendices). KDHE drew upon several information sources to develop this plan, including community interviews and site files. KDHE will oversee the implementation of the community involvement activities outlined in this Plan. This Plan outlines the general communications efforts for the Neodesha Refinery Site and may be modified and updated as necessary.

## **SECTION 2.0 - SITE DESCRIPTION**

### **2.1 Site History**

The Neodesha Refinery Site is located in Neodesha, Kansas, approximately 100 miles north of Tulsa, Oklahoma. The 320-acre site is located on the west side of town, near the Fall River. From approximately 1897 to 1970, an oil refinery operated at the site. The facility consisted of refinery-processing areas, bulk storage tanks, an oil separator pond, settling basins, and a waste disposal area. Past releases of petroleum hydrocarbons from the refinery have resulted in soil and ground water contamination within the footprint of the former refinery. Over time, contaminated ground water has migrated away from the former refinery property onto residential and industrial properties in the City of Neodesha. Contamination at the site is the subject of a Consent Agreement between the Kansas Department of Health and Environment and Amoco Oil Company (now BP Products North America, BP) (Case Number 90-E-53A) effective in 1990. Under the Consent Agreement, BP is required to investigate contamination at the site, evaluate remedial actions to address the contamination, and implement the remedial actions specified in KDHE's final Corrective Action Decision.

Contaminants present at the site include volatile organic compounds (VOCs), such as benzene, toluene, ethylbenzene, and xylene (commonly known as BTEX), semi-volatile organic compounds (SVOCs), and a number of heavy metals including lead and arsenic. Media impacted by contamination at the site include surface and subsurface soils and ground water. Light non-aqueous phase liquid and dissolved phase contaminants are present in ground water. All impacted media will be addressed through KDHE's corrective action process.

## 2.2 Site Description/Location

The Neodesha Refinery Site is divided into five main areas as shown on the Site Location Map (attached):

- ❑ **The North Site** is located in the area north of Granby Street. This is the location of a former sludge pond that has been stabilized and covered with a protective cap. The North Site is currently undeveloped.
- ❑ **The Former Tank Site** is located between Tank Avenue and Granby Street. This is where petroleum products and crude oil were stored and where a catastrophic release of ultraformate or reformate, a refined petroleum product, occurred in the late 1960s. The northern part of the Former Tank Site is undeveloped; the southern part of the Former Tank Site is the location of the City of Neodesha's softball fields, which are no longer in use.
- ❑ **The Industrial Site** is the triangular area located south of Tank Avenue between two sets of rail lines. This is the area where refining processes were centered. The Industrial Site is currently occupied by the Twin Rivers Industrial Park.
- ❑ **The South Site** is located south of Main Street. Settling basins were located in this area that were used to treat refinery waste water. Contamination is capped in one part of the South Site. Other parts of the South Site have been incorporated into the City of Neodesha's waste water treatment infrastructure.
- ❑ **The Former Oil Separator Pond Site** is located between the Industrial Site and the Fall River. This area is currently wooded and undeveloped.

## 2.3 Site Inspections and Cleanup Activities

Numerous investigations have been conducted at the Neodesha Refinery Site since it was identified in 1980. The investigations have included soil, ground water, sediment, surface water, and indoor air sampling to characterize the nature and extent of contamination at the Site; identify the sources of contamination; characterize the physical conditions of the Site such as the local hydrogeology; assess the exposure and toxicity potential to human health and the environment; and develop, evaluate, and compare cleanup alternatives for the Site. In addition, KDHE conducted several supplemental investigations to evaluate specific concerns raised by community members. Semiannual ground water and surface water monitoring has been ongoing since 1991.

The Fall River and Verdigris River are sampled twice yearly for VOCs and metals to evaluate the extent of impacts to surface water near Neodesha. The City of Neodesha obtains drinking water from the Fall River at an intake immediately downstream of the Site. Refinery-related contamination has not been detected above federal drinking water standards in water samples collected by KDHE and/or the City of Neodesha from the Neodesha Public Water Supply. KDHE is unaware of any private wells within the off-site ground water contamination plume that are used for human consumption or lawn and garden purposes.

The final remedy for the Neodesha Refinery Site has not been determined. This determination will be made based on KDHE's review of the Revised Corrective Action Study and subsequent

input from the community during the corrective action decision process. In the meantime, several interim measures have been implemented at the Neodesha Refinery Site to address immediate risks and to prevent further off-site migration of the ground water plume. Based on the early investigations, wastes (tank bottoms, solid wastes, oily wastes, tar sludges, acids, caustics and spent treating solutions) were disposed, treated, solidified, and then capped at the North Site. In addition, materials from the settling basin bottoms were removed, dried, stabilized, consolidated in Basin #4, and capped. On several occasions, hydrocarbon seep areas were excavated (e.g., near the ball fields) and disposed off-site.

Interim measures for ground water include: a trench at the former tank site originally used to inject air into the aquifer and currently used to recover petroleum product; several dual phase extraction wells that remove contaminated ground water, petroleum, and vapors; and two systems that introduce sulfate to the aquifer to encourage natural breakdown of petroleum hydrocarbons in ground water. Ground water and vapors which are recovered by the existing remedial systems are treated to remove contaminants before being released into the environment.

In addition to these active measures, deed restrictions to limit future use have been voluntarily placed on many of the properties formerly occupied by the refinery.

Recently, a determination was made to collect additional soil, ground water, surface water, and sediment samples to fill remaining data gaps. These media will be assessed during the Fall 2008 Investigation; remedial actions to comprehensively address site-wide contamination in all contaminated media will be evaluated in the Revised Corrective Action Study.

## **SECTION 3.0 - COMMUNITY BACKGROUND**

### **3.1 Community Profile**

The City of Neodesha is a small, rural community in Wilson County which was incorporated in 1871. U.S. Census Bureau data indicate the population of Neodesha dropped from 2,848 in 2000 to 2,650 in 2007. Most jobs in Neodesha are in manufacturing with the major employers being Cobalt Boats, Neodesha Plastics, Airosol, MEC, Sands Level and Tool, Millennium Rail and TCI Fabrication. According to the Kansas State Department of Education, in 2006-2007, total enrollment in Neodesha public schools (USD 461) was 815 students.

### **3.2 History of Community Involvement**

Community members are aware and generally knowledgeable about the Site; however, they are less knowledgeable about KDHE's cleanup process. During the 1980s and 1990s, KDHE participated in numerous meetings with Amoco and the City of Neodesha. In 2000, BP submitted a Communications Plan, which outlined BP's process for interacting with the public. This plan proposed numerous communication activities including but not limited to creating a public information repository; developing fact sheets and public information packets; holding meetings with community stakeholders; issuing press releases; hosting information sessions; and establishing a local office. In addition to these activities, a Remedial Advisory Board met

several times during the initial Corrective Action Study process to help identify which remedial technologies would be proposed to KDHE as part of the final site remedy.

In February 2008, KDHE met with the City of Neodesha and local community leaders to discuss the future of the Neodesha Refinery Site. In response to concerns raised during the meeting, KDHE agreed to prepare a Community Involvement Plan to outline how KDHE would obtain the community's input on future site decisions and to help resolve the community's concerns regarding the site. Subsequently, in August 2008, KDHE conducted community interviews in Wilson County to assess community concerns and attitudes regarding the Neodesha Refinery Site. Questions asked during the interviews focused on site awareness, water supply and health issues, interactions with government officials, community information, and information needs. Community interviews were conducted using an interview guide to ensure consistency of the information received. During the interview process, participants were asked a series of open-ended questions. Their responses were anonymously recorded on the information guides and were used in part to develop this Community Involvement Plan.

Interviews were conducted with 11 residents, two business entities, and one local official. Several of the interviews were conducted with more than one person present (e.g., several employees of a business, husband and wife, etc.) at the request of the participants; therefore, the actual number of opinions factored into this Community Involvement Plan is larger than reported. KDHE originally solicited input from four representatives of the City of Neodesha, two representatives of Unified School District #461, three representatives of Wilson County, as well as state elected officials representing Neodesha and Wilson County. It should be noted that these officials declined participation or were otherwise non-responsive to KDHE's requests. KDHE values the opinions of community officials and hopes to obtain their input during future implementation of the Community Involvement Plan.

As a continuation of the information gathering process, KDHE held a public meeting at the W. A. Rankin Memorial Library on August 28, 2008. The purpose of the meeting was two-fold: to gauge community interest in the site and to update the community on the site status. Approximately 60 people attended the meeting including representatives of the City of Neodesha, BP, and Unified School District #461. Overall, the concerns brought up during the meeting were consistent with those identified during the interview process, reaffirming the community's level of interest in the Neodesha Refinery Site.

### **3.3 Key Community Concerns**

The interview participants represented a diverse sample of the Neodesha population; as expected, the responses received during the interview process were also varied. The predominant theme that was reiterated during many of the interviews was concern for the health and safety of Neodesha residents, schoolchildren, and employees. In general, the following statements summarize the concerns expressed by the community.

- ❑ **The community notes the lack of community awareness of site progress, risks, and profusion of misinformation pertaining to the Site.**

- ❑ **The community wants to know what steps are being taken to clean up the Site.**
- ❑ **The community wants a clear and accurate explanation of health and ecological risks posed by contamination at the Site.**
- ❑ **The community is concerned that the responsible party has inappropriately influenced the decision-making process.**
- ❑ **The community is concerned that contamination at the Site has adversely affected property values and deters prospective residents and businesses from moving to Neodesha.**
- ❑ **The community wants a cleanup that ensures that all contamination is addressed.**
- ❑ **The community is concerned that flood events may further spread refinery contamination.**

### **3.3.1 Site Awareness**

All interview participants were aware of the Neodesha Refinery Site and have known about the refinery since they were children (if they were raised in Neodesha) or learned about it soon after moving into the community. Many of the interview participants have relatives that previously worked at the refinery. Contamination at the refinery has been more widely discussed among area residents as a result of pending litigation.

### **3.3.2 Information Needs**

While all participants knew of the Site, most felt that insufficient information has been distributed throughout the community about contamination in Neodesha. Most interviewees obtain information about the site through articles in the Neodesha Derrick, through unofficial handouts distributed at the grocery store, from the City of Neodesha, and, historically, from fact sheets distributed by BP. Several participants suggested that additional communication from state officials was needed to provide an unbiased perspective and minimize propagation of misleading information/rumors throughout the community. The community's primary information needs center around health issues and site progress although some participants indicated that more technical information should be provided.

### **3.3.3 Communication between the Public and Government Officials**

Communication between government agencies and the community has generally been limited to those members of the public who sought information about the site and through public meetings. Most interview participants were unaware of any state involvement with the community. Some participants indicated that the community has become discouraged by KDHE's historical involvement at the site and that KDHE will need to work hard to regain the trust and support of

the community. One participant indicated that the community should have some “say-so” with respect to future actions taken at the site.

### **3.3.4 Economic Concerns**

Many of the interview participants expressed concerns regarding residential and industrial property values in areas affected by contamination (above the ground water contamination plume and within the industrial park). Some suggested that environmental concerns posed by the Neodesha Refinery Site deter prospective residents from moving into the town. One business-related entity mentioned that future expansion might be limited since banks are hesitant to loan money on contaminated property. The other business-related entity cited concerns about disruptions which may be caused by future remedial actions (i.e., large-scale excavations).

### **3.3.5 Health Concerns**

Concerns regarding the health and safety of Neodesha residents were most frequently addressed in the community interviews. Many concerns focused on issues which might affect children, such as the proximity of schools with respect to the contaminant plume and whether children playing outdoors could be affected. Other health concerns include:

- Whether garden produce grown in residential areas above the ground water plume is safe;
- Whether fish caught from the Fall River and Verdigris River are safe to consume;
- Whether it is safe to live or work above the ground water contaminant plume;
- Whether it is safe to use the abandoned softball fields;
- Whether family pets can be affected by contamination; and,
- Whether Neodesha’s drinking water is safe.

Some interview participants stated their belief that the mortality and cancer rates in Neodesha are above average and attributed this to the refinery contamination. Others indicated that the existing data do not support such conclusions.

### **3.3.6 Timeliness of Cleanup**

The general consensus of the community is that the cleanup of the Neodesha Refinery Site is taking too long or is not occurring at all. Most indicated that they want more information regarding the progress of the site cleanup and some requested that the community be involved in the decision-making process for the ultimate cleanup of the site. One individual stated that the contamination did not occur overnight and, therefore, does not expect it to be cleaned up overnight.

## **3.4 Response to Community Concerns**

Prior to development of this Community Involvement Plan, KDHE met with local government officials numerous times to better understand community concerns and to obtain the City’s input on the future of the site. To make sure that the City of Neodesha is fully aware of site decisions, at their request, copies of all of KDHE’s outgoing correspondence are provided to the Neodesha

City Administrator. The August 28, 2008 public meeting was the first of many meetings intended to keep the Neodesha community apprised of current actions at the site and solicit community involvement.

KDHE remains committed to the protection of human health and the environment and will work towards this goal ensuring that the community's interests are represented. As site activities occur and information becomes available, KDHE will notify the public through site updates, press releases, and/or public meetings. Notification of public meetings will be accomplished through announcements in the newspaper. Public notices will be placed in local papers at least five days prior to the public meetings. KDHE personnel will continue to address informal inquiries from homeowners and other interested parties about the site.

KDHE's Office of Surveillance and Epidemiology is currently reviewing existing data regarding mortality and cancer rates in Neodesha; the results of the study will be provided to the community in a future fact sheet or newsletter.

### **3.5 Summary of Communication Needs**

Based on information obtained through the community interview process and the August 28, 2008, public meeting, the following list summarizes communication needs for the community surrounding the Neodesha Refinery Site:

- ❑ Opportunities for the community to better understand the complex environmental issues associated with the Site (e.g., human health and ecological risk, contaminant transport, etc.);
- ❑ Opportunities for the community to learn about the various steps in KDHE's process for contaminated sites;
- ❑ Status updates describing progress towards selection and implementation of the final Site remedy and any new interim measures or pilot testing;
- ❑ Information regarding health risks posed by the Site; and
- ❑ Timeline for Site cleanup.

## **SECTION 4.0 - KDHE'S COMMUNITY INVOLVEMENT PROGRAM**

The overall goal of KDHE's community involvement program is to promote two-way communication between citizens and the KDHE and to provide opportunities for meaningful and active involvement by the community in the cleanup process. KDHE will implement the community involvement activities described below. The following plan addresses the primary issues identified during the community involvement interview process.

## 4.1 The Plan

### Issue 1: Keeping the public informed and up to date.

Activity A: Maintain the Administrative Record.

- Objective: To provide residents with a paper trail of all documents, resources, etc. used by KDHE in reaching all decisions about the site and its cleanup.
- Method: The Administrative Record for the site is permanently maintained at the KDHE offices in Topeka, Kansas.
- Timing: The Administrative Record is established and will be continually maintained until site closure.

Activity B: Establish and maintain an Information Repository.

- Objective: To provide a convenient location where residents can go to read and copy official documents and other pertinent information about the site and KDHE activities.
- Method: The repository is a reference collection of site information containing the parts of the Administrative Record file, other site-specific information, the Community Involvement Plan, and information regarding the general remedial process. Parts of the Administrative Record file are already available at the W. A. Rankin Memorial Library.
- Timing: An information repository has already been established at KDHE's office in Topeka, Kansas. KDHE will review the local repository in the near future and will add any necessary documents. KDHE will add new documents to the information repository as they become available.

Activity C: Maintain a mailing list for the Site.

- Objective: To facilitate the distribution of site-specific information to everyone who needs or wants to be kept informed about the site.
- Method: KDHE will create a mailing list that includes all interested parties as solicited via public meetings and other community involvement activities. To the extent possible, KDHE will distribute information via email.
- Timing: KDHE will begin working on this mailing list immediately and will review/revise it periodically to keep it current.

Activity D: Prepare and distribute site fact sheets, newsletters, and/or technical summaries.

- Objective: To provide citizens with current, accurate, easy-to-read, easy-to-understand information about the Nedgesha Refinery Site.

- Method: All fact sheets, newsletters, and technical summaries will be distributed to all parties on the site mailing list. In addition, copies will be available at the information repository and in various cooperating business locations in the community.
- Timing: KDHE will prepare and distribute fact sheets, newsletters, and technical summaries as needed. To the extent possible, email will be used to disseminate information to community members.

Activity E: Provide Site information on the Internet.

- Objective: To provide key resources for searching and listing both general and specific information about KDHE's cleanup process and the Neodesha Refinery Site.
- Method: A Site Status Summary for this site can be found at on KDHE's Identified Sites List website. Dissemination of key information and site documents may be conducted via a site-specific website.
- Timing: Site Status Summaries and the site-specific website will be periodically updated.

**Issue 2: Provide adequate and meaningful opportunities for community involvement and rebuild trust between the community and KDHE.**

Activity F: Hold public meetings, forums, and/or availability sessions.

- Objective: To update the community on site developments and address community questions, concerns, ideas, and comments.
- Method: Refer to Appendix H for suggested meeting locations. KDHE will schedule, prepare for, and lead all announced meetings. KDHE will provide at least one week's notice of the scheduled meeting. The KDHE Project Manager and other appropriate KDHE staff will attend.
- Timing: The public meeting is required during the draft Corrective Action Decision comment period (see below). KDHE will hold other public meetings, forums, and/or availability sessions as appropriate.

Activity G: Make informal visits to the community.

- Objective: To help keep community members informed about the Site, while providing KDHE with feedback about Site activities and the community's opinions.
- Method: KDHE will establish a presence in the community through informal, often unscheduled visits to talk spontaneously with local residents.
- Timing: Throughout the entire cleanup process.

Activity H: Establishment of a Community Advisory Group.

- Objective: To provide citizens with a meaningful way to become actively involved, and to provide KDHE with a viable means of discussing citizen concerns and attitudes.
- Method: KDHE will encourage formation of a Community Advisory Group and provide support as appropriate to facilitate its functions. KDHE will provide administrative support but will not be an active member.
- Timing: KDHE will select a Community Advisory Group administrator from the community. The Community Advisory Group leader will be responsible for selecting other members of the Community Advisory Group. Ideally, the Community Advisory Group will be formed prior to the issuance of the Revised Corrective Action Study.

Activity I: Solicit comments during a Public Comment Period.

- Objective: To give community members an opportunity to review and comment on the draft Corrective Action Decision. This provides the citizens with meaningful involvement in the process and also provides KDHE with valuable information for use in making decisions.
- Method: KDHE will announce the comment period in local newspapers and KDHE fact sheets; announcements will include particulars on duration, how to make comments, where to submit comments, etc. KDHE will solicit comments on the draft Corrective Action Decision.
- Timing: The comment period will be announced in conjunction with the issuance of the draft Corrective Action Decision and will last a minimum of 30 days.

Activity J: Prepare and issue a Responsiveness Summary.

- Objective: To summarize comments received during the comment period, to document how KDHE has considered those comments during the decision-making process, and to provide responses to major comments.
- Method: KDHE will prepare a Responsiveness Summary as a section of the final Corrective Action Decision. The Responsiveness Summary will include four sections: 1. Overview; 2. Background on Community Involvement; 3. Summary of comments received and KDHE's responses; 4. Corrective Action Plan/Corrective Action concerns. All information, both technical and non-technical, will be conveyed in a manner that is easily understood.
- Timing: KDHE will issue the Responsiveness Summary as part of the final Corrective Action Decision.

Activity K: Revise the Community Involvement Plan.

- Objective: To identify and address community needs, issues, or concerns regarding the site or the cleanup remedy that are not currently addressed in this Community Involvement Plan.
- Method: The Revised Community Involvement Plan will update the information presented in the previous version of the Community Involvement Plan.
- Timing: KDHE will revise the Community Involvement Plan as warranted.

### **Issue 3: Educate the community on environmental issues affecting Neodesha.**

Activity L: Hold educational workshops.

- Objective: To provide the community with the opportunity to gain knowledge about important site-related technical and administrative concepts (e.g., contaminant transport, contaminant types, risk, cleanup process, remedial systems, etc.)
- Method: KDHE will plan, schedule, announce, and conduct informal educational sessions for community members to learn about specific topics from KDHE and other experts. KDHE will work with local residents for scheduling, location, and so on. The KDHE project manager and the appropriate topic expert will be present.
- Timing: Now until issuance of the final Corrective Action Decision and beyond as needed.

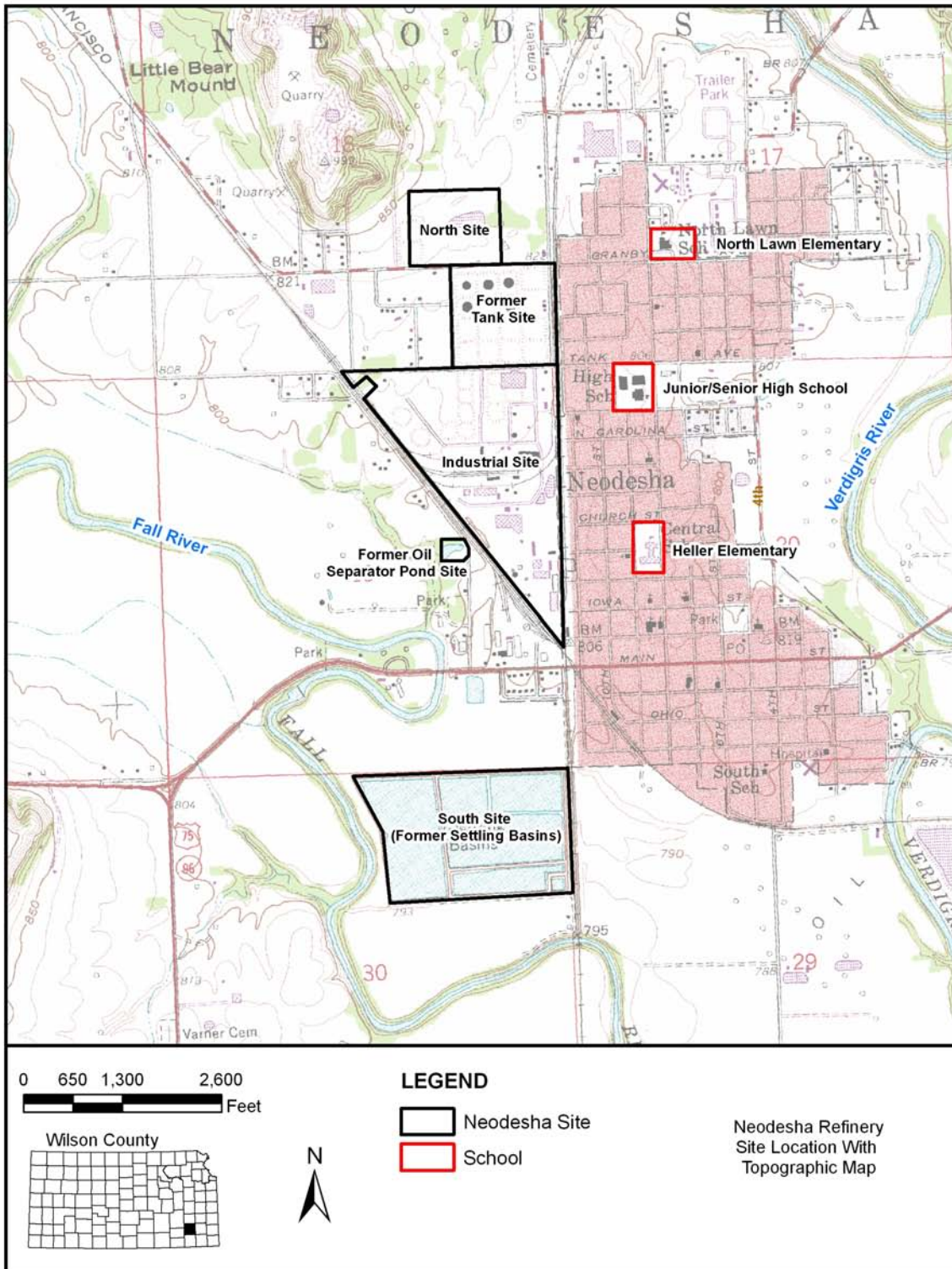
Activity M: Conduct special events.

- Objective: To educate citizens, add a sense of closure, highlight a major event or milestone, recognize significant citizen or PRP activity, etc.
- Method: To be determined.
- Timing: To be determined.

## 4.2 Time Frame Summary for Community Involvement Activities

ACTIVITY	TIME FRAME
Establish and maintain the Administrative Record	Established, update as needed
Establish and maintain Information Repositories	Established, update as needed
Maintain a mailing list for the Site	Ongoing
Prepare and distribute site fact sheets and technical summaries	As needed, at least annually
Provide Site information on the Identified Sites List and via a site-specific website	Status summaries are available on the Identified Sites List; a site-specific website may be established and updated as needed
Hold public meeting	During the public comment period for the draft Corrective Action Decision
Hold public availability sessions and forums	As needed
Make informal visits to community	As needed
Encourage formation of a Community Advisory Group	Ongoing
Solicit comments during the Public Comment Period	In conjunction with issuance of the draft Corrective Action Decision
Prepare and issue a Responsiveness Summary	Following public comment periods
Revise the Community Involvement Plan	As needed
Hold educational workshops	As needed
Conduct special events	As needed

# SITE LOCATION MAP



## APPENDIX A KDHE CONTACTS

**Chris Carey, Project Manager**  
Site Remediation Unit/Remedial Section  
Bureau of Environmental Remediation  
Kansas Department of Health and  
Environment  
1000 SW Jackson Street, Suite 410  
Topeka, KS 66612

Phone: 785-296-0225  
E-mail: ccarey@kdhe.state.ks.us

**Rick L. Bean, LG, Section Chief**  
Remedial Section  
Bureau of Environmental Remediation  
Kansas Department of Health and  
Environment  
1000 SW Jackson Street, Suite 410  
Topeka, KS 66612

Phone: 785-296-1675  
E-mail: rbean@kdhe.state.ks.us

**Maggie Thompson**  
Director of Communications  
Kansas Department of Health and  
Environment  
1000 SW Jackson Street, Suite 540  
Topeka, KS 66612

Phone: 785-296-5795  
E-mail: mthompson@kdheks.gov

**E. Jean Underwood, LG, Unit Chief**  
Site Remediation Unit/Remedial Section  
Bureau of Environmental Remediation  
Kansas Department of Health and  
Environment  
1000 SW Jackson Street, Suite 410  
Topeka, KS 66612

Phone: 785-291-3255  
E-mail: junderwood@kdhe.state.ks.us

**Gary Blackburn, LG, Bureau Director**  
Bureau of Environmental Remediation  
Kansas Department of Health and  
Environment  
1000 SW Jackson Street, Suite 410  
Topeka, KS 66612

Phone: 785-296-1662  
E-mail: gblackburn@kdhe.state.ks.us

## APPENDIX B LOCAL OFFICIALS

### *City Officials*

**Casey Lair**, Mayor  
**Julie Nichol**, Councilperson  
**Jim Schuessler**, Councilperson  
**J. D. Cox**, City Administrator

1407 N 8<sup>th</sup> Street  
Neodesha, KS 66757  
Phone: 620-325-2828

**Charlie Reynolds**, Chief  
Neodesha Fire Department  
112 S. 4<sup>th</sup> Street  
Neodesha, KS 66757  
Phone: 620-235-2642

**Danny Thayer**, Chief  
Neodesha Police Department  
108 S. 4<sup>th</sup> Street  
Neodesha, KS 66757  
Phone: 620-325-3031

### *Wilson County Officials*

**Gary Fitzmorris**, 1<sup>st</sup> District Commissioner  
**Garry Lambert**, 2<sup>nd</sup> District Commissioner  
**Roy Varner**, 3<sup>rd</sup> District Commissioner

615 Madison Street  
Fredonia, KS 66736  
Phone: 620-378-2502

**Todd Durham**, Administrator  
Wilson County Health Department  
421 N. 7<sup>th</sup> Street  
Fredonia, KS 66736  
Phone: 620-378-445

## **APPENDIX C STATE ELECTED OFFICIALS**

**Governor Kathleen Sebelius**  
Office of the Governor  
Capitol, 300 SW 10th Ave., Ste. 212S  
Topeka, KS 66612

Phone: 785-296-3232

### *State Senate*

#### **Senator Derek Schmidt**

Capitol, 300 SW 10<sup>th</sup> Ave., Suite 390 E  
Topeka, KS 66612  
Phone: 785-296-2497  
Email: schmidt@senate.state.ks.us

P.O. Box 747  
Independence, KS 67301  
Phone: 620-331-1800

### *State House of Representatives*

#### **Representative Forrest Knox**

Capitol, 300 SW 10<sup>th</sup> Ave., Suite 390 E  
Topeka, KS 66612  
Phone: 785-296-7678  
Email: knox@house.state.ks.us

17120 Udall Road  
Altoona, KS 66710  
Phone: 785-783-5564

## **APPENDIX D FEDERAL ELECTED OFFICIALS**

### *U.S. Senate*

#### **Senator Pat Roberts**

109 Hart Senate Office Building  
Washington, DC 20510-1605  
Phone: 202-224-4774

155 N Market Street, Suite 120  
Wichita, KS 67202  
Phone: 316-263-0416

#### **Senator Sam Brownback**

303 Hart Senate Office Building  
Washington, D.C. 20510  
Phone: 202-224-6521

1001-C N. Broadway  
Pittsburg, KS 66762  
Phone: 620-231-6040

### *U.S. House of Representatives*

#### **Congresswoman Nancy Boyda**

1711 Longworth House Office Building  
Washington, D.C. 20515  
Phone: 202-225-6601

701 N. Broadway, Suite A  
Pittsburg, KS 66762  
Phone: 620-231-3011

## **APPENDIX E ENVIRONMENTAL AND ACTIVE CITIZENS GROUPS**

### **Neodesha Environmental Awareness Team**

Contact: Lucille Campbell

Phone: 620-325-3494

### **Lions Club**

Contact: Marc Shiverdecker, President

Phone: 620-325-2480

### **Rotary Club**

Contact: Daryl Pruter, President

Phone: 620-325-2610

## **APPENDIX F RESPONSIBLE PARTY REPRESENTATIVES**

**Tammy Brendel**  
Site Manager, EBM  
BP Products North America  
1000 North Sterling Road  
P.O. Box 8507  
Sugar Creek, MO, 64054

Phone: 816-836-6044  
Email: [brendelta@bp.com](mailto:brendelta@bp.com)

**Norm Bennett**  
Resident Contract Project Manager  
722 Main Street  
Neodesha, KS 66757

Phone: 620-325-5521  
Email: [bpneody@terraworld.net](mailto:bpneody@terraworld.net)

**Ron Rybarczyk, Director**  
Government & Public Affairs  
BP America Inc.  
4101 Winfield Road  
1 West, 106B  
Warrenville, IL 60555

Phone: 630-821-3039  
Email: [rybarczyk@bp.com](mailto:rybarczyk@bp.com)

## APPENDIX G MEDIA CONTACTS

### *Television Stations:*

**KOAM (CBS Affiliate)**  
2950 NE Highway 69  
P.O. Box 659  
Pittsburg, KS 66762-0659  
Phone: 620-231-0400

**KFJX (Fox Affiliate)**  
2950 NE Highway 69  
P.O. Box 659  
Pittsburg, KS 66762-0659  
Phone: 620-230-0565

**KTUL (ABC Affiliate)**  
PO Box 8  
Tulsa, OK 74101-0008  
Phone: 918-445-8888

### *Radio Stations:*

**KGGF - 104.1 FM, KGGF – 690 AM,  
KKRK – 98.9, and KUSN - 98.1 FM**  
P.O. Box 1087  
Coffeyville, KS 67337  
620-251-3800

**KIND - 102.9 FM**  
122 W. Myrtle  
Independence, KS 67301  
Phone: (620) 331-3000

**KKOW - 860 AM**  
1162 E. Highway 126  
Pittsburg, KS 66762  
Phone: 620-231-7200

### *Newspapers:*

**Independence Daily Reporter**  
320 N 6th St  
Independence, KS 67301  
Phone: 620-331-3550

**Wilson County Citizen**  
406 N 7th St  
Fredonia, KS, 66736-1315  
Phone: 620-378-4415

**The Neodesha Derrick**  
502 Main St  
Neodesha, KS 66757  
Phone: 620-325-3000

## APPENDIX H MEETING LOCATIONS

### **W. A. Rankin Memorial Library**

Contact: Mary Meckley  
502 Indiana Street  
Neodesha, Kansas 66757  
Phone: 620-325-3275

**Wilson Medical Center**  
2600 Ottawa Road/PO Box 360  
Neodesha, KS 66757  
Phone: 620-325-2611

### **Neodesha High School Auditorium**

Contact: Daryl Pruter, Superintendent  
1001 N 8th Street  
Neodesha, KS 66757-1399  
Phone: 620-325-2610

### **Neodesha Arts Association**

Contact: Teresa Railsback  
5<sup>th</sup> and Indiana/P.O. Box 65  
Neodesha, KS 66757  
620-325-3422

### **Neodesha Civic Center/City Hall**

Contact: J.D. Cox, City Administrator  
1407 N 8<sup>th</sup> Street  
Neodesha, Kansas 66757  
Phone: 620-325-2828

# **APPENDIX I REPOSITORY LOCATIONS**

## *Local Repository*

W. A. Rankin Memorial Library  
502 Indiana  
Neodesha, Kansas  
Phone: 620-325-3275  
Hours Open to Public  
Monday – Wednesday: 9:30AM – 6:30PM  
Thursday – Friday: 9:30AM – 5:30PM  
Saturday: 9:00AM – 12:00PM

## *KDHE Administrative Record:*

Kansas Department of Health and Environment  
Bureau of Environmental Remediation  
Curtis State Office Building  
1000 SW Jackson Street, Suite 410  
Topeka, Kansas  
Phone: 785-296-1673  
Hours Open to Public:  
Monday – Friday: 8:00AM – 5:00PM