

# Newsletter

## PROVIDER SATISFACTION SURVEY

The Kansas Statewide Farmworker Health Program (KSFHP) is committed to providing its health care partners and farmworker families with the best service and quality. We are looking to examine our current performance and the best way to do this is by asking you to participate in this **'2016 Health Partner Satisfaction Survey'** and to provide us with your opinion on how we are currently performing.

The survey is completed online, has 19 questions and should take around five minutes to complete. Please remember, there are **NO** right or wrong answers. It's your honest feedback we are seeking.

The deadline to complete the survey is 5 p.m. on **Friday, July 29, 2016**. By participating in this survey you will be making an important contribution to helping KSFHP improve and serve you better.

Please click on the link to start the survey: [2016 KSFHP Satisfaction Survey](#)

Thank you in advance for your support and input. Should you have any concerns or questions about this survey, please feel free to contact Rico directly at [raguayo@kdheks.gov](mailto:raguayo@kdheks.gov) or (785) 296-8656.

## 2016 KSFHP PROVIDER AGREEMENT

If you have not submitted your agency's provider agreement this year, KSFHP is asking all providers to please sign and return the updated **KSFHP Provider Agreement** as soon as possible.

Completed and signed agreements can be faxed or emailed to your Regional Case Manager or to our main office in Topeka at:

KDHE—Kansas Statewide Farmworker Health Program  
Fax: (785) 296-1231  
Email: [ksfhp@kdheks.gov](mailto:ksfhp@kdheks.gov)

To download a copy, please visit [KSFHP Provider Agreement](#).

If you should have additional questions regarding the agreement, please do not hesitate to contact your Regional Case Manager (see contact information on page 2) or the program director.

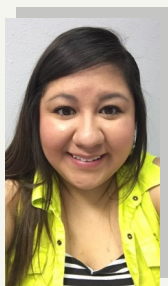
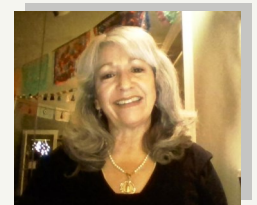
We appreciate and value the partnership we have and look forward to working with you to better serve farmworkers' health care needs.

## KSFHP ADVISORY COUNCIL

KSFHP is excited to announce some changes to the Advisory Council for the upcoming program year.

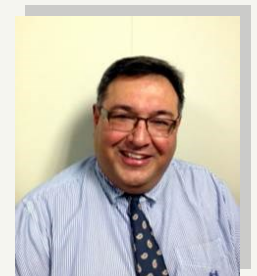
Jenny Tavares retired from the Kansas Department of Commerce and resigned from the Advisory Council in March. Jenny served on the council for more than 22 years and has been a champion for our program and farmworker health in Kansas. She is enjoying retirement and is focusing her free time teaching belly-dance.

Steve Ramirez was hired in the office of Workforce Compliance and Oversight with the Kansas Department of Commerce and joined the advisory council last month. Steve brings a wealth of knowledge and experience to the KSFHP Advisory Council and we look forward to his contributions to the program.



Ivonn Vargas, farmworker representative, has been elected by the Advisory Council to serve as Secretary. Ms. Vargas has served on the council for the past two years.

We appreciate their leadership, vision and commitment to the program. KSFHP Advisory Council meets on the second Tuesday of each month by conference call.



**Thank you for your contributions!**

**Mission Statement**—The Kansas Statewide Farmworker Health Program works to provide comprehensive primary care services to address the unique health care needs of migrant and seasonal farmworkers and their families.

**Vision Statement**—Healthy, happy, and productive farmworkers and dependents in Kansas.

## PAYMENTS FOR CLAIMS

Bills with a date of service of May 1, 2016 and after are currently being accepted. Please notify billing personnel to submit bills promptly after service to facilitate timely payment.

KSFHP understands that the recent end of the fiscal year on April 30, 2016 caused some challenges and stress for providers and KSFHP staff, so please mark your calendars that the same short-term deadline will occur again in May 2017.

All bills need to include both CPT codes and ICD 10 codes. Please include the voucher when submitting the claim. If possible, please include a print-out of the patient summary from the appointment with the claim as well. Timely submission of claims will ensure that bills can be processed and paid. Thank you in advance for your cooperation on this matter.

## KSFHP PROVIDER ORIENTATIONS AVAILABLE

If you and your staff would like to receive an orientation, please contact your Regional KSFHP Case Manager. Orientations can be provided via webinar and/or site visit and run for about one hour. Topics include funding, eligibility, voucher procedures, billing, eligibility, etc. Also, if your clinic needs brochures or has program questions, please contact your Regional Case Manager.

Please join us for an upcoming provider orientation!

**WEBINAR:** **Statewide KSFHP Provider Orientation**

July 26, 2016 from 12 Noon—1 PM.

To register, please click-on the link: [KSFHP Provider Orientation](#)

## FARMWORKER HEALTH RESOURCES

The **National Center for Farmworker Health (NCFH)** is dedicated to improving the health status of farmworker families by providing information services, training and technical assistance, and a variety of products to community and migrant health centers nationwide, as well as organizations, universities, researchers and individuals involved in farmworker health.

If you would like more information and available resources, please visit their website at [NCFH Archived Webinars](#).

**Migrant Clinicians Network** provides a bridge to case management, support, technical assistance and professional development to clinicians in Federally Qualified Health Centers (FQHCs) and other health care delivery sites with the ultimate purpose of providing quality health care that increases access and reduces disparities for migrant farmworkers and other mobile underserved populations.

For more information, please visit their website at [Migrant Clinicians Network](#).

KSFHP was featured in the MCN spring newsletter on 'Building Relationships: Referrals for Specialty Care in Kansas' (page 2). The article can be viewed at [Migrant Clinician Streamline Spring 2016](#).



# KSFHP STAFF

**Kendra Baldrige,**  
Program Director

Email [kbaldridge@kdheks.gov](mailto:kbaldridge@kdheks.gov)  
Office (785) 296-8113

**Rico B Aguayo, Manager**

Email [raguayo@kdheks.gov](mailto:raguayo@kdheks.gov)  
Office (785) 296-8656

**Heather Driver,**  
Administrative Specialist

Email [hdriver@kdheks.gov](mailto:hdriver@kdheks.gov)  
Office (785) 296-6028

## REGIONAL CASE MANAGERS

**WESTERN**—English/Low German  
**Tina Guenther**

Email [tguenther@kdheks.gov](mailto:tguenther@kdheks.gov)  
Office (620) 675-8191  
Cell (620) 290-0133  
Fax (620) 675-2236

**WESTERN**—English/Spanish  
**Mary Marquez**

Email [mmarquez@kdheks.gov](mailto:mmarquez@kdheks.gov)  
Office (620) 225-0596  
Cell (620) 253-6104  
Fax (620) 225-3731

**CENTRAL**—English/Spanish  
**Patricia Fernandez**

Email [pfernandez@kdheks.gov](mailto:pfernandez@kdheks.gov)  
Office (785) 296-8983  
Cell (620) 617-7428  
Fax (785) 827-1544

**EASTERN**—English/Spanish  
**Mario Gonzalez**

Email [mgonzalez@kdheks.gov](mailto:mgonzalez@kdheks.gov)  
Office (913) 677-0100  
Cell (816) 590-7577  
Fax (913) 362-8513

