



KANSAS
Statewide
Farmworker
Health Program

KS Dept of Health & Environment

1000 SW Jackson St, Ste 340
Topeka, KS 66612-1365
Telephone: (785) 296-1200
Fax: (785) 296-1231

Website: www.ksfhp.org

 www.facebook.com/ksfhp

Volume 8, Issue 1, February 2013

Kansas Statewide Farmworker Health Program (KSFHP)



Orientation to Migrant Health

Migrant Clinicians Network has designed this ***Clinician Orientation to Migration Health*** for new as well as seasoned clinicians who are interested in understanding more about the migrant population. The orientation is divided into a series of seven webinars which cover a wide breadth of knowledge and skills to help clinicians provide quality care to one of the most difficult to reach populations in the U.S.

Each module consists of a 1-hour webinar presented by experts in the field of migration health. Accompanying the webinars are topic-specific handouts as well as links and resources for those who want even more in-depth information about the topic. Emphasis is placed on practical solutions to the difficulties that arise at the intersection of migration, poverty and health. Continuing Nursing or Continuing Medical Education credits are available.

[REGISTER FOR ALL 7 WEBINARS HERE](#)

Billing Reminders

Please notify billing personnel to submit bills promptly after service to facilitate timely payment. **Bills with a date of service prior to 12/1/2012 should be submitted before February 15, 2013.** KSFHP is accepting bills for Farmworker services on 12/1/2011 or after and TB services on 7/1/2011 or after. If you have questions, please contact your Regional Case Manager or the Program Director.

Champion of Farmworker Health

Kansas Statewide Farmworker Health Program (KSFHP) recently presented the first annual Champion of Farmworker Health Award to Dr. Anita Murray-Clary, DDS of Pediatric Smiles Dental Clinic in Topeka. Dr. Murray-Clary has partnered with KSFHP to help children of farmworkers access needed dental services. Patricia Fernandez, a KSFHP case manager, nominated Dr. Murray-Clary for the award after seeing firsthand the excellent dental care that her clients were receiving. Finding providers that will work with our program to help uninsured Farmworkers can be a challenge. We are grateful to Dr. Murray-Clary for her support to KSFHP and farmworker families to ensure quality dental care.



Click the photo for more info

Pediatric Smiles is a Champion of Farmworker Health.

KSFHP Staff

Program Director
 Cyndi Treaster
ctreaster@kdheks.gov
 Office: (785) 296-8113

Administrative Specialist
 Sarah Beery
sbeery@kdheks.gov
 Office: (785) 296-6028



Regional Case Managers

Western: English/Low German
 Tina Guenther
tguenther@ummam.org
 Office: (620) 275-4970
 Cell: (620) 952-1470
 Fax: (620) 275-7026

Western: English/Spanish
 Mary Marquez
mmarquez@ummam.org
 Office: (620) 225-1873
 Cell: (620) 428-1762
 Fax: (620) 225-2422

Central: English/Spanish
 Patricia Fernandez
pfernandez@kdheks.gov
 Office: (785) 296-8983
 Cell: (620) 617-7428
 Fax: (785) 296-1231

Eastern: English/Spanish
 Kendra Baldrige
kbaldrige@kdheks.gov
 Office: (785) 296-2671
 Cell: (816) 590-7577
 Fax: (785) 296-1231

Website: www.ksfhp.org

 www.facebook.com/ksfhp



KSFHP Calendars & Brochures

KSFHP staff is in the process of distributing the 2013 calendars. This year's focus is program eligibility. If you would like calendars or brochures for your clinic or agency, please contact your Regional Case Manager (contact information is on the left hand side of this page).



Click the photo for more info

Strategic Planning

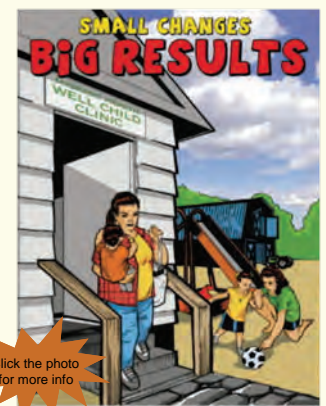
KSFHP staff and Advisory Council met in Wichita on November 27, 2012 for the annual Strategic Planning meeting. There was much discussion about plans for the coming year and beyond. It was a great time to catch up on the latest news and to brainstorm about the future of KSFHP. The work plan for 2013 was discussed and has since been finalized.



Click the photo for more info

Healthy Weight Curriculum

KSFHP staff have developed a "Healthy Weight Curriculum" to present to farmworker families in their own language. This information can be shared with individuals or groups. The curriculum includes information from www.choosemyplate.gov, a bi-lingual comic book, as well as other resources. This is a flexible program that can be beneficial to a full range of individuals. If you know of a farmworker who would benefit from this information, please contact your Regional Case Manager to set up an appointment!



Click the photo for more info