

KSFHP 2009 FARMWORKER SURVEY RESULTS

INTRODUCTION

The Kansas Statewide Farmworker Health Program (KSFHP) identified fifty questions from the Behavioral Risk Factor Surveillance System (BRFSS) to survey 584 adult farmworkers, age 18 and over in Kansas in 2009. The BRFSS is a state-based system of health surveys that generate information about health risk behaviors, clinical preventive practices, and a health care access. An initial question regarding time in the United States was added to the questionnaire. Four individuals were selected to perform the surveys via telephone. These individuals were bilingual in either English and Spanish or English and Low German (Plautdietsch). In most cases farmworkers were surveyed by individuals of their same gender. A total of 284 males and 300 females were surveyed from a list of 1173 males and 1209 females registered farmworkers in 2009. Surveyors attempted to contact all 2,382 farmworkers but were able to reach and survey only 25%. A total of 269 (124 males/145 females) Low German, 33 (18 males/15 females) English and 284 (142 males/140 females) Spanish farmworkers were surveyed.

Following is a list of the questions asked, responses and discussion of each along with responses from the some of the most recent information from the BRFSS with Kansans.

How long have you been in the United States? _____

RESPONSES	ALL	ENGLISH	LOWGERMAN	SPANISH
U.S. Born	5.7%	100%	0%	0%
2 years or less	4.2%	0%	7%	10%
5 years or less	18.9%	0%	10%	20%
10 years or less	56.9%	0%	48%	34%
More than 10 years	20.0%	0%	35%	36%

Among all respondents, excluding unknowns and refusals

DISCUSSION

Time in the United States may impact on health status and/or access to health care services for farmworkers. The results show that of the non English speakers, 65.5% of farmworkers have been in the United States ten years or less. Thirty percent of Spanish speaking farmworkers have been in the United States five years or less while 17% of the Low German speaking farmworkers have been in the U.S. five years or less.

Health Status-Core

1. Would you say that in general your health is:

RESPONSES	ALL	ENGLISH	LOWGERMAN	SPANISH
Good to Excellent	75.0%	81.8%	88.9%	61.0%
Fair	19.9%	15.2%	10.4%	29.4%
Poor	5.1%	3.0%	.7%	9.6%

RESPONSES	ALL		ENGLISH		LOWGERMAN		SPANISH	
	Male	Female	Male	Female	Male	Female	Male	Female
Good to Excellent	77.8%	72.3%	94.4%	66.6%	90.3%	87.6%	64.8%	57.2%
Fair	21.1%	19.7%	5.6%	26.7%	8.1%	12.4%	32.4%	26.4%
Poor	2.1%	8%	0%	6.7%	1.6%	0%	2.8%	16.4%

Among all respondents, excluding unknowns and refusals

DISCUSSION

Twenty-five percent of surveyed farmworkers report their general health as fair or poor. Significant differences exist between Spanish speaking (SS) farmworker responses at 39% which compare to English speakers (ES) at 18.2% and Low German speakers (LGS) at 11.1%. More females in all categories perceive their health as fair or poor compared to males in the same categories.

KS BRFSS 2008- 13.5% of adult Kansans 18 years and older have fair to poor health¹ whereas 25% of farmworker survey respondents report fair to poor health.

Health Status-Module

2. Now thinking about your physical health, which includes physical illness and injury, for how many days during the past 30 days was your physical health not good?

RESPONSES	ALL	ENGLISH	LOWGERMAN	SPANISH
30 days	3.0%	9.1%	3.0%	2.2%
14-29 days	3.1%	6.1%	1.9%	4.0%
5-13 days	5.6%	9.1%	1.5%	8.9%
1-4 days	14.6%	6.1%	7.6%	22.3%
None	73.7%	69.6%	86%	62.6%

¹ The Kansas BRFSS Survey is a random digit-dual survey of non-institutionalized adults 18 years and older living in private residences with a landline telephone services. The survey results represent population-based estimates. The weighted data analysis techniques are used to produce estimates representative of the adult population of Kansas.

RESPONSES	ALL		ENGLISH		LOWGERMAN		SPANISH	
	Male	Female	Male	Female	Male	Female	Male	Female
30 days	4.2%	1.7%	16.7%	0%	2.4%	3.6%	4.3%	0%
14-29 days	2.1%	4.1%	0%	13.3%	2.4%	5%	2.1%	5.8%
5-13 days	2.8%	8.2%	0%	20%	.8%	2.1%	4.9%	13.2%
1-4 days	11.3%	17.8%	5.5%	6.7%	10.5%	5%	12.8%	32.1%
None	79.5%	68.2%	77.8%	60%	83.9%	87.9%	75.9%	48.9%

Among all respondents, excluding unknowns and refusals

DISCUSSION

A total of 6.1% of farmworkers surveyed report they have physical health that is not good for 14 days or more of the month. A higher percent of ES farmworkers report health that is not good for 14 days at 15.2%, compared to SS at 6.2% and 4.9% of LGS farmworkers. Male and female responses do not vary significantly.

KS BRFSS 2007- 9.7% of adult Kansans have physical health that is not good for 14 days or more whereas 6.1% of surveyed farmworkers report having physical health that is not good for 14 days or more.

- Now thinking about your mental health, which includes depression and problems with emotions, for how many days during the past 30 days was your mental health not good?

RESPONSES	ALL	ENGLISH	LOWGERMAN	SPANISH
30 days	2.7%	3.0%	3.7%	1.8%
14-29 days	2.9%	3.0%	2.0%	3.6%
5-13 days	6.7%	6.1%	5.7%	7.6%
1-4 days	16.7%	9.1%	10.7%	22.5%
None	71.0%	75.8%	77.9%	64.5%

RESPONSES	ALL		ENGLISH		LOWGERMAN		SPANISH	
	Male	Female	Male	Female	Male	Female	Male	Female
30 days	2.9%	2.5%	5.6%	0%	1.6%	4.7%	2.9%	.7%
14-29 days	1.4%	4.2%	0%	6.7%	1.6%	3.1%	2.2%	5.1%
5-13 days	4.8%	8.5%	5.6%	6.7%	.8%	7.8%	5.7%	9.5%
1-4 days	10.7%	22.4%	11.0%	13.3%	1.6%	14.7%	14.4%	30.7%
None	80.1%	62.3%	77.8%	73.3%	94.4%	69.8%	74.8%	54%

Among all respondents, excluding unknowns and refusals

DISCUSSION

Overall, 3.6% of farmworkers surveyed report 14 or more days of mental health that is not good with 6% of ES workers, 5.7% of LGS and 5.4% of SS workers reporting the same. Higher percentages of females than males in each category

report 14 or more days of mental health not good with ES males 5.6%/ES females 6.7%, LGS males 3.2%/LGS females 7.8% and SS males 5.1%/SS females 5.8%. Approximately 10% of LGS farmworkers refused to answer or didn't know.

KS BRFSS 2008- 9% of adult Kansans have mental health that is not good for 14 days or more whereas 5.6% of surveyed farmworkers report health that is not good for 14 days or more.

4. During the past 30 days, for about how many days did poor physical or mental health keep you from doing your usual activities, such as self-care, work or recreation?

RESPONSES	ALL	ENGLISH	LOWGERMAN	SPANISH
30 days	2.4%	3.0%	3.4%	1.4%
14-29 days	1.8%	3.0%	1.7%	1.8%
5-13 days	2.9%	3.0%	3.0%	2.9%
1-4 days	11.2%	9.1%	5.5%	16.3%
None	81.7%	81.9%	86.5%	77.6%

RESPONSES	ALL		ENGLISH		LOWGERMAN		SPANISH	
	Male	Female	Male	Female	Male	Female	Male	Female
30 days	2.1%	2.6%	0%	6.7%	2.6%	5.3%	2.9%	0%
14-29 days	.7%	3%	0%	6.7%	.9%	1.8%	0%	3.2%
5-13 days	.7%	5.3%	0%	6.7%	3.5%	5.3%	.7%	5.1%
1-4 days	4.6%	18%	11.1%	6.7%	6.1%	9.7%	6.5%	26.1%
None	91.8%	71.1%	88.9%	73.3%	87.0%	77.9%	89.9%	65.2%

Among all respondents, excluding unknowns and refusals

DISCUSSION

A total of 4.2% of farmworkers surveyed report poor physical or mental health keep them from doing their usual activities 14 or more days a month with ES workers at 6%, LGS workers at 5.1% and SS workers at 3.2%. Significant differences between male and female responses in each category are found with ES males 0%/ES females 13.4%, LGS males 3.5%/LGS females 7.1% and SS males 2.9%/SS females 3.2%. Approximately 12% of LGS farmworkers refused to answer or didn't know.

KS BRFSS 2009- 11.1% of adult Kansans have poor physical or mental health that keep them from doing usual activities for 14 days or more whereas 4.2% of farmworkers surveyed report poor physical or mental health that keep them from doing usual activities for 14 days or more.

Health Care Coverage-Core

- 5 Do you have any kind of health care coverage, including health insurance, prepaid plans such as HMOs, or government plans such as Medicare?

RESPONSES	ALL	ENGLISH	LOWGERMAN	SPANISH
Yes	10%	9.4%	8.5%	9.4%
No	90%	90.6%	91.5%	90.6%

RESPONSES	ALL		ENGLISH		LOWGERMAN		SPANISH	
	Male	Female	Male	Female	Male	Female	Male	Female
Yes	13.8%	6.4%	27.8%	26.7%	9.7%	7.6%	9.9%	2.9%
No	86.2%	93.6%	72.2%	73.3%	90.3%	92.4%	90.1%	97.1%

Among all respondents, excluding unknowns and refusals

DISCUSSION

Ninety percent of farmworkers surveyed have insurance with ten percent uninsured. While there is no significant difference in insurance coverage between the various cultural/linguistic groups there is a significant difference between males and females with total uninsured males at 86.2% to 93.6% females. Spanish speaking females are in the group most likely to be uninsured.

6. Was there a time in the past 12 months when you needed medical care, but could not get it?

RESPONSES	ALL	ENGLISH	LOWGERMAN	SPANISH
Yes	8.6%	3.0%	1.9%	15.7%
No	91.4%	97%	98.1%	84.3%

RESPONSES	ALL		ENGLISH		LOWGERMAN		SPANISH	
	Male	Female	Male	Female	Male	Female	Male	Female
Yes	5.3%	11.7%	0%	6.7%	.8%	2.8%	9.9%	21.6%
No	94.7%	88.3%	100%	93.3%	99.2%	97.2%	90.1%	78.4%

Among all respondents, excluding unknowns and refusals

DISCUSSION

Overall, 8.6% of farmworkers surveyed experienced a time when they could not get medical care in the last 12 months when they needed it. Significant difference is found between the various linguistic cultural groups with 3% of ES workers, 1.9% of LGS workers and 15.7% of SS workers not getting medical care

at a time when they needed it. Females were more likely than males to not get care with SS females in the group mostly likely not to get care when they need it.

KS BRFSS 2002- 4.7% of adult Kansans could not get medical care in the last 12 months when needed whereas 8.6% of farmworkers surveyed report they could not get medical care in the last 12 months when needed.

7. What is the main reason you did not get medical care?
Would you say:

RESPONSES	ALL	ENGLISH	LOWGERMAN	SPANISH
Cost-include no insurance	72.0%			77.3%
Distance	19%			20.4%
Office wasn't open when I could get there	2.0%		50.0%	
Too long a wait for an appointment	2.0%			2.3%
No child care				
No transportation				
No access for people with disabilities				
The medical provider didn't speak my language				
No coverage for specialty care	2.0%	100%	50%	
Voucher was a problem	2.0%			50.0%

RESPONSES	ALL		ENGLISH		LOWGERMAN		SPANISH	
	Male	Female	Male	Female	Male	Female	Male	Female
Cost-include no insurance	73.3%	68.8%		0%	0%	0%	78.6%	73.3%
Distance	6.7%	25%		0%	0%	0%	7.1%	26.7%
Office wasn't open when I could get there	6.7%	0%		0%	100%	0%	0%	0%
Too long a wait for an appointment	6.7%	0%		0%	0%	0%	7.1%	0%
No child care	0%	0%		0%	0%	0%	0%	0%
No transportation	0%	0%		0%	0%	0%	0%	0%
No access for people with disabilities	0%	0%		0%	0%	0%	0%	0%
The medical provider didn't speak my language	0%	0%		0%	0%	0%	0%	0%
Do not have medicare	6.7%	0%		100%	0%	0%	7.1%	0%
No coverage for specialty care	0%	3.1%		0%	0%	0%	0%	0%
Voucher was a problem	0%	3.1%		0%	0%	100%	0%	0%

Among all respondents, excluding unknowns and refusals

DISCUSSION

For farmworkers surveyed the two most significant barriers to not getting care are cost/no insurance (72%) and distance (19%) to a provider. Other lesser barriers include too long a wait for an appointment, no coverage for specialty care, and the office was not open at a time they could get there.

8. About how long has it been since you last visited a doctor for a routine checkup? A routine checkup is a general physical exam, not an exam for a specific injury, illness, or condition.

RESPONSES	ALL	ENGLISH	LOWGERMAN	SPANISH
Within the past year (anytime less than 12 months ago)	58%	62.5%	63.1%	53.4%
Within the past 2 years (1 year but less than 2 years ago)	10.8%	6.3%	13.0%	9.8%
Within the past 5 years (2 years but less than five years)	9.5%	12.5%	10.6%	8.3%
5 or more years	10.1%	15.6%	10.1%	9.4%
Never	11.6%	3.1%	3.2%	19.1%

RESPONSES	ALL		ENGLISH		LOWGERMAN		SPANISH	
	Male	Female	Male	Female	Male	Female	Male	Female
Within the past year (anytime less than 12 months ago)	37.8%	73.6%	61.1%	64.3%	50.7%	69.7%	27.7%	78.6%
Within the past 2 years (1 year but less than 2 years ago)	10%	11.5%	5.6%	7.1%	14.7%	12.0%	8.0%	11.4%
Within the past 5 years (2 years but less than five years)	10.4%	8.8%	16.7%	7.1%	10.7%	10.6%	9.5%	7.1%
5 or more years	16.5%	5.1%	11.0%	21.4%	18.7%	5.6%	16.1%	2.9%
Never	25.2%	1%	5.6%	0%	5.3%	2.1%	38.7%	0%

Among all respondents, excluding unknowns and refusals

DISCUSSION

A total of 11.6% of surveyed farmworkers report they have never visited a doctor for a routine office exam. This response varies drastically between cultural/linguistic groups with ES workers at 3.1%, LGS workers at 3.2% and SS workers at 19.1% who have never had a routine office exam. But even more telling is the difference between males at 25.2% and females 1% with SS males (38.7%) the most likely to not have a routine exam. Approximately twenty percent of LGS farmworkers surveyed either didn't know or refused to answer this question.

KS BRFSS 2009- 71.2% of adult Kansans had a routine visit in the past 12 months whereas 58% of farmworkers surveyed report they had a routine visit in the past 12 months.

Asthma-Core

9. Have you ever been told by a doctor, nurse, or other health professional that you had asthma?

RESPONSES	ALL	ENGLISH	LOWGERMAN	SPANISH
Yes	2.6%	9.1%	1.9%	2.5%
No	97.4%	90.9%	98.1%	97.5%

RESPONSES	ALL		ENGLISH		LOWGERMAN		SPANISH	
	Male	Female	Male	Female	Male	Female	Male	Female
Yes	1.8%	3.3%	5.6%	13.3%	.8%	2.8%	2.1%	2.9%
No	98.2%	96.7%	94.4%	86.7%	99.2%	97.2%	97.9%	97.1%

Among all respondents, excluding unknowns and refusals

DISCUSSION

Overall, 2.6% of farmworkers surveyed have been told they have asthma with ES workers the highest (9.1%) and ES females (13.3%) the most likely to be told they have asthma.

KS BRFSS 2000- 10.9% of adult Kansans have been told they have asthma whereas 2.6% of farmworkers surveyed report they have been told they have asthma.

10. Do you still have asthma?

RESPONSES	ALL	ENGLISH	LOWGERMAN	SPANISH
Yes	73.3%	100.0%	80.0%	57.1%
No	26.7%	.0%	20.0%	42.9%

RESPONSES	ALL		ENGLISH		LOWGERMAN		SPANISH	
	Male	Female	Male	Female	Male	Female	Male	Female
Yes	60%	80%	100%	100%	100%	75%	33.3%	75%
No	40%	20%	0%	0%	0%	25%	66.7%	25%

Among all respondents, excluding unknowns and refusals

DISCUSSION

A total percent of 73.3% of farmworkers surveyed report they still have asthma with 80% of females compared of 60% of males.

KS BRFSS 2009- 8.5% of adult Kansans still have asthma whereas 73.3% of farmworkers surveyed report they still have asthma.

Diabetes-Core

11. Have you ever been told by a doctor that you have diabetes?

RESPONSES	ALL	ENGLISH	LOWGERMAN	SPANISH
Yes	8.2%	12.1%	4.9%	7.2%
Yes but only during pregnancy				
No	91.8%	87.9%	94.4%	89.6%

RESPONSES	ALL		ENGLISH		LOWGERMAN		SPANISH	
	Male	Female	Male	Female	Male	Female	Male	Female
Yes	4.6%	11.7%	16.7%	6.7%	4%	6.9%	3.5%	17.4%
Yes but only during pregnancy								
No	95.4%	88.3%	83.3%	93.3%	96%	77.8%	96.5%	82.6%

Among all respondents, excluding unknowns and refusals

DISCUSSION

A total percent of 8.2% of farmworkers surveyed have been told by a doctor they have diabetes ES workers at 12.1%, LGS workers at 4.9% and SS workers at 7.2%. ES males (16.7%) and SS females (17.4%) have the highest number of individuals reporting the disease.

KS BRFSS 2009- Kansas responses show 8.5% have been told by a doctor they have diabetes whereas 8.2% of farmworkers surveyed reported they have been told by a doctor they have diabetes.

Diabetes-Module

12. About how often do you check your blood for glucose or sugar?
Include times when checked by a family member or friend, but do not include times when checked by a health professional.

RESPONSES	ALL	ENGLISH	LOWGERMAN	SPANISH
1-3 times per day	55.5%	25%	50%	65%
2-4 times per week	13.9%	25%	8.3%	15%
2-4 times per month	13.9%	0%	25%	10%
4 times per year	2.8%	0%	8.3%	0%
Never	13.9%	50%	8.3%	10%

RESPONSES	ALL		ENGLISH		LOWGERMAN		SPANISH	
	Male	Female	Male	Female	Male	Female	Male	Female
1-3 times per day	33.3%	66.6%	33.3%	0%	50%	50%	20%	80%
2-4 times per week	25%	8.4%	0%	100%	0%	12.5%	60%	0%
2-4 times per month	8.3%	16.6%	0%	0%	25%	25%	0%	13.3%
4 times per year	0%	4.2%	0%	0%	0%	12.5%	0%	0%
Never	33.3%	4.2%	66.7%	0%	25%	0%	20%	6.7%

Among all respondents, excluding unknowns and refusals

DISCUSSION

Overall, 55.5% of surveyed farmworkers with diabetes report they check their blood for glucose daily while 13.9% never check their blood for glucose. The group most at risk for not checking blood for glucose is males of all groups, especially ES males at 66.7%.

KS BRFSS 2009- 66.2% of adult Kansans check their blood for glucose daily and 7.5% never check their blood for glucose whereas 55.5% of surveyed farmworkers with diabetes check their blood for glucose daily and 13.9% never check their blood for glucose.

13. About how many times in the past 12 months have you seen a doctor, nurse, or other health professional for your diabetes?

RESPONSES	ALL	ENGLISH	LOWGERMAN	SPANISH
4 or more times	55.5%	25.0%	58.4%	60.0%
3 times	11.1%	25.0%	16.7%	5.0%
2 times	19.4%	.0%	8.3%	30.0%
1 time	5.6%	25.0%	8.3%	.0%
None	8.3%	25.0%	8.3%	5.0%

RESPONSES	ALL		ENGLISH		LOWGERMAN		SPANISH	
	Male	Female	Male	Female	Male	Female	Male	Female
4 or more times	41.7%	64%	33.4%	0%	25%	75%	40%	60%
3 times	16.7%	8.3%	0%	100%	50%	0%	0%	6.7%
2 times	8.3%	25%	0%	0%	0%	12.5%	20%	33.3%
1 time	8.3%	4.2%	33.3%	0%	0%	12.5%	0%	0%
None	25%	0%	33.3%	0%	25%	0%	20%	0%

Among all respondents, excluding unknowns and refusals

DISCUSSION

Responses regarding visits to a health care professional show that approximately 55.5% of surveyed farmworkers with diabetes have four or more visits with a health professional per year with 8.3% having none. Again the group most at risk for not visiting with a health professional is males, especially ES males at 33.3%.

KS BRFSS 2009- 11.1% of adult Kansans have not seen a health provider for their diabetes in the past 12 months whereas 8.3% of farmworkers surveyed have not seen a health provider for their diabetes in the past 12 months.

14. A test for "A one C" measures the average level of blood sugar over the past three months. About how many times in the past 12 months has a doctor, nurse, or other health professional checked you for "A one C"?

RESPONSES	ALL	ENGLISH	LOWGERMAN	SPANISH
4 or more times	4.3%	25.0%	.0%	.0%
3 times	13.1%	25.0%	.0%	16.7%
2 times	17.4%	25.0%	.0%	25.0%
1 time	17.4%	.0%	14.3%	25.0%
None	39.1%	25.0%	85.7%	16.7%
Never heard of Ha1C	8.7%	.0%	.0%	16.7%

RESPONSES	ALL		ENGLISH		LOWGERMAN		SPANISH	
	Male	Female	Male	Female	Male	Female	Male	Female
4 or more times	11.1%	0%	33.3%	0%	0%	0%	0%	0%
3 times	11.1%	14.3%	33.3%	0%	0%	0%	0%	22.2%
2 times	11.1%	21.4%	0%	100%	0%	0%	0%	22.2%
1 time	11.1%	21.4%	0%	0%	0%	25%	33.3%	22.2%
None	55.6%	28.6%	33.4%	0%	100%	74%	33.3%	11.1%
Never heard of Ha1C	0%	14.3%	0%	0%	0%	0%	0%	22.2%

Among all respondents, excluding unknowns and refusals

DISCUSSION

Forty-three percent of farmworkers surveyed reported they don't know, aren't sure or never heard of a Ha1C. Surveyed farmworkers with diabetes reported 52.2% had a Ha1C in the past 12 months with LGS workers only 14.3% and SS farmworkers with the highest percentage at 66.7%. SS females were the largest group of farmworkers that did not what the test is at 22.2%.

KS BRFSS 2009- 92.6% of adult Kansans have had a Ha1C in the past 12 months whereas 39.1% of farmworkers surveyed report they have had a Ha1C in the past 12 months.

15. About how many times in the past 12 months has a health professional checked your feet for any sores or irritations?

RESPONSES	ALL	ENGLISH	LOWGERMAN	SPANISH
4 or more times	21.6%	50.0%	23.1%	15.0%
3 times	8.1%	25.0%	7.7%	5.0%
2 times	13.5%	.0%	0%	25.0%
1 time	18.9%	25.0%	15.4%	20.0%
None	37.9%	.0%	53.8%	35.0%

RESPONSES	ALL		ENGLISH		LOWGERMAN		SPANISH	
	Male	Female	Male	Female	Male	Female	Male	Female
4 or more times	38.5%	12.5%	66.7%	0%	20%	25%	40%	6.7%
3 times	7.7%	8.3%	0%	100%	20%	0%	0%	6.7%
2 times	15.4%	12.5%	0%	0%	0%	0%	40%	20%
1 time	15.4%	20.8%	33.3%	0%	20%	12.5%	0%	26.7%
None	23.1%	45.8%	0%	0%	40%	62.5%	20%	40%

Among all respondents, excluding unknowns and refusals

DISCUSSION

Overall 37.9% of surveyed farmworkers with diabetes have not had their feet checked by a health professional in the past 12 months. LGS farmworkers fair much worse with 53.8% not having their feet checked, followed by SS farmworkers at 35% and ES all receiving checks in the last 12 months. Males do better than females in this area.

KS BRFSS 2009- 30.8% of adult Kansans have not had their feet checked by a health professional in the past 12 months whereas 37.9% of farmworkers surveyed report they have not had their feet checked by a health professional.

16. When was the last time you had an eye exam in which the pupils were dilated? This would have made you temporarily sensitive to bright light.

RESPONSES	ALL	ENGLISH	LOWGERMAN	SPANISH
Within the past month	30.6%	25.0%	38.5%	26.3%
Within the past year	38.9%	25.0%	38.5%	40.0%
Within the past 2 years	2.8%	.0%	.0%	5.0%
2 or more years ago	8.3%	50.0%	.0%	5.0%
Never	19.4%	.0%	23.0%	20.0%

RESPONSES	ALL		ENGLISH		LOWGERMAN		SPANISH	
	Male	Female	Male	Female	Male	Female	Male	Female
Within the past month	25%	33.3%	33.3%	0%	20%	50%	25%	26.7%
Within the past year	33.3%	41.7%	0%	100%	40%	37.5%	50%	40%
Within the past 2 years	0%	4.2%	0%	0%	0%	0%	0%	6.7%
2 or more years ago	16.7%	4.2%	66.7%	0%	0%	0%	0%	6.7%
Never	25%	16.7%	0%	0%	40%	12.5%	25%	20%

Among all respondents, excluding unknowns and refusals

DISCUSSION

The results of this indicator show 19.4% of surveyed farmworkers with diabetes report never having a vision check with pupils dilated. LGS farmworkers have the worst results at 23%, followed by SS farmworkers at 20% and all ES farmworkers receiving a vision check with dilation. Females do better than males in this area.

KS BRFSS 2009- 3.8% of adult Kansans have never had a dilated vision exam whereas 19.4% of farmworkers surveyed report never having a dilated vision exam.

17. Knowing that you have diabetes, please tell me what steps you take to avoid having an elevated blood sugar. [Mark all that apply]

RESPONSES	ALL	ENGLISH	LOWGERMAN	SPANISH
Control or awareness of carbohydrate intake	47.2%	54.5%	20.0%	21.3%
Count carbohydrates	22.2%	15.2%	12.0%	8.5%
Exercise	47.2%	12.1%	20.0%	25.5%
Test blood sugar or glucose	36.1%	16.3%	12.0%	17.0%
Adjust medication	47.2%	21.3%	28.0%	14.9%
Other	2.8%	1.3%	.0%	2.1%
Nothing	19.4%	8.8%	8.0%	10.6%

RESPONSES	ALL		ENGLISH		LOWGERMAN		SPANISH	
	Male	Female	Male	Female	Male	Female	Male	Female
Control or awareness of carbohydrate intake	11.1%	26.4%	20%	33.3%	0%	33.3%	16.7%	22.9%
Count carbohydrates	7.4%	11.3%	0%	0%	20%	20%	16.7%	28.6%
Exercise	22.2%	24.5%	0%	0%	20%	20%	16.7%	28.6%
Test blood sugar or glucose	29.6%	13.2%	20%	33.3%	20%	6.7%	25%	14.3%
Adjust medication	14.8%	17%	60%	0%	30%	26.7%	16.7%	14.3%
Other	0	1.9%	0%	0%	0%	0%	0%	2.9%
Nothing	0%	5.7%	0%	0%	20%	0%	16.7%	8.6%

Among all respondents, excluding unknowns and refusals

DISCUSSION

Almost half of all surveyed farmworkers with diabetes report they do three things to help control their blood sugar 1) controlling or awareness of carbohydrates intake 2) exercising and 3) adjusting their medication. These were followed by testing blood sugar and then counting carbohydrates. A total of 19.4% of surveyed farmworkers do nothing to control their diabetes.

KS BRFSS 2007- 3.9% of adult Kansans do nothing to control blood sugar whereas 19.4% of surveyed farmworkers report they do nothing to control blood sugar.

Oral Health-Core

18. How long has it been since you last visited a dentist or a dental clinic for any reason?

RESPONSES	ALL	ENGLISH	LOWGERMAN	SPANISH
Within the past year (anytime less than 12 months ago)	43.5%	54.5%	40.8%	44.9%
Within the past 2 years (1 year but less than 2 years ago)	15.8%	15.2%	15.7%	16.0%
Within the past 5 years (2 years but less than five years)	16.4%	12.1%	19.9%	13.5%
5 or more years	16.4%	8.8%	16.5%	16.0%
Never	7.9%	1.3%	7.1%	9.6%

RESPONSES	ALL		ENGLISH		LOWGERMAN		SPANISH	
	Male	Female	Male	Female	Male	Female	Male	Female
Within the past year (anytime less than 12 months ago)	41.1%	45.8%	50%	60%	42.3%	38.6%	39%	50.7%
Within the past 2 years (1 year but less than 2 years ago)	14.5%	17.1%	22.2%	6.7%	12.2%	18.8%	15.6%	16.4%
Within the past 5 years (2 years but less than five years)	15.2%	17.4%	11.1%	13.3%	19.5%	20.1%	12.1%	15%
5 or more years	18.4%	14.4%	16.7%	20%	17.0%	15.3%	19.1%	12.9%
Never	10.6%	5.4%	0%	0%	8.1%	6.3%	14.3%	5%

Among all respondents, excluding unknowns and refusals

DISCUSSION

Not quite half (43.5%) of farmworkers surveyed report they have visited with a dentist in the past 12 months with 9.6% of SS, 7.1% of LGS and then 1.3% of ES farmworkers never visiting a dentist. Those without a visit in five or more years were 16.4% of all farmworkers with 8.8% of ES, 16.5% of LGS and 16% of SS farmworkers. Males over all and within every cultural/linguistic group did worse than females on this indicator.

KS BRFSS 2008- 70.5% of adult Kansans have visited with a dentist in the past 12 months and .6% of adult Kansans have never visited a dentist whereas 43.5% of farmworkers surveyed report they have visited a dentist in the past 12 months and 7.9% of surveyed farmworkers report they have never visited a dentist.

19. How many of your permanent teeth have been removed because of tooth decay or gum disease? Include teeth lost to infection, but do not include teeth lost for other reasons, such as injury or orthodontics.

RESPONSES	ALL	ENGLISH	LOWGERMAN	SPANISH
All	7.4%	6.3%	13.8%	1.4%
6 or more but not all	10.1%	21.9%	15.7%	3.5%
1 to 5	53.3%	37.5%	55.2%	53.2%
None	29.2%	34.3%	15.3%	41.8%

RESPONSES	ALL		ENGLISH		LOWGERMAN		SPANISH	
	Male	Female	Male	Female	Male	Female	Male	Female
All	6.7%	8%	5.8%	6.7%	13.8%	13.8%	.7%	2.1%
6 or more but not all	8.2%	12%	11.8%	33.3%	11.4%	19.3%	4.9%	2.1%
1 to 5	53.5%	53%	41.2%	33.3%	61.8%	49.7%	47.9%	58.6%
None	31.6%	27%	41.2%	26.7%	13%	17.2%	46.5%	37.1%

Among all respondents, excluding unknowns and refusals

DISCUSSION

Overall 72.5% of farmworkers surveyed report they have five or less teeth removed because of tooth decay or gum disease but 17.5% report they have from six to all of their teeth removed. LGS and ES farmworkers report the most teeth removed at 28-29% with SS farmworkers reporting significantly fewer removed than the other two groups at 4.9%.

KS BRFSS 2008- 85.4% of adult Kansans have five or less teeth removed and 14.6% have six or more teeth removed whereas 72.5% of farmworkers surveyed report they have five or less teeth removed and 17.5% report six or more teeth removed. .

20. How long has it been since you had your teeth "cleaned" by a dentist or dental hygienist?

RESPONSES	ALL	ENGLISH	LOWGERMAN	SPANISH
Within the past year (anytime less than 12 months ago)	38.7%	43.4%	40.8%	36.7%
Within the past 2 years (1 year but less than 2 years ago)	14.2%	10.0%	12.4%	16.0%
Within the past 5 years (2 years but less than five years)	12.3%	23.3%	12.8%	10.7%
5 or more years	22.9%	23.3%	31.7%	16.0%
Never	11.9%	.0%	2.3%	20.6%

RESPONSES	ALL		ENGLISH		LOWGERMAN		SPANISH	
	Male	Female	Male	Female	Male	Female	Male	Female
Within the past year (anytime less than 12 months ago)	36%	41.2%	35.3%	53.8%	40.2%	41.3%	33.4%	40%
Within the past 2 years (1 year but less than 2 years ago)	11.2%	16.8%	17.7%	0%	13%	11.9%	9.2%	22.9%
Within the past 5 years (2 years but less than five years)	9.6%	14.7%	23.5%	23.1%	9.8%	15.1%	7.8%	13.6%
5 or more years	23.6%	22.2%	23.5%	23.1%	31.5%	31.7%	18.4%	13.6%
Never	19.6%	5%	0%	0%	5.4%	0%	31.2%	10%

Among all respondents, excluding unknowns and refusals

DISCUSSION

Approximately 38.7% of all surveyed farmworkers report they have had their teeth cleaned in the last 12 months however 20.6% of SS farmworkers report never having their teeth cleaned followed by 2.3% of LGS and 0% ES farmworkers. Males are less likely than females to have gotten their teeth cleaned. Approximately one quarter of LGS farmworkers either didn't know or refused to answer this question.

KS BRFSS 2008- 70.7% of Kansans have had their teeth cleaned in the last 12 months but 1.7% of Kansas have never had their teeth cleaned whereas 37.7% of surveyed farmworkers report they have had their teeth cleaned in the last 12 months but with 11.9% of farmworkers never having their teeth cleaned.

Tobacco Use-Core

21. Do you now smoke cigarettes every day, some days, or not at all?

RESPONSES	ALL	ENGLISH	LOWGERMAN	SPANISH
Every day	8.4%	15.6%	11.9%	4.3%
Some days	5.0%	18.8%	.8%	7.4%
Not at all	86.6%	65.6%	87.3%	88.3%

RESPONSES	ALL		ENGLISH		LOWGERMAN		SPANISH	
	Male	Female	Male	Female	Male	Female	Male	Female
Every day	14.9%	2.3%	11.8%	20%	22.8%	2.8%	8.5%	0%
Some days	8.5%	1.7%	23.5%	13.3%	.8%	.7%	13.4%	1.4%
Not at all	76.6%	96%	64.7%	66.7%	76.4%	96.6%	78.2%	97.6%

Among all respondents, excluding unknowns and refusals

DISCUSSION

Around thirteen percent of surveyed farmworkers report they smoke, with ES farmworkers most likely to smoke followed by LGS and then SS farmworkers. Males are much more likely than females to smoke with males at 23.4% and females at 4%.

KS BRFSS 2009- 17.8% of adult Kansans smoke whereas 13.4% of surveyed farmworkers report they smoke.

Alcohol Use-Core

22. During the past 30 days, have you had at least one drink of any alcoholic beverage such as beer, wine, a malt beverage or liquor?

RESPONSES	ALL	ENGLISH	LOWGERMAN	SPANISH
Yes	36.4%	46.9%	39.6%	32.3%
No	63.4%	53.1%	60.4%	67.7%

RESPONSES	ALL		ENGLISH		LOWGERMAN		SPANISH	
	Male	Female	Male	Female	Male	Female	Male	Female
Yes	58.9%	15.3%	70.6%	20%	56.9%	24.8%	59.2%	5%
No	41.1%	84.7%	29.4%	80%	43.1%	75.2%	40.8%	95%

Among all respondents, excluding unknowns and refusals

DISCUSSION

Approximately one-third of surveyed farmworkers report they have had at least one drink of an alcoholic beverage in the past 30 days. Males were three times more likely to have had a drink than females.

KS BRFSS 2008- 50% of adult Kansans had at least one drink in the past 30 days whereas 36.4% of farmworkers surveyed report at least one drink in the past 30 days.

23. One drink is equivalent to a 12-ounce beer, a 5-ounce glass of wine, or a drink with one shot of liquor. During the past 30 days, on the days when you drank, about how many drinks did you drink on the average?

RESPONSES	ALL	ENGLISH	LOWGERMAN	SPANISH
1 drink	39.5%	26.7%	56.9%	31.9%
2 drinks	21.0%	20.0%	15.7%	24.2%
3 drinks	11.5%	26.7%	3.8%	13.2%
4 drinks	15.9%	13.3%	11.8%	18.7%
5-30 drinks	12.1%	13.3%	11.8%	12.1%

RESPONSES	ALL		ENGLISH		LOWGERMAN		SPANISH	
	Male	Female	Male	Female	Male	Female	Male	Female
1 drink	24.8%	88.9%	16.7%	66.7%	12%	100%	29.8%	57.1%
2 drinks	26.4%	2.8%	25%	0%	32%	0%	25%	14.3%
3 drinks	14%	2.8%	33.3%	0%	8%	0%	13.1%	14.3%
4 drinks	20.7%	0%	16.7%	0%	24%	0%	20.3%	0%
5-30 drinks	14%	5.6%	8.3%	33.3%	24%	0%	11.9%	14.3%

Among all respondents, excluding unknowns and refusals

DISCUSSION

Perhaps the most significant result in this question was that more than half of the surveyed LGS farmworkers who reported having a drink responded they either didn't know or didn't respond at all to how many drinks they have on the days they drink. None of the other cultural linguistic groups responded similarly. Twenty eight percent of surveyed farmworkers that answered (less those that didn't know) report they had four or more drinks a day on average when they drank. Males reported drinking four or more a day at 34.7%, females at 5.6%.

KS BRFSS 2009- 15.3% of adult Kansans drink four or more drinks a day whereas 28% of farmworkers surveyed reported four or more drinks on days when they drink.

Family Planning-Core

24. Some things people do to keep from getting pregnant include not having sex at certain times, using birth control methods such as the pill, Norplant, shots or Depo-Provera, condoms, diaphragm, foam, IUD, having their tubes tied, or having a vasectomy. Are you or your [husband/wife/partner] doing anything now to keep [you/her] from getting pregnant?

RESPONSES	ALL	ENGLISH	LOWGERMAN	SPANISH
Yes	62.1%	63.3%	57.4%	66.6%
No	34.4%	36.7%	41.9%	27.0%
No partner/not sexually active	.0%	.0%	.7%	6.4%
Same sex partner	.0%	.0%	.0%	.0%

RESPONSES	ALL		ENGLISH		LOWGERMAN		SPANISH	
	Male	Female	Male	Female	Male	Female	Male	Female
Yes	60.1%	64.1%	43.8%	85.7%	56.2%	58.3%	65.2%	67.9%
No	38.5%	30.5%	56.2%	14.3%	43.8%	40.3%	31.9%	22.1%
No partner/not sexually active	1.4%	5.4%	0%	0%	0%	1.4%	2.8%	10%
Same sex partner	0%	0%	0%	0%	0%	0%	0%	0%

Among all respondents, excluding unknowns and refusals

DISCUSSION

Approximately two thirds of farmworkers surveyed report they are doing something to keep from getting pregnant. The group least likely to being doing something is the LGS farmworker group.

KS BRFSS 2004- 60.2% of adult Kansans do something to keep from getting pregnant whereas 62.1% of farmworkers surveyed report doing something to keep from getting pregnant.

25. What are you or your [if female husband/partner; if male, insert wife/partner] doing now to keep [if female, insert "you"; insert "her" if male] from getting pregnant?

RESPONSES	ALL	ENGLISH	LOWGERMAN	SPANISH
Tubes tied	23.6%	35.5%	29.8%	17.3%
Vasectomy	4.2%	5.0%	4.0%	4.3%
Pill	22.2%	.0%	22.5%	24.3%
Condoms	17.9%	5.0%	7.3%	28.1%
Foam, jelly, cream	1.1%	10.0%	1.3%	.0%
Diaphragm	1.1%	.0%	1.3%	1.1%
Norplant	1.4%	.0%	3.3%	.0%
IUD	13 %	5.0%	17.9%	9.7%
Shots (Depo-Provera)	6.2%	.0%	5.3%	7.7%
Withdrawal	1.7%	.0%	.0%	3.2%
No sex certain times (rhythm)	1.4%	.0%	.0%	2.7%
Not sexually active	.0%	.0%	.0%	.0%
Other method(s)	6.2%	8.0%	7.3%	1.6%

RESPONSES	ALL		ENGLISH		LOWGERMAN		SPANISH	
	Male	Female	Male	Female	Male	Female	Male	Female
Tubes tied (sterilization)	23.8%	23.4%	37.5%	33.3%	29.9%	29.8%	18%	16.7%
Vasectomy (sterilization)	4.9%	3.6%	12.5%	0%	3%	4.8%	5.6%	3.1%
Pill	23.2%	21.4%	0%	0%	28.4%	17.9%	21.3%	27.1%
Condoms	15.9%	19.8%	12.5%	0%	4.5%	9.5%	24.7%	31.3%
Foam, jelly, cream	1.8%	.5%	25%	0%	1.5%	1.2%	0%	0%
Diaphragm	1.2%	1%	0%	0%	1.5%	1.2%	1.1%	1%
Norplant	1.2%	1.6%	0%	0%	3%	3.6%	0%	0%
IUD	11.6%	14.1%	0%	8.3%	16.4%	19%	9%	10.4%
Shots (Depo-Provera)	6.1%	6.3%	9%	9%	6%	4.8%	6.7%	0%
Withdrawal	3.7%	0%	0%	0%	0%	0%	6.7%	0%
Not having sex at certain times (rhythm)	3%	0%	0%	0%	0%	0%	5.6%	0%
No partner or not sexually active	0%	0%	0%	0%	0%	0%	0%	0%
Other method(s)	3.7%	8.3%	12.5%	58.3%	6%	8.3%	1.1%	2.1%

Among all respondents, excluding unknowns and refusals

DISCUSSION

The top four methods utilized by surveyed farmworkers include tubes tied, pills, condoms and IUDs with Depo-Provera utilized less than these. Favored methods differ greatly between the three cultural/linguistic groups.

26. What is the main reason for not doing anything to keep [if female husband/partner; if male, insert wife/partner] from getting pregnant?

RESPONSES	ALL	ENGLISH	LOWGERMAN	SPANISH
Not sexually active or no partner	3.7%	36.4%	3.7%	30.8%
Didn't think was going to have sex or no regular partner	.0%	.0%	.0%	.0%
You want a pregnancy	9.9%	.0%	9.9%	12.1%
You or your partner don't want to use birth control	.0%	.0%	.0%	2.2%
You or your partner don't like birth control/fear side effect	.0%	.0%	.0%	2.2%
You can't pay for birth control	.0%	.0%	.0%	.0%
Lapse in use of a method	.0%	.0%	.0%	.0%
Don't think you or your partner can get pregnant	.0%	.0%	.0%	.0%
You or your partner had tubes tied (sterilization)	.0%	9.0%	.0%	6.6%
You or your partner had a vasectomy	.0%	.0%	.0%	1.0%
You or your partner had a hysterectomy	.0%	18.2%	.0%	5.5%
You or your partner are too old	1.2%	27.3%	1.2%	15.4%

You or your partner currently breast-feeding	.0%	.0%	.0%	.0%
You or you partner just had a baby or postpartum	.0%	.0%	.0%	12.1%
Other reason	59.3%	9.0%	59.3%	4.4%
Don't care if get pregnant	25.9%	.0%	25.9%	.0%
Same sex partner	.0%	.0%	.0%	.0%
Partner is pregnant now	.0%	.0%	.0%	7.7%

RESPONSES	ALL		ENGLISH		LOWGERMAN		SPANISH	
	Male	Female	Male	Female	Male	Female	Male	Female
Not sexually active or no partner	18.8%	19.4%	44.4%	0%	4.2%	3.5%	21.3%	40.9%
Didn't think was going to have sex or no regular partner	0%	0%	0%	0%	0%	0%	0%	0%
You want a pregnancy	6.3%	13.6%	0%	0%	0%	14%	10.6%	13.6%
You or your partner don't want to use birth control	1.3%	1%	0%	0%	0%	0%	2.1%	2.3%
You or your partner don't like birth control/fear side effect	2.5%	0%	0%	0%	0%	0%	4.3%	0%
You can't pay for birth control	0%	0%	0%	0%	0%	0%	0%	0%
Lapse in use of a method	0%	0%	0%	0%	0%	0%	0%	0%
Don't think you or your partner can get pregnant	0%	0%	0%	0%	0%	0%	0%	0%

You or your partner had tubes tied (sterilization)	7.5%	1%	11.1%	0%	0%	0%	10.6%	2.3%
You or your partner had a vasectomy (sterilization)	1.3%	0%	0%	0%	0%	0%	2.1%	0%
You or your partner had a hysterectomy	1.3%	5.8%	11.2%	50%	0%	0%	0%	11.4%
You or our partner are too old	17.5%	3.9%	33.3%	0%	0%	1.8%	23.4%	6.8%
You or your partner currently breast-feeding	0%	0%	0%	0%	0%	0%	0%	0%
You or you partner just had a baby or postpartum	7.5%	4.9%	0%	0%	0%	0%	12.8%	11.4%
Other reason	30%	28.2%	0%	50%	83.3%	49.1%	8.5%	0%
Don't care if get pregnant	3.8%	17.5%	0%	0%	12.5%	31.6%	0%	0%
Same sex partner	0%	0%	0%	0%	0%	0%	0%	0%
Partner is pregnant now	2.5%	4.9%	0%	0%	0%	0%	4.3%	11.4%

Among all respondents, excluding unknowns and refusals

DISCUSSION

A significant percentage of surveyed LGS farmworkers (30.8%) refused to answer this question while 59.3% of LGS farmworkers that did respond state only “other reasons” for not doing anything. Among the total farmworkers respondents for all groups most stated they either wanted to get pregnant or didn't care if they got pregnant.

KS BRFSS 2004- 30% of adult Kansas either want a pregnancy or don't care if they get pregnant whereas 35.8% of survey farmworkers report they either want a pregnancy or don't care if they get pregnant.

Women’s Health-Core

27. A clinical breast exam is when a doctor, nurse, or other health professional feels the breast for lumps. Have you ever had a clinical breast exam?

RESPONSES	ALL	ENGLISH	LOWGERMAN	SPANISH
Yes	90.6%	60.0%	90.9%	93.6%
No	9.4%	40.0%	9.1%	6.4%

Among all respondents, excluding unknowns and refusals

DISCUSSION

Most female farmworkers surveyed reported they have had a clinical breast exam but of those that did not the ES farmworkers were most likely to not have a clinical breast exam (there were only 15 ES female respondents).

KS BRFSS 2008- 90% of adult female Kansans have had a clinical breast exam whereas 90.6% of surveyed female farmworkers report they have had a clinical breast exam.

28. How long has it been since your last breast exam?

RESPONSES	ALL	ENGLISH	LOWGERMAN	SPANISH
Within the past year (anytime less than 12 months ago)	84.4%	77.8%	84.6%	84.7%
Within the past 2 years (1 year but less than 2 years ago)	8.2%	.0%	6.2%	10.7%
Within the past 5 years (2 years but less than five years)	4.1%	11.1%	5.4%	2.3%
5 or more years	1.9%	.0%	2.3%	1.5%
Never	1.4%	11.1%	1.5%	.8%

Among all respondents, excluding unknowns and refusals

DISCUSSION

Almost 85% of farmworker women surveyed reported they have had a breast exam in the past year with only 77.8% of ES women reporting a breast exam in the past year.

KS BRFSS 2008- 72.6% of adult female Kansans have had a breast exam in the past 12 months whereas 84.4% of female farmworkers surveyed report a breast exam in the past 12 months.

29. A mammogram is an x-ray of each breast to look for breast cancer. Have you ever had a mammogram?

RESPONSES	ALL	ENGLISH	LOWGERMAN	SPANISH
Yes	18.1%	50.0%	12.4%	20.9%
No	81.9%	50.0%	87.6%	79.1%

Among all respondents, excluding unknowns and refusals

DISCUSSION

Only 18.1% of farmworker women surveyed report they have had a mammogram (UDS 2009 shows 24.5% of adult farmworker women registered were age 40 and over).

KS BRFSS 2008- 64.2% of adult female Kansans have had a mammogram whereas 18.1% of female farmworkers report the same.

30. A Pap test is a test for cancer of the cervix. Have you ever had a Pap smear?

RESPONSES	ALL	ENGLISH	LOWGERMAN	SPANISH
Yes	93.9%	85.7%	91.7%	97.1%
No	6.1%	14.3%	8.3%	2.9%

Among all respondents, excluding unknowns and refusals

DISCUSSION

Most farmworker women surveyed report they have had a pap test, however 14.3% of ES, 8.3% of LGS and 2.9% of SS women have not.

KS BRFSS 2008- 94.5% of adult female Kansans have had a pap test whereas 93.9% of female farmworkers surveyed report the same.

31. How long has it been since you had your last Pap smear?

RESPONSES	ALL	ENGLISH	LOWGERMAN	SPANISH
Within the past year (anytime less than 12 months ago)	80.4%	55.6%	75.0%	87.3%
Within the past 2 years (1 year but less than 2 years ago)	9.1%	11.1%	7.6%	10.4%
Within the past 5 years (2 years but less than five years)	2.5%	.0%	5.3%	.0%
5 or more years	4.0%	33.3%	6.1%	2.2%
Never	4.0%	.0%	6.1%	.0%

Among all respondents, excluding unknowns and refusals

DISCUSSION

Of those surveyed farmworker women that reported a pap the ES women were most likely at 33.3% of not having had one for five or more years.

KS BRFSS 2008- 62.1% of adult female Kansans have had a pap in the last 12 months whereas 80.4% of female farmworkers surveyed report a pap in the last 12 months.

32. Have you had a hysterectomy? [A hysterectomy is an operation to remove the uterus (womb).]

RESPONSES	ALL	ENGLISH	LOWGERMAN	SPANISH
Yes	6.7%	20.0%	4.2%	8.0%
No	93.3%	80.0%	95.8%	92.0%

Among all respondents, excluding unknowns and refusals

DISCUSSION

ES farmworker women surveyed report a much higher hysterectomy rate than the other two cultural/linguistic groups.

KS BRFSS 2008- 25.2% of female Kansans have had a hysterectomy whereas 6.7% of farmworker women surveyed report a hysterectomy.

Men's Health-Core

33. A prostate-specific antigen blood test or PSA test is a blood test to check for prostate cancer. Have you ever had a PSA test?

RESPONSES	ALL	ENGLISH	LOWGERMAN	SPANISH
Yes	11.8%	38.9%	9.8%	10.1%
No	88.2%	61.1%	90.2%	89.9%

Among all respondents, excluding unknowns and refusals

DISCUSSION

Only 11.8% of farmworker males surveyed report they have had a PSA test (UDS 2009 show 28.4% of registered adult men are between 40 and 74 years of age).

KS BRFSS 2006- 64.4% of adult male Kansans have had a PSA whereas 11.8% of farmworker males surveyed report a PSA.

34. A digital rectal exam is when a doctor or other health professional inserts a finger in the rectum to check for cancer or other health problems. Have you ever had this exam?

RESPONSES	ALL	ENGLISH	LOWGERMAN	SPANISH
Yes	11.7%	33.3%	7.3%	12.8%
No	88.3%	66.7%	92.7%	87.2%

Among all respondents, excluding unknowns and refusals

DISCUSSION

Only 11.7% of farmworker men surveyed report they have had a digital rectal exam.

KS BRFSS 2004- 68.8% of adult male Kansans have had a digital rectal exam whereas 11.7% of male farmworkers surveyed report having a digital rectal exam.

35. How long has it been since your last digital rectal exam?

RESPONSES	ALL	ENGLISH	LOWGERMAN	SPANISH
Within the past year (anytime less than 12 months ago)	48.3%	50.0%	42.9%	50.0%
Within the past 2 years (1 year but less than 2 years ago)	24.1%	33.3%	28.5%	18.8%
Within the past 5 years (2 years but less than five years)	7.0%	.0%	14.3%	6.2%
5 or more years	10.3%	16.7%	.0%	12.5%
Never	10.3%	.0%	14.3%	12.5%

Among all respondents, excluding unknowns and refusals

DISCUSSION

Of those farmworker men who report having a digital rectal exam, almost half had one in the past 12 months.

KS BRFSS 2006- 54.6% of adult male Kansans have had a digital rectal exam in the last 12 months whereas 48.3% of male farmworkers surveyed report a digital rectal exam in the last 12 months.

Quality of Life-Core

36. Are you limited in any way in any activities because of physical, mental, or emotional problems?

RESPONSES	ALL	ENGLISH	LOWGERMAN	SPANISH
Yes	6.7%	19.4%	4.9%	7.1%
No	93.3%	80.6%	95.1%	92.9%

RESPONSES	ALL		ENGLISH		LOWGERMAN		SPANISH	
	Male	Female	Male	Female	Male	Female	Male	Female
Yes	6.4%	7.1%	17.6%	21.4%	3.2%	6.3%	7.8%	6.4%
No	93.6%	92.9%	82.4%	78.6%	96.8%	93.7%	92.2%	93.6%

Among all respondents, excluding unknowns and refusals

DISCUSSION

Significant differences between cultural/linguistic groups were found among surveyed farmworkers response to limitations in activities. Almost twenty percent of ES farmworkers report they have limitations with a much lower percent in SS at 7.7% and 4.9% in LGS farmworkers.

KS BRFSS 2006- 18.9% of adult Kansas are limited in activities because of physical, mental or emotional problems whereas 6.7% of farmworkers surveyed report they are limited in activities because of physical, mental or emotional problems.

37. What is the MAJOR impairment or health problem that limits your activities?

RESPONSES	ALL	ENGLISH	LOWGERMAN	SPANISH
Arthritis or rheumatism	10.4%	.0%	20.0%	10.5%
Back or neck problems	13.8%	20.0%	20.0%	10.5%
Fractures, bone or joint injury	3.4%	.0%	.0%	2.3%
Walking problem	13.8%	.0%	20.0%	15.8%
Lung or breathing problem	3.4%	20.0%	.0%	.0%
Hearing problem	.0%	.0%	.0%	.0%
Eye/vision problem	.0%	.0%	.0%	.0%
Heart problem	6.9%	20.0%	20.0%	.0%
Stroke problem	.0%	.0%	.0%	.0%
Hypertension or high blood pressure	13.8%	.0%	20.0%	15.8%
Diabetes	20.7%	20.0%	.0%	26.3%
Cancer	.0%	.0%	.0%	.0%
Depression, anxiety or emotional problem	.0%	.0%	.0%	.0%
Other impair or problem	13.8%	20.0%	.0%	15.8%

RESPONSES	ALL		ENGLISH		LOWGERMAN		SPANISH	
	Male	Female	Male	Female	Male	Female	Male	Female
Arthritis or rheumatism	0%	18.8%	0%	0%	0%	25%	0%	22.2%
Back or neck problems	23.1%	6.3%	50%	0%	100%	0%	10%	11.1%
Fractures, bone or joint injury	7.7%	0%	0%	0%	0%	0%	10%	11.1%
Walking problem	23.1%	6.3%	0%	0%	0%	25%	20%	0%
Lung or breathing problem	0%	6.3%	0%	33.3%	0%	0%	0%	0%
Hearing problem	0%	0%	0%	0%	0%	0%	0%	0%
Eye/vision problem	0%	0%	0%	0%	0%	0%	0%	0%
Heart problem	0%	12.5%	0%	33.3%	0%	25%	0%	0%
Stroke problem	0%	0%	0%	0%	0%	0%	0%	0%
Hypertension or high blood pressure	15.4%	12.5%	0%	0%	0%	25%	20%	11.1%
Diabetes	15.4%	25%	50%	0%	0%	0%	10%	44.4%
Cancer	0%	0%	0%	0%	0%	0%	0%	0%
Depression, anxiety or emotional problem	0%	0%	0%	0%	0%	0%	0%	0%
Other impairment or problem	15.4%	12.5%	0%	33.3%	0%	0%	20%	11.1%

Among all respondents, excluding unknowns and refusals

DISCUSSION

Surveyed farmworkers report the most common conditions impacting activities are diabetes (20.7%), hypertension/high blood pressure (13.8%), back or neck problems (13.8%), walking problems (13.8%), other (13.8%) and then arthritis/rheumatism (10.4%) and then heart problems (6.9%).

38. During the past 30 days, for about how many days have you felt SAD, BLUE, or DEPRESSED?

RESPONSES	ALL	ENGLISH	LOWGERMAN	SPANISH
30 days	1.0%	.0%	1.3%	.7%
14 to 28 days	3.5%	3.2%	3.5%	3.6%
7 to 12 days	3.3%	.0%	3.9%	3.2%
1 to 6 days	25.8%	25.8%	23.6%	27.6%
None	66.4%	71.0%	67.7%	64.9%

RESPONSES	ALL		ENGLISH		LOWGERMAN		SPANISH	
	Male	Female	Male	Female	Male	Female	Male	Female
30 days	1.1%	.7%	0%	0%	.9%	1.7%	1.4%	0%
14 to 28 days	2.2%	4.8%	0%	7.1%	2.7%	4.3%	2.1%	5%
7 to 12 days	1.5%	5.2%	0%	0%	.9%	6.8%	2.1%	4.3%
1 to 6 days	22%	29.2%	17.6%	35.7%	9.9%	36.4%	33%	22.3%
None	72.8%	60.1%	82.4%	57.1%	85.6%	50.8%	61.4%	68.3%

Among all respondents, excluding unknowns and refusals

DISCUSSION

Approximately 15% of LGS farmworkers surveyed report they either don't know or aren't sure about this questions. Of those that did answer, approximately 4.5% of farmworkers report they are sad, blue or depressed for 14 or more days of the month. Females are more likely in every cultural/linguistic group than males to report they are sad, blue or depressed for 14 or more days of the month.

KS BRFSS 2001- 7.6% of adult Kansans are sad, blue or depressed for 14 or more days of the month whereas 4.5% of farmworkers surveyed report they are sad, blue or depressed for 14 or more days of the month.

39. During the past 30 days, for about how many days have you felt WORRIED, TENSE, or ANXIOUS?

RESPONSES	ALL	ENGLISH	LOWGERMAN	SPANISH
30 days	1.5%	.0%	1.4%	1.8%
14 to 28 days	3.6%	6.5%	1.8%	4.6%
7 to 12 days	4.1%	3.1%	3.2%	5.0%
1 to 6 days	26.5%	31.3%	20.5%	30.7%
None	64.3%	59.4%	73.2%	57.9%

RESPONSES	ALL		ENGLISH		LOWGERMAN		SPANISH	
	Male	Female	Male	Female	Male	Female	Male	Female
30 days	2.2%	.8%	0%	0%	.9%	1.7%	3.6%	0
14 to 28 days	3.4%	3.8%	5.6%	7.1%	.9%	4.2%	5%	4.2%
7 to 12 days	2.6%	5.7%	0%	7.1%	1.8%	6.8%	3.5%	6.4%
1 to 6 days	27.5%	25.5%	27.7%	35.7%	11.7%	36.4%	40%	21.4%
None	64.3%	64.3%	66.7%	50.1%	84.7%	50.9%	47.9%	68%

Among all respondents, excluding unknowns and refusals

DISCUSSION

Approximately 15% of LGS farmworkers surveyed report they either didn't know or aren't sure about this question. Of those that did answer, approximately 5.1% of farmworkers report they are worried, tense or anxious for 14 or more days of the month.

KS BRFSS 2001- 15.6% of adult Kansans are worried, tense or anxious for at least 14 or more days whereas 5.1% of surveyed farmworkers report they are worried, tense or anxious for 14 or more days of the month.

40. During the past 30 days, for about how many days have you felt VERY HEALTHY and FULL OF ENERGY?

RESPONSES	ALL	ENGLISH	LOWGERMAN	SPANISH
30 days	49.2%	32.1%	51.2%	48.7%
14 to 28 days	34.6%	39.3%	30.2%	37.5%
7 to 12 days	3.1%	3.6%	3.3%	2.9%
1 to 6 days	5.4%	7.1%	2.3%	7.6%
None	7.7%	32.1%	13.0%	3.3%

RESPONSES	ALL		ENGLISH		LOWGERMAN		SPANISH	
	Male	Female	Male	Female	Male	Female	Male	Female
30 days	51.1%	47.3%	50%	30%	50.5%	51.9%	51.8%	51.4%
14 to 28 days	33%	36.3%	33.3%	40%	34.9%	25.5%	31.4%	37.9#
7 to 12 days	4.6%	1.6%	5.6%	0%	4.6%	1.9%	4.4%	1.4%
1 to 6 days	4.5%	6.4%	0%	20%	.9%	3.8%	8%	6.4%
None	6.8%	9.6%	11.1%	10%	9.2%	17%	4.4%	2.1%

Among all respondents, excluding unknowns and refusals

DISCUSSION

Approximately 20% of surveyed LGS farmworkers report they either don't know or aren't sure about this question. Of those that did respond, 83.8% felt very health and full of energy for 14 days or more. About 71.4% of ES farmworkers felt very healthy and full of energy while 81.4% of LGS and 86.2% of SS

farmworkers felt this for 14 days or more of the month. LGS and ES females are the groups most likely to never feel or rarely feel very healthy and full of energy.

KS BRFSS 2001- 74.2% of adult Kansans have felt very healthy and full of energy for 14 days or more whereas 83.8% of surveyed farmworkers report they felt very healthy and full of energy for 14 days or more of the month.

Cholesterol Awareness

41. Blood cholesterol is a fatty substance found in the blood. Have you ever had your blood cholesterol checked?

RESPONSES	ALL	ENGLISH	LOWGERMAN	SPANISH
Yes	46.0%	72.7%	63.7%	26.4%
No	54.0%	27.3%	36.3%	73.6%

RESPONSES	ALL		ENGLISH		LOWGERMAN		SPANISH	
	Male	Female	Male	Female	Male	Female	Male	Female
Yes	35%	56.9%	61.1%	86.7%	48.3%	77.3%	20.7%	32.6%
No	65%	43.1%	38.9%	13.3%	51.7%	22.7%	79.3%	67.4%

Among all respondents, excluding unknowns and refusals

DISCUSSION

Less than fifty percent of surveyed farmworkers report they have had a blood cholesterol check. Females are more likely than males to have had this check with ES farmworkers the most likely at 72.7% then LGS at 63.7% and then SS farmworkers at 26.4% to have had this check.

KS BRFSS 2009- 78.5% of adult Kansans have had no blood cholesterol check whereas 46% of surveyed farmworkers have not had a blood cholesterol check.

42. About how long has it been since you last had your blood cholesterol checked?

RESPONSES	ALL	ENGLISH	LOWGERMAN	SPANISH
Within the past year (anytime less than 12 months ago)	70.2%	91.7%	66.9%	70.0%
Within the past 2 years (1 year but less than 2 years ago)	10.9%	4.2%	8.4%	18.6%
Within the past 5 years (2 years but less than five years)	13.7%	7.2%	18.8%	5.7%
5 or more years	5.2%	.0%	5.8%	5.7%

RESPONSES	ALL		ENGLISH		LOWGERMAN		SPANISH	
	Male	Female	Male	Female	Male	Female	Male	Female
Within the past year (anytime less than 12 months ago)	57.9%	77.8%	100%	84.6%	51.8%	75.5%	53.6%	81%
Within the past 2 years (1 year but less than 2 years ago)	12.6%	9.8%	0%	7.7%	10.7%	7.1%	21.4%	16.7%
Within the past 5 years (2 years but less than five years)	20%	9.8%	0%	7.7%	28.6%	13.3%	10.7%	2.4%
5 or more years	9.5%	2.6%	0%	0%	8.9%	4.1%	14.3%	0%

Among all respondents, excluding unknowns and refusals

DISCUSSION

Of those farmworkers surveyed that have had the cholesterol check, 70.2% have had it within the last 12 months with 91.7% of ES farmworkers, 66.9% of LGS and 80% of SS farmworkers having the cholesterol check within 12 months.

KS BRFSS 2009- 4.2% of adult Kansans have had a cholesterol check in the last 12 months whereas 5.2% of surveyed farmworkers have had a cholesterol check in the last 12 months.

43. Have you ever been told by a doctor or other health professional that your blood cholesterol is high?

RESPONSES	ALL	ENGLISH	LOWGERMAN	SPANISH
Yes	18.8%	20.8%	12.8%	31.4%
No	81.2%	49.2%	87.2%	68.6%

RESPONSES	ALL		ENGLISH		LOWGERMAN		SPANISH	
	Male	Female	Male	Female	Male	Female	Male	Female
Yes	27.7%	13.5%	9.1%	30.8%	21.8%	7.9%	46.4%	21.4%
No	72.3%	86.5%	90.9%	69.2%	78.2%	92.1%	53.6%	78.6%

Among all respondents, excluding unknowns and refusals

DISCUSSION

Farmworker survey response show SS farmworkers are most likely to have had a health professional tell them their blood cholesterol is high at 31.4% compared to 20.8% of ES and 12.8% of LGS farmworkers having been told the same.

KS BRFSS 2009- 38.6% of adult Kansans have been told they have high cholesterol whereas 18.8% of surveyed farmworkers have been told the same.

Hypertension Awareness

44. About how long has it been since you last had your blood pressure taken by a doctor, nurse, or other health professional?

RESPONSES	ALL	ENGLISH	LOWGERMAN	SPANISH
Within the past year (anytime less than 12 months ago)	72.6%	74.2%	83.2%	62.4%
Within the past 2 years (1 year but less than 2 years ago)	9.5%	9.6%	5.2%	13.5%
Within the past 5 years (2 years but less than five years)	7.1%	6.5%	6.4%	7.9%
5 or more years	4.0%	6.5%	3.2%	4.5%
Never	6.8%	3.2%	2.0%	11.7%

RESPONSES	ALL		ENGLISH		LOWGERMAN		SPANISH	
	Male	Female	Male	Female	Male	Female	Male	Female
Within the past year (anytime less than 12 months ago)	71.4%	73.6%	70.6%	78.6%	77.6%	87.5%	66.4%	58.7%
Within the past 2 years (1 year but less than 2 years ago)	6%	12.5%	11.7%	7.1%	7.5%	3.5%	.9%	22.5%
Within the past 5 years (2 years but less than five years)	10.3%	4.4%	5.9%	7.1%	7.5%	5.6%	13.3%	2.9%
5 or more years	6.7%	1.7%	5.9%	7.1%	3.7%	2.8%	9.4%	0%
Never	5.6%	7.8%	5.9%	0%	3.7%	.7%	7.0%	15.9%

Among all respondents, excluding unknowns and refusals

DISCUSSION

Approximately 72.6% of surveyed farmworkers have had their blood pressure taken in the last 12 months with 83.2% of LGS, 74.2% of ES and 62.4% of SS farmworkers having had it taken in this same period of time.

KS BRFSS 1999- 88.8% of adult Kansans have had their blood pressure taken in the last 12 months but .05% of adult Kansans have never had it taken whereas 72.6% of surveyed farmworkers have had their blood pressure taken with 6.8% of farmworkers never having it taken.

45. Have you ever been told by a doctor, nurse, or other health professional that you have high blood pressure?

RESPONSES	ALL	ENGLISH	LOWGERMAN	SPANISH
Yes	13.2%	28.1%	10.9%	13.8%
No	86.8%	71.9%	89.1%	86.2%

RESPONSES	ALL		ENGLISH		LOWGERMAN		SPANISH	
	Male	Female	Male	Female	Male	Female	Male	Female
Yes	12.6%	13.8%	29.4%	26.7%	11.2%	10.6%	11.6%	16.1%
No	87.4%	86.2%	70.6%	73.3%	88.8%	89.4%	88.4%	83.9%

Among all respondents, excluding unknowns and refusals

DISCUSSION

Approximately 13.2% of surveyed farmworkers report they have been told they have high blood pressure, with 28.1% of ES farmworkers 13.8% of SS farmworkers and 10.9% of LGS farmworkers.

KS BRFSS 2009- 28.7% of adult Kansans have been told they have high blood pressures whereas 13.2% of surveyed farmworkers report they have been told they have high blood pressure.

46. Are you currently taking medicine for your high blood pressure?

RESPONSES	ALL	ENGLISH	LOWGERMAN	SPANISH
Yes	61.4%	88.9%	74.1%	44.1%
No	38.6%	11.1%	25.9%	55.9%

RESPONSES	ALL		ENGLISH		LOWGERMAN		SPANISH	
	Male	Female	Male	Female	Male	Female	Male	Female
Yes	62.5%	60.5%	80%	100%	83.3%	66.7%	40%	47.4%
No	37.5%	39.5%	20%	0%	16.7%	33.3%	60%	52.6%

Among all respondents, excluding unknowns and refusals

DISCUSSION

Of those surveyed farmworkers with high blood pressure, 61.4% report they currently take medication for the condition. ES farmworkers are most likely to take medication at 88.9% with 74.1% of LGS and 44.1% of SS workers.

KS BRFSS 2009- 80.2% of adult Kansans are currently taking medication for the condition whereas 61.4% of farmworkers surveyed report they currently take medication for the condition.

Demographics-Core

- 47. About how much do you weigh without shoes?
- 48. About how tall are you without shoes?

BODY MASS INDEX

RESPONSES	ALL	ENGLISH	LOWGERMAN	SPANISH
Below Normal	1.6%	3.1%	1.9%	1.2%
Normal	25%	37.5%	27.3%	21.2%
Overweight	37.9%	31.3%	34.5%	42.4%
Obese	30.7%	18.8%	29.9%	32.9%
Extreme Obesity	4.8%	9.4%	6.5%	2.4%

RESPONSES	ALL		ENGLISH		LOWGERMAN		SPANISH	
	Male	Female	Male	Female	Male	Female	Male	Female
Below Normal	.8%	2.4%	0%	7.1%	.8%	2.8%	.9%	1.4%
Normal	29.9%	20.9%	33.3%	42.9%	33.6%	22.1%	25.6%	17.4%
Overweight	46.1%	31%	38.9%	21.4%	43.7%	26.9%	49.6%	36.2%
Obese	20.5%	39.4%	16.7%	21.4%	18.5%	39.3%	23.1%	41.3%
Extreme Obesity	2.8%	6.4%	11.1%	7.1%	3.4%	9%	.9%	3.6%

Among all respondents, excluding unknowns and refusals

DISCUSSION

Approximately 35.5% of surveyed farmworkers are obese or extremely obese. The groups most likely to fall into this category are LGS and SS females.

KS BRFSS 2006- 62.3% of Adult Kansans are overweight or obese whereas 73.4% of farmworkers surveyed are overweight or obese.

Immunizations

49. A flu shot is an influenza vaccine injected in your arm. During the past 12 months, have you had a flu shot?

RESPONSES	ALL	ENGLISH	LOWGERMAN	SPANISH
Yes	31.3%	30.3%	36.3%	27.0%
No	68.7%	69.7%	63.7%	73.0%

RESPONSES	ALL		ENGLISH		LOWGERMAN		SPANISH	
	Male	Female	Male	Female	Male	Female	Male	Female
Yes	21.9%	40%	33.3%	26.7%	29.5%	42.1%	13.7%	39.3%
No	78.1%	60%	66.7%	73.3%	70.5%	57.9%	86.3%	60.7%

Among all respondents, excluding unknowns and refusals

DISCUSSION

Only around one third of farmworkers surveyed report having had an influenza vaccine in the past 12 months. Females are more likely than males to have received the vaccine.

KS BRFSS 2009- 41.1% of adult Kansans have had the influenza vaccine in the past 12 months whereas 31.3% of farmworkers surveyed report they have had the influenza vaccine in the past 12 months.

50. A pneumonia shot or pneumococcal vaccine is usually given only once or twice in a person's lifetime and is different from the flu shot. Have you ever had a pneumonia shot?

RESPONSES	ALL	ENGLISH	LOWGERMAN	SPANISH
Yes	6.3%	27.3%	3.0%	7.0%
No	93.7%	72.7%	97.0%	93.0%

RESPONSES	ALL		ENGLISH		LOWGERMAN		SPANISH	
	Male	Female	Male	Female	Male	Female	Male	Female
Yes	6.6%	6%	22.2%	33.3%	2.5%	3.5%	8.7%	5.7%
No	93.4%	94%	77.8%	66.7%	97.5%	96.5%	91.3%	94.3%

Among all respondents, excluding unknowns and refusals

DISCUSSION

Only 6.3% of surveyed farmworkers report having a pneumonia vaccine (3.3% of adult farmworkers registered are 65 years of age or over UDS 2009).

KS BRFSS 2009- 25.7% of adult Kansans have had a pneumonia vaccine whereas 6.3% of surveyed farmworkers report having had a pneumonia vaccine.

CONSIDERATIONS

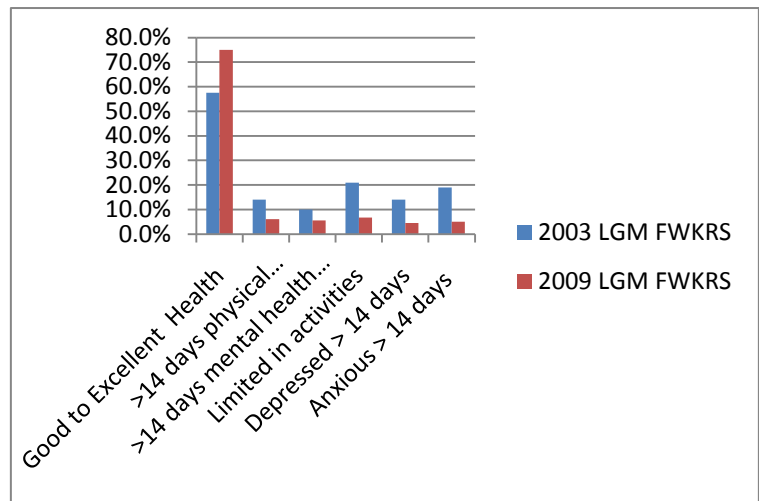
In thinking about the data the following should be considered:

- The sample size of the cultural/linguistic English group is very small, especially compared to the other two groups.
- “Don’t know” and “not sure” responses were significant on some questions and suggest either a lack of awareness of or comfort level with the question content.
- The Kansas farmworker population is a very young population with 79% between the ages of 18 and 45 years in 2009.
- Significant differences exist between health status and access to care for farmworkers.
- Female farmworkers are much more likely to access health care than males, particularly for preventive care.
- The cultural/linguistic Spanish group has been in the United States for fewer years than the Low German group.
- In 2009, farmworkers registered were 45% migrant and 55% seasonal and survey responses may reflect seasonal farmworkers to a greater extent than migrant farmworkers.
- Until 2009, KSFHP health promoters served only Low German/English farmworkers.

2003 KSFHP HEALTH SURVEY

In 2003 KSFHP interviewed a total of 114 farmworkers, only about 4% of the adult population that year. The Low German farmworkers (27) were interviewed in person while the Spanish farmworkers (87) were interviewed by telephone. Comparison between the two surveys should be made with caution due to the limited numbers of farmworkers surveyed in 2003.

Survey reported results	2003 LGM FWKRS	2009 LGM FWKRS
Good to Excellent Health	57.5%	75.0%
>14 days physical health not good	14.0%	6.1%
>14 days mental health not good	10.0%	5.6%
Limited in activities	21.0%	6.7%
Depressed > 14 days	14.0%	4.5%
Anxious > 14 days	19.0%	5.1%



Survey reported results	2003 LGM FWKRS	2009 LGM FWKRS
Couldn't get needed care	13.0%	8.6%
Reason cost	91.0%	72.0%
No Routine Health Visit	9.0%	11.6%
No dental visit	2.0%	7.9%
Teeth cleaned last 12 months	22.0%	38.7%
No Family Planning	27.0%	34.4%
Had Pap Smear	97.0%	93.9%

