

FOR IMMEDIATE RELEASE

Aug. 3, 2017

Contact: Matt Keith, KDHE
(785) 296-5795
Matt.Keith@ks.gov

Ron Kaufman, KDWPT
(785) 296-2870
ron.kaufman@ks.gov

Six lakes under public health warning due to blue-green algae

TOPEKA, Kan. – The Kansas Department of Health and Environment (KDHE), in conjunction with the Kansas Department of Wildlife Parks and Tourism (KDWPT), has issued a public health warning for six lakes and a watch for five lakes due to harmful algal blooms.

Zone C of Milford Reservoir is under a warning for blue-green algae. Zone A is in watch status. Please see the end of this news release for a map of the lake's zones.

If a lake is under a public health warning for blue-green algae, activities such as boating and fishing may be safe. However, direct contact with water (i.e., wading, skiing and swimming) is strongly discouraged for people, pets and livestock. The lakes currently under a watch or warning status are:

- **Warning:** Marion County Lake, Marion County
- **Warning:** Marion Reservoir, Marion County
- **Warning:** Melvern Outlet River Pond, Osage County
- **Warning:** Melvern Outlet Swim Pond, Osage County
- **Warning:** Milford Reservoir (Zone C), Geary, Dickinson and Clay counties
- **Warning:** Webster Lake, Rooks County
- **Watch:** Milford Reservoir (Zone A), Geary, Dickinson and Clay counties
- **Watch:** Overbrook City Lake, Osage County
- **Watch:** Sam's Pond, Syracuse, Hamilton County
- **Watch:** South Lake, Johnson County
- **Watch:** Villa High Lake, Thomas County

Lakes under a warning are not closed. Marinas, lakeside businesses and park camping facilities are open for business. If swim beaches are closed, it will be specifically noted. Drinking water and showers at parks are safe and not affected by algae blooms. Boating and fishing are safe on lakes under a warning, but contact with the water should be avoided. It is safe to eat fish caught during a harmful blue-green algae outbreak, as long as the fish is rinsed with clean water. Only the fillet portion should be consumed, and all other parts should be discarded. Hands should also be washed with clean water after handling fish taken from an affected lake. Zoned lakes may have portions fully open for all recreation even if other portions are under a warning.

Kansans should be aware that blooms are unpredictable. They can develop rapidly and may float around the lake, requiring visitors to exercise their best judgment. If there is scum, a paint-like surface or the water is bright green, avoid contact and keep pets away. These are indications that a harmful bloom may be present. Pet owners should be aware that animals that swim in or drink water affected by a harmful algal bloom or eat dried algae along the shore may become seriously ill or die.

When a warning is issued, KDHE recommends the following precautions be taken:

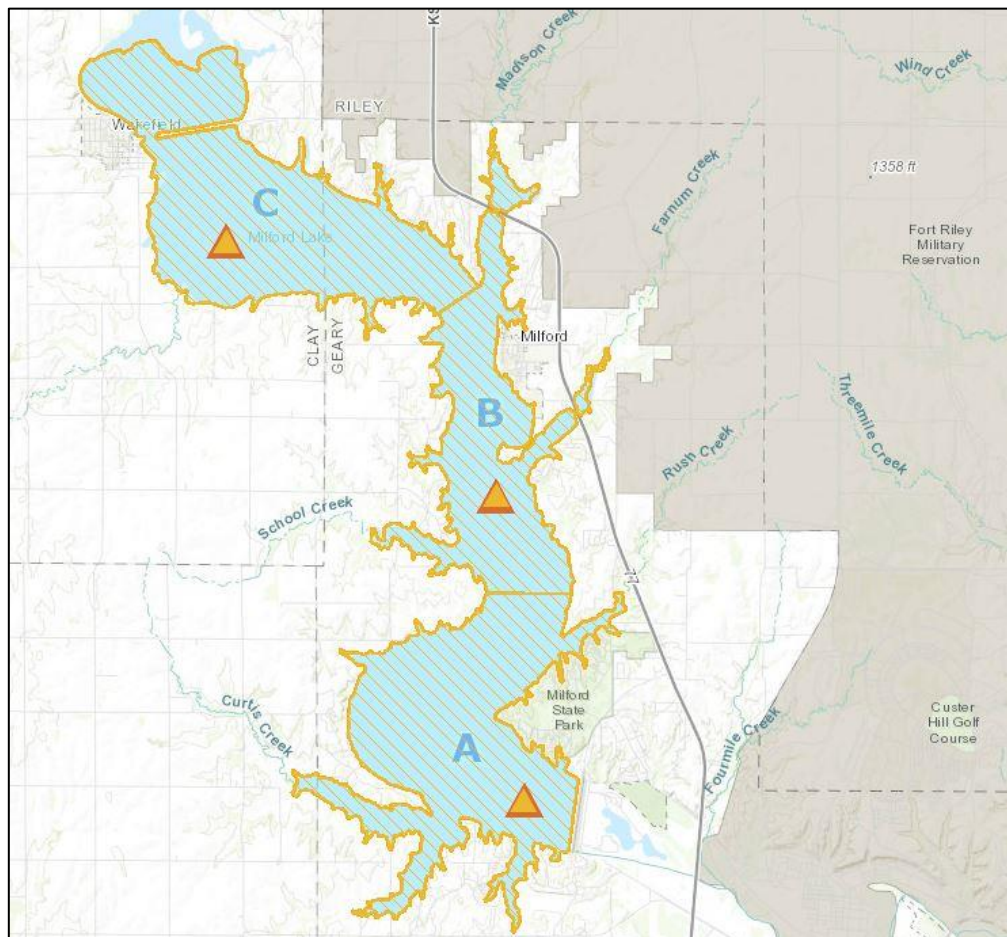
- Lake water is not safe to drink for pets or livestock.
- Lake water, regardless of blue-green algae status, should never be consumed by humans.
- Water contact should be avoided.
- Fish may be eaten as long as they are rinsed with clean water and only the fillet portion is consumed, while all other parts are discarded.
- Do not allow pets to eat dried algae.
- If lake water contacts skin, wash with clean water as soon as possible.
- Avoid areas of visible algae accumulation.

KDHE samples publicly accessible bodies of water for blue-green algae when the agency receives reports of potential algae blooms in Kansas lakes. Based on sampling results, KDHE reports on potentially harmful conditions.

For information on blue-green algae and reporting potential harmful algal blooms, please visit www.kdheks.gov/algae-illness/index.htm.

###

KDHE's mission is to protect and improve the health and environment of all Kansans.



Milford Lake Zones