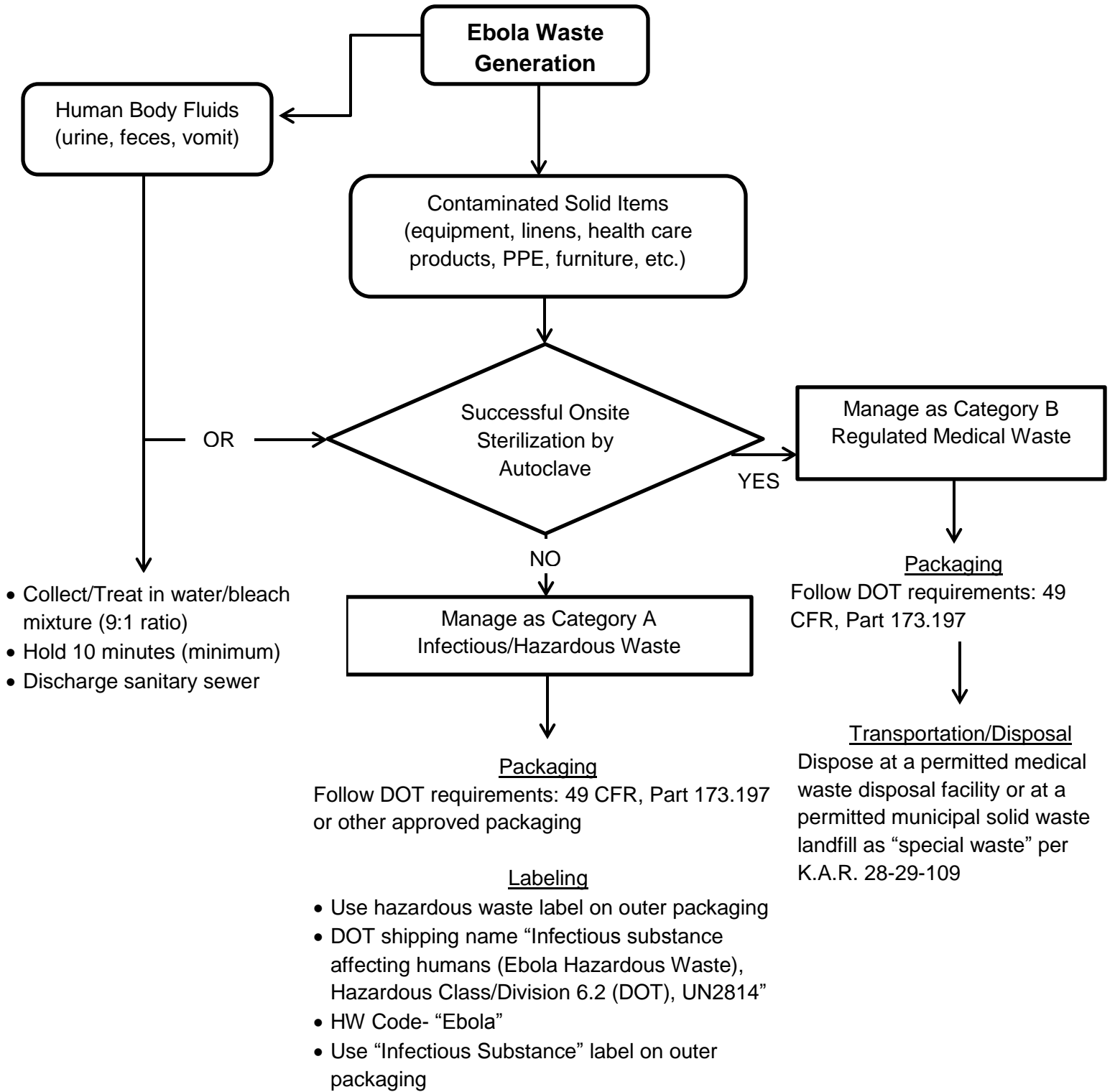


# Ebola Waste Management in Kansas



- Collect/Treat in water/bleach mixture (9:1 ratio)
- Hold 10 minutes (minimum)
- Discharge sanitary sewer

Follow DOT requirements: 49 CFR, Part 173.197 or other approved packaging

### Labeling

- Use hazardous waste label on outer packaging
- DOT shipping name "Infectious substance affecting humans (Ebola Hazardous Waste), Hazardous Class/Division 6.2 (DOT), UN2814"
- HW Code- "Ebola"
- Use "Infectious Substance" label on outer packaging

### Storage

Secure location up to 90 days

### Transportation/Disposal\*

- Use uniform HW manifest
- Use registered HW transporter
- Use permitted HW facility for incineration

**\*Contact KDHE for assistance**



Oct. 27, 2014