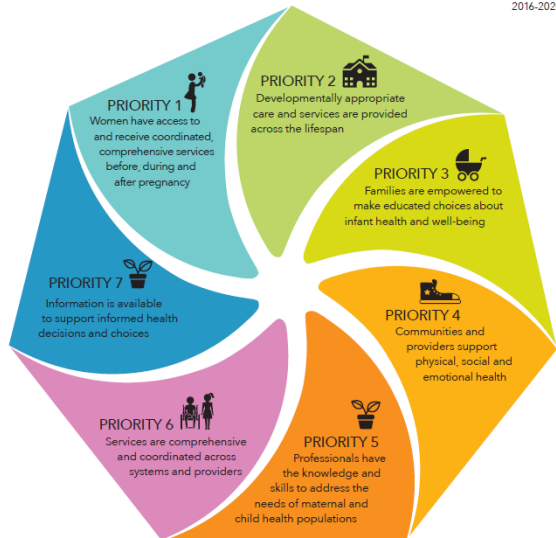


**KANSAS TITLE V MATERNAL & CHILD HEALTH  
MATERNAL & CHILD HEALTH | 5-YEAR STATE ACTION PLAN**  
2016-2020



**Innovative, Comprehensive Approach**  
Community Collaboration  
Prenatal Education, Care and Support  
Targeted Evidence-based Interventions/Toolkits  
Shared Measurement and Evaluation

### Kansas Model

The Kansas model brings together prenatal care, education and support in a collaborative, standardized approach. Primary components include 12 hours of comprehensive education, clinical care, public health cross-referrals and other priority services/supports.



### Kansas Measures Snapshot – 2017<sup>1</sup>

**36,464 Total Live Births**

**Infant Mortality Rate**

6.0 per 1,000 live births

**Sudden Unexpected Infant Death Rate**

1.1 per 1,000 live births

**Preterm Birth Rate (<37 weeks)** 9.6%

**Early Term Birth Rate (37-38 weeks)** 25.6%

**Low Birthweight (<2,500 grams)** 7.4%

**Smoking Anytime During Pregnancy** 10.1%

**Breastfeeding Initiation** 88.5%

### Comparison: Collaboratives\* vs. State Outcomes

Infant Mortality Rate <sup>1</sup>	Geary Collaborative established* July 2012	Saline Collaborative established* Jan. 2010
2005-2008	11.9	9.0
2013-2017	5.7	5.5

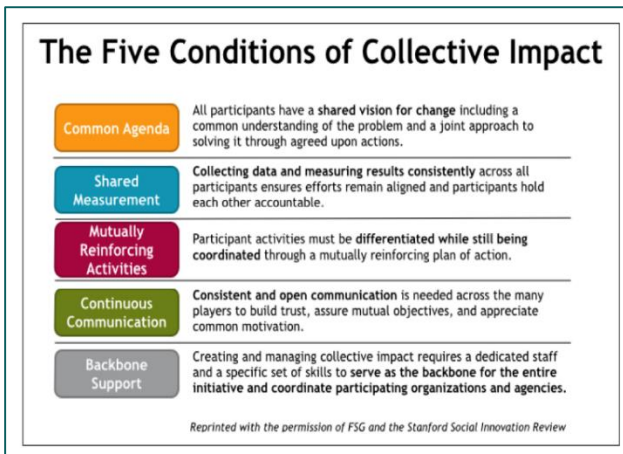
Preterm Birth Rate (<37 weeks)	All Community Collaboratives <sup>2,3</sup>	Kansas/State <sup>1</sup>
2015-2017 3 year avg.	8.5%	9.1%

Breastfeeding Initiation	All Community Collaboratives <sup>2,3</sup>	Kansas/State <sup>1</sup>
2015-2017 3 year avg.	93.5%	88.0%

\*Shared Measurement

### Collective Impact Framework is Key



### Universal Targeted Interventions & Toolkits

- Mental Health**
- Oral Health**
- Safe Sleep**
- Breastfeeding**
- Tobacco Cessation** – SCRIPT®, Baby & Me Tobacco Free®, KanQuit/Quitline
- Preterm Birth** – Prophylactic Progesterone, Low-Dose Aspirin, eliminate Early Elective Deliveries, One Key Question®, Long-Acting Reversible Contraception (LARC)
- SBIRT** - Screening, Brief Intervention, and Referral to Treatment